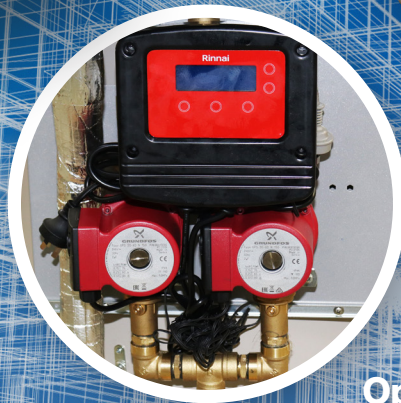


# Rinnai Demand Rapid

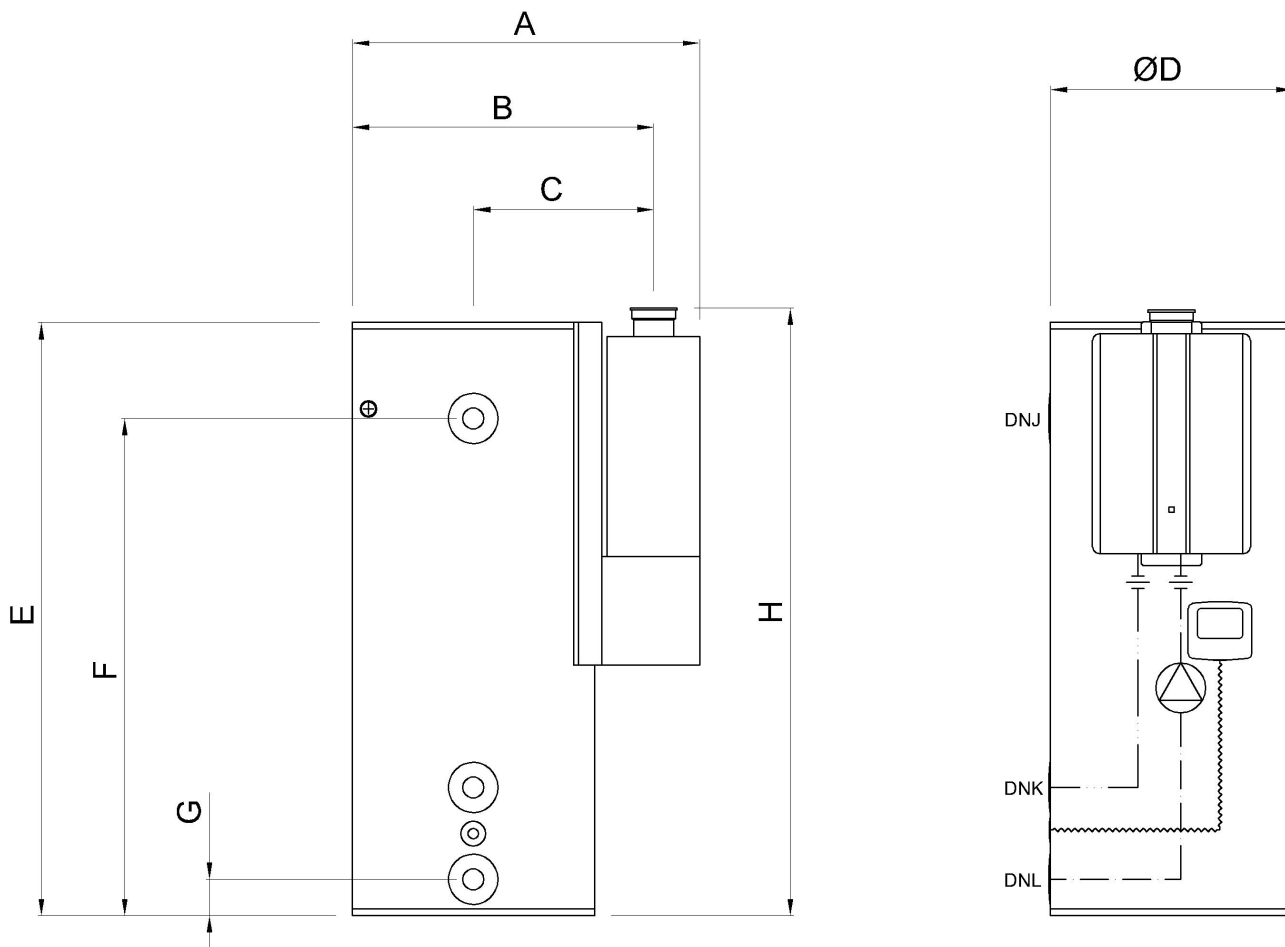
Commercial Hot Water Solutions



Optional Active/Standby Dual Pump

**Rinnai**

# Rinnai Demand Rapid Options



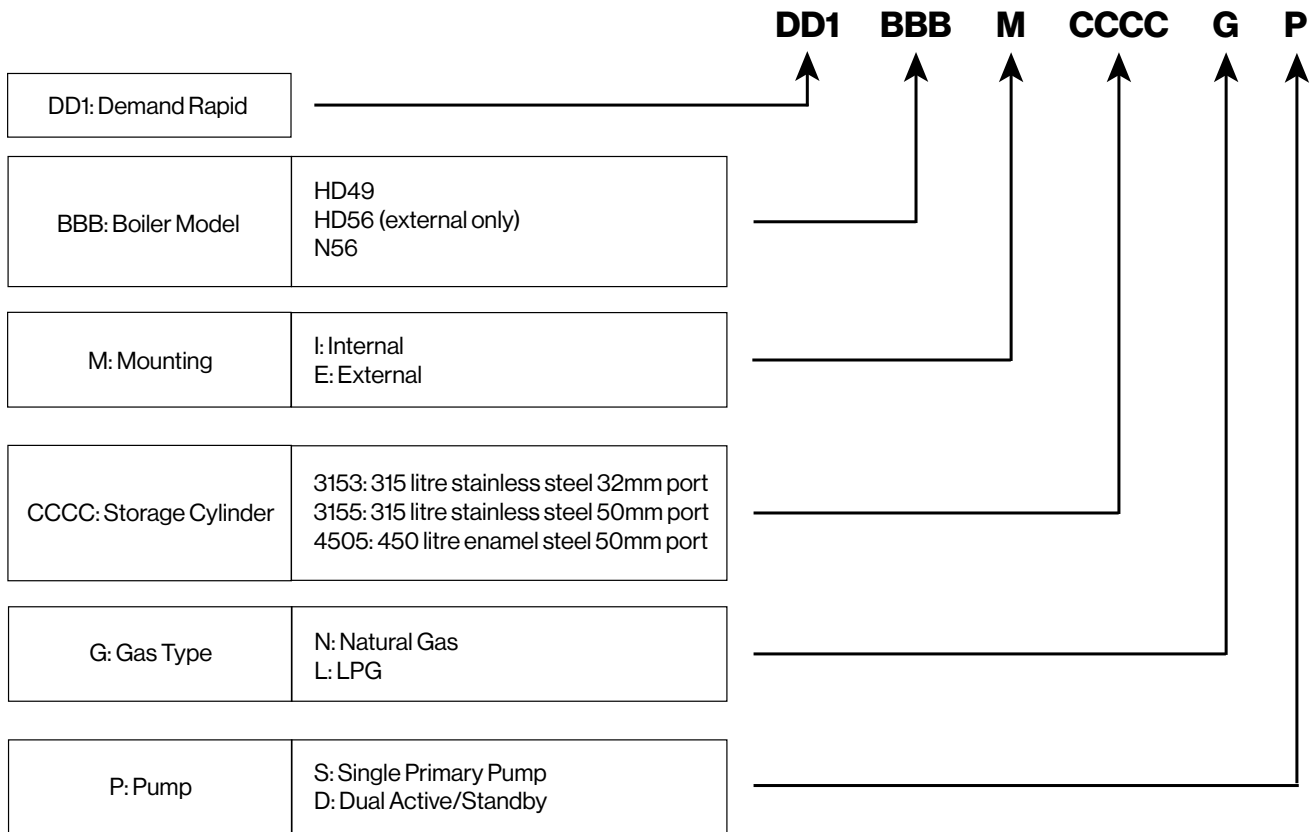
## Dimensions

	Overall Depth	Depth to flue C/L	Cylinder Dia.	Cylinder Height	Hot Outlet	Ring Main Return	Cold Inlet	Flue Outlet	Hot Outlet	Ring Main Return	Cold Inlet
	A	B	C	D	E	F	G	H	DNJ	DNK	DNL
<b>DD1*315</b>	879	742	600	2080	1855	385	285	2115	32 std 50 opt	32 std 50 opt	32 std 50 opt
<b>DD1*450</b>	1033	896	720	1763	1478	381	108	1800	50	50	50

## Specification Comparison

	Capacity (l)	Material	Weight empty (kg)	TPR Set Point (kPa)
<b>DD1*315</b>	320	444 Duplex Stainless	~95	850
<b>DD1*450</b>	450	Enamel Steel Dual 27mm Anodes	~145	1000

# Ordering Part Number Matrix



APPROXIMATE FIRST HOUR DELIVERY (litres per hour)				
Model	DD1HD49*315*	DD1HD56e315* DD1N56*315*	DD1HD49*450*	DD1HD56E450* DD1N56*450*
<b>Delivered Temp.</b>	Incoming 2 °C (Queenstown)			
<b>40</b>	1610	1770	1830	1980
<b>60</b>	1050	1160	1190	1300
	Incoming 5 °C (South Island / Central North Island)			
<b>40</b>	1720	1890	1950	2120
<b>60</b>	1090	1200	1240	1350
	Incoming 10 °C (Coastal North Island)			
<b>40</b>	1960	2160	2200	2400
<b>60</b>	1180	1300	1320	1440
	Incoming 15 °C (Auckland & Northland)			
<b>40</b>	2300	2540	2570	2810
<b>60</b>	1280	1410	1420	1560