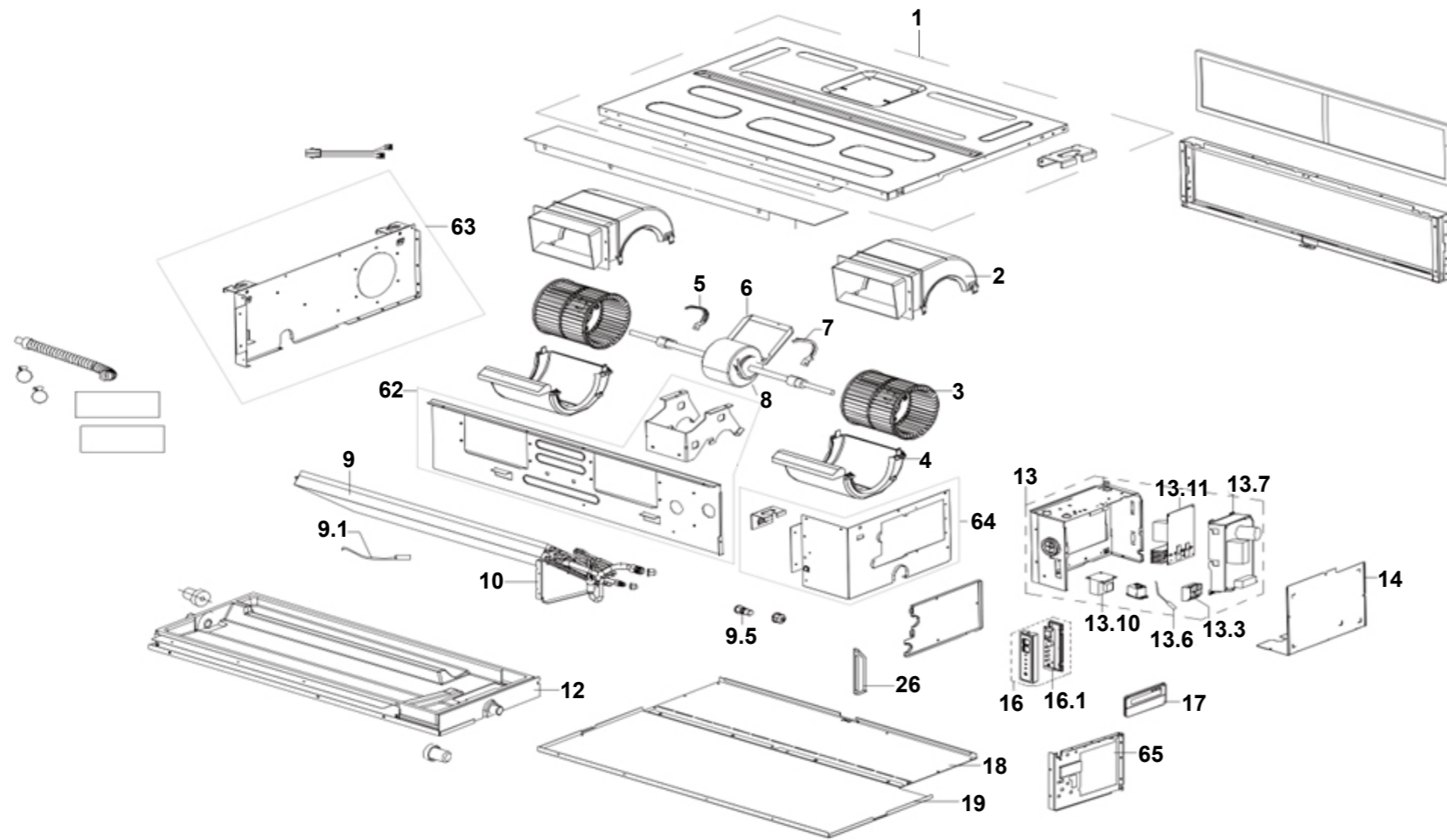


Pro Series R32 Ducted 9 kW indoor unit (DINLR09B1)

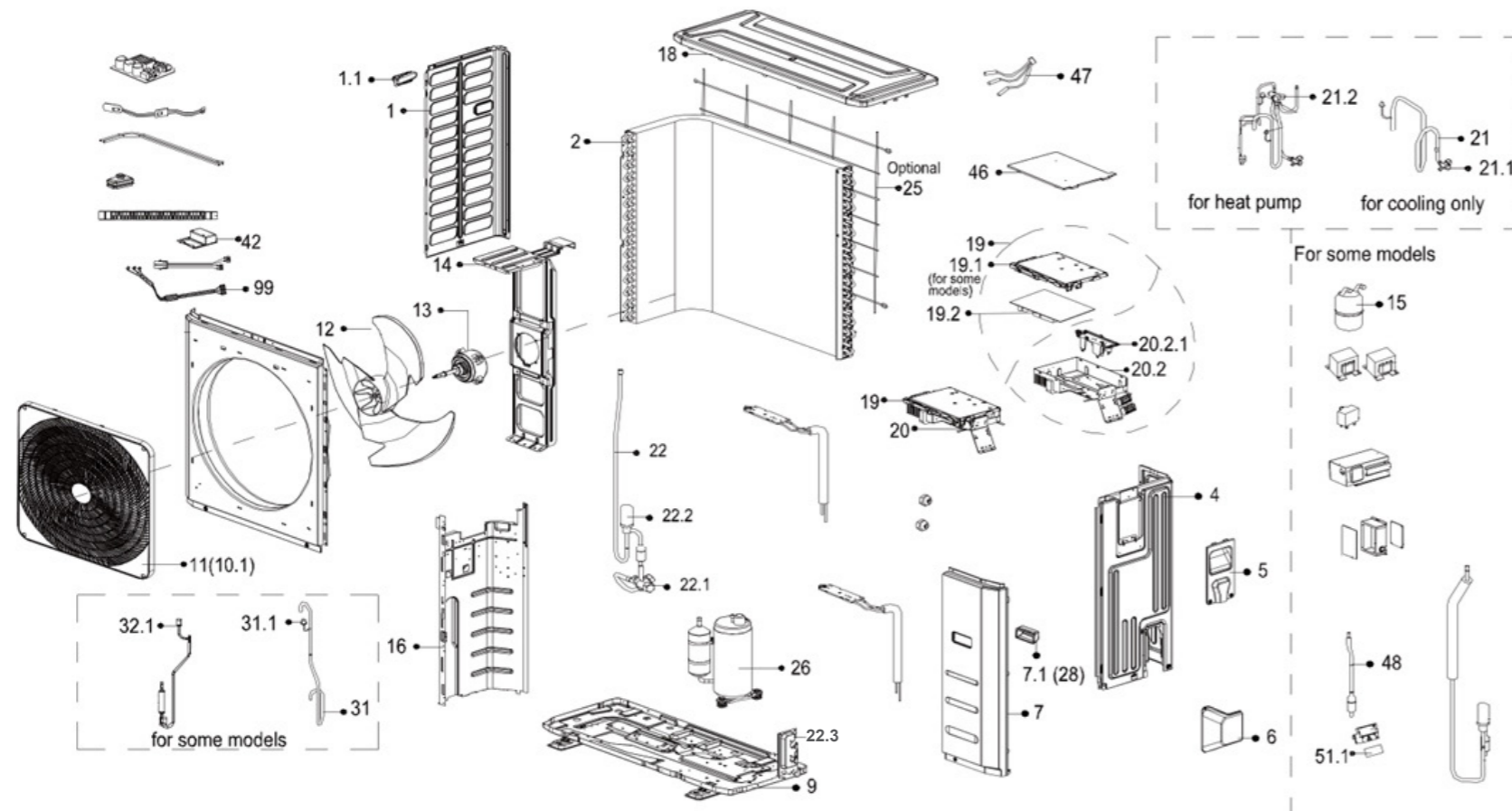
This diagram is provided to assist you to identify parts if replacement is necessary. Contact your place of purchase or the manufacturer to enquire about parts, availability and/or service.



Ref.	Description	Part No.
1	Chassis sub-assembly	
2	Top volute sub-assembly	
3	Fan scroll	
4	Bottom volute	
5	Fan motor axes clamp (left)	
6	Fan motor fixing board	
7	Fan motor axes clamp (right)	
8	Brushless DC motor	14198
9	Evaporator assembly	
9.1	Pipe temperature sensor	14156
9.5	Detection valve	
10	Evaporator right support board sub-assembly	
12	Water collector assembly	
13	Duct electronic control box sub-assembly	
13.3	Terminal	
13.6	Room temperature sensor	14157
13.7	Duct main control board sub-assembly	
13.10	Reactor	
13.11	Inverter control board sub-assembly	
14	Electronic control box cover	
16	Duct display board sub-assembly	84000085
16.1	Duct display board sub-assembly	
17	Wired controller	
18	Rear cover sub-assembly	
19	Top cover sub-assembly	
26	Right clapboard strengthen board	
60	Front beam sub-assembly	
62	Middle beam sub-assembly	
63	Left clapboard sub-assembly	
64	Right clapboard sub-assembly	
65	Right side plate	

Pro Series R32 Ducted 9 kW outdoor unit (DONSR09B1)

This diagram is provided to assist you to identify parts if replacement is necessary. Contact your place of purchase or the manufacturer to enquire about parts, availability and/or service.



Ref.	Description	Part No.
1	Left side plate assembly of cabinet	
1.1	Small handle	
2	Condenser assembly	
4	Rear right clapboard assembly	
5	Big handle assembly	
6	Water collector	
7	Front right clapboard assembly	
7.1	Handle	
9	Chassis assembly	
11	Air outlet grille	

Ref.	Description	Part No.
12	Axial flow fan	
13	Brushless DC motor	14149
14	Fan motor support sub-assembly	
15	Liquid storage tank	
16	Partition board assembly	
18	Top cover assembly	
19	Electronic control box sub-assembly	
19.1	Electronic control box cover	
19.2	Outdoor main control board sub-assembly	
20	Terminal board sub-assembly	14205
20.1	Terminal	
20.2	Electronic installing box sub-assembly	
21	4-way valve assembly	
21.1	Gas valve	
21.2	4-way valve	
22	Liquid valve assembly	
22.1	Liquid valve	
22.3	Valve plate	
25	Rear net	
26	DC inverter rotary compressor	
31	Suction pipe assembly	
31.1	Pressure switch	
32.1	Pressure switch	
42	DR module box sub-assembly	
46	Electronic control box cover	
47	Combination sensor	14129
48	Throttle valve sub-assembly	
51	Key board box sub-assembly (not shown)	
51.1	Key board sub-assembly	
99	Compressor wire sub-assembly	