

MECS

MSB-C1, MSB-C2, MSB-C3

Manifold electronic control system (MECS)

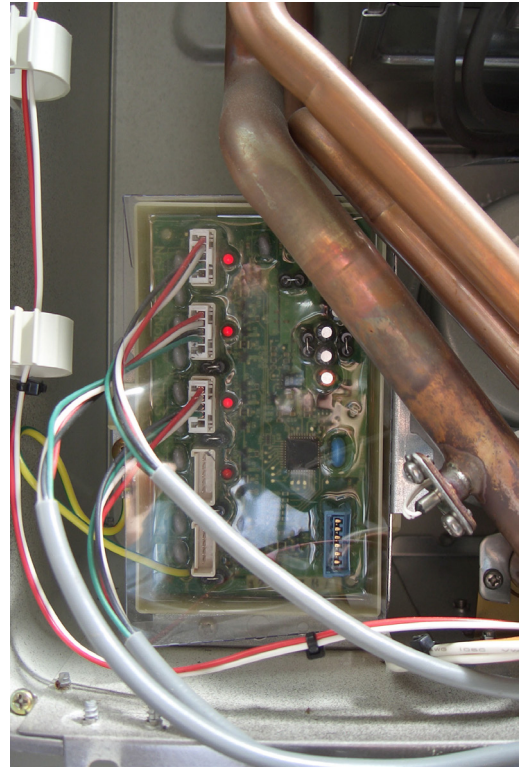
Rinnai INFINITY units can be manifolded together (up to 25) by connecting them in parallel to enable a greater hot water flow rate than is possible with a single unit. MECS is a totally integrated system that links each INFINITY unit in the system and will turn on each unit as required.

The system is designed to ensure gas is not wasted and that an endless supply of hot water is always available.

How it works

A primary and sub-communication PCB is installed in the first unit, and other subsequent units have only the sub-communication PCB installed. The primary communication PCB receives information about the flow rates from the PCB of each unit and balances the load on each. Random selection of the units required to supply the hot water demand means that all units share the workload evenly.

All information is transmitted via communication cables to the secondary units. The primary control also has an inbuilt fault detection system and will allocate a replacement unit should one fail.



MSB-C1, C2 and C3

The C1, C2, and C3 MECS system replaces the previous Rinnai REU-SA2M/2S and REU-SA3M/3S MECS systems.

Part number	Instructions	Description
REU-MSBM	MSB-C1	MECS primary board for INTERNAL installations INSIDE the INFINITY to connect five units.
REU-MSBMB	MSB-C1	MECS primary board for EXTERNAL installations to connect five units.
REU-MSBC1	MSB-C1	Secondary cable to connect one additional unit.
REU-MSBC2	MSB-C2	Joiner cable to daisy chain two MECS primary boards together (up to a maximum of five boards can be connected)
REU-MSBC3	MSB-C3	Secondary cable as a spare part for the older REU-MSA2S MECS system.

WHAT TO USE WHERE

Older MECS system	New installs substitute	Code
REU-MSA2M	REU-MSBM	REUMSBM
REU-MSA2S	REU-MSBC1	REUMSBC3
REU-MSA3M	REU-MSBMB	REUMSBMB
REU-MSA3S	REU-SBC1	REUMSBC1

MECS

MSB-C1, MSB-C2, MSB-C3

INFINITY model compatibility

Current models

HD49kWe external	REU-VCM2837WC-ZK
HD49kWi internal	REU-VCM2837FFC-ZK
HD56kWe external	REU-AM3237WC-ZK
HD250 external	REU-VR3732WC

Superseded models

HD200 external	REU-VRM2332WC
HDi200 internal	REU-VR2362FFU
HD200i internal	REU-VM2632FFUG
HD250 external	REU-VM3237WC
EF250 external	REU-KM3237WD
EFi250 internal	REU-KM3237FFUD-ZK

MECS	Primary PCB			Secondary	Joiner
Position	INSIDE the INF	OR	OUTSIDE the INF	REUMSBC1	REUMSBC2
Code	REUMSBM		REUMSBMB		
Number of water heaters					
2	1		1	-	-
3	1		1	1	-
4	1		1	2	-
5	1		1	3	-
6	2		2	2	1
7	2		2	3	1
8	2		2	4	1
9	2		2	5	1
10	2		2	6	2
11	3		3	5	2
12	3		3	6	2
13	3		3	7	2
14	3		3	8	2
15	3		3	9	2
16	4		4	8	3
17	4		4	9	3
18	4		4	10	3
19	4		4	11	3
20	4		4	12	3
21	5		5	11	4
22	5		5	12	4
23	5		5	13	4
24	5		5	14	4
25	5		5	15	4