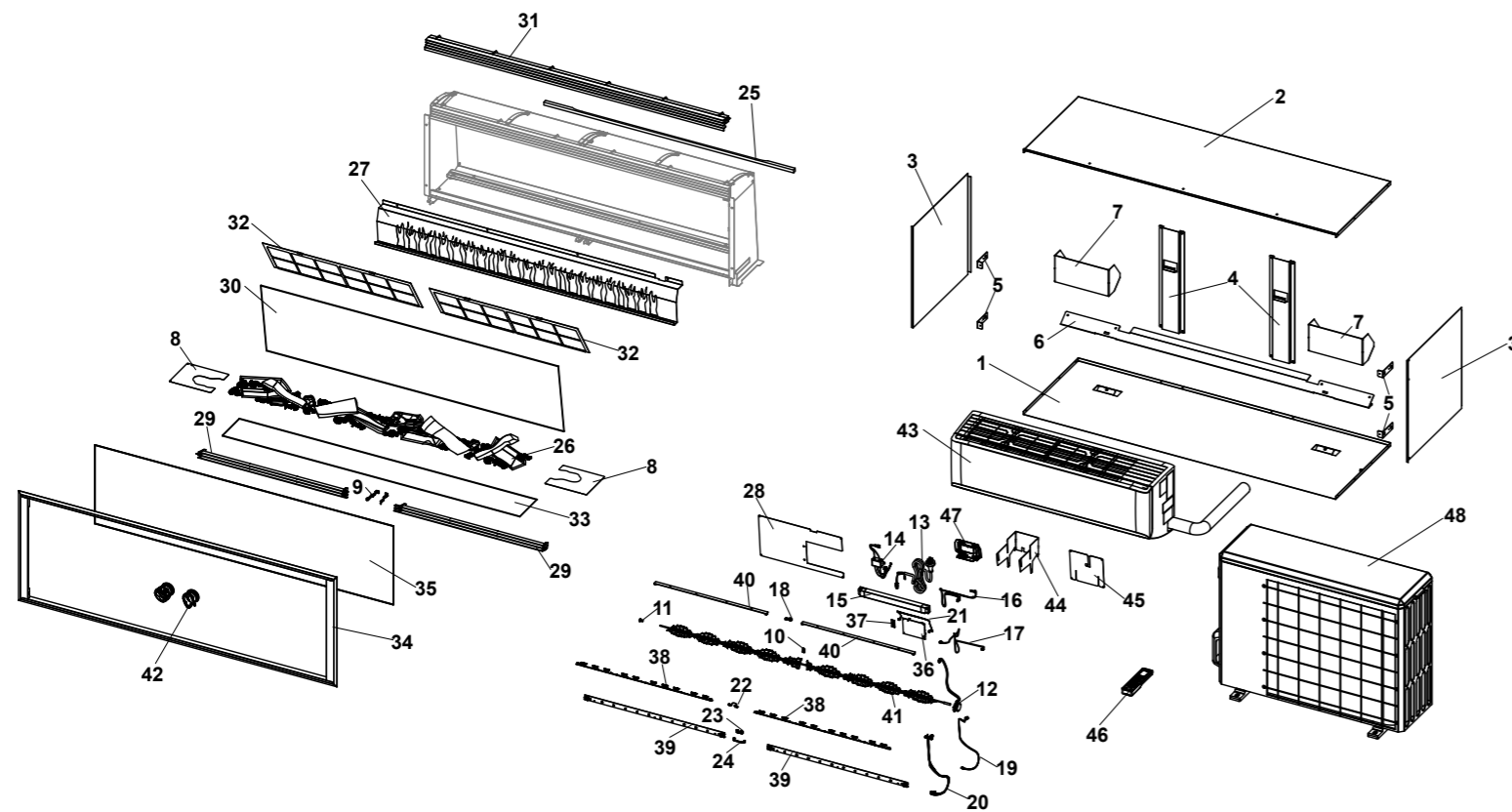


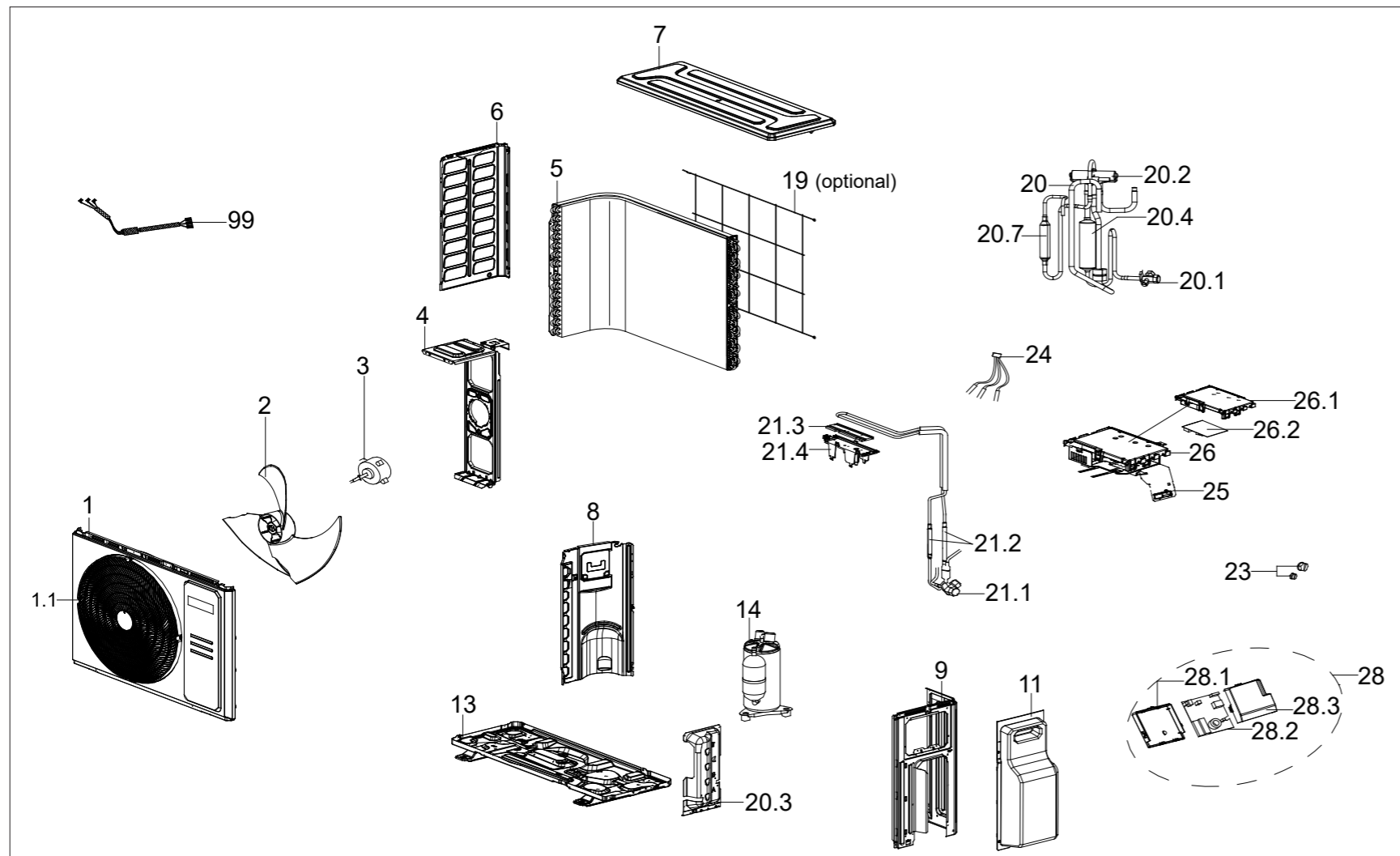
This diagram is provided to assist you to identify parts if replacement is necessary. Contact your place of purchase or the manufacturer to enquire about parts, availability and/or service.



No.	Description	Part
1	Zero clearance box base panel	16301
2	Zero clearance box top panel	16302
3	Zero clearance box side panel	16303
4	Heat pump mounting rail	16304
5	Fire fixing bracket	16305
6	Heat pump location/fixing rail	16324GL
7	Air blanking panel	16372GL
8	Ember bed blanking panel	16367GL
9	Louvre spring tension clip	16310
10	P clip	31436
11	Plastic bush	16319
12	Reflector drive motor	16336
13	Power cord	6765B
14	EMF filter	16369
15	Power supply	16335
16	Harness - mains to power supply	16346
17	Harness - PCB to downlights	16348
18	Harness - downlight joiner	16354
19	Harness - PCB to flame lights	16349
20	Harness - PCB to ember lights	16350
21	Harness - PCB to IR receiver	16347
22	Harness - flame light joiner	16351
23	Harness - ember light joiner A	16352
24	Harness - ember light joiner B	16353
25	Sealing foam	20236
26	Media set - logs, embers, granules	16339
27	Silhouette panel	16312GL
28	Electronic cover panel (incl. wiring diagram)	16376
29	Adjustable louvre (lower)	16377
30	Grey acrylic panel	16378
31	Fixed louvre (upper)	16379
32	Filter (single)	16380
33	Ember base textured acrylic	16381
34	Decorative frame	16382
35	Front anti-reflective glass	16383
36	Control PCB	16384
37	IR receiver PCB	16385
38	Flame light bar	16386
39	Ember bed light bar	16387
40	Downlight bar	16388

No.	Description	Part
41	Reflective scroll bar (incl. motor coupling)	16389
42	Suction cup (pair)	17858
43	Heat pump indoor (complete) (incl. 44, 45, 46, 48)	ESH60
44	HP display mounting bracket	16343GL
45	HP display blanking plate	16345GL
46	Velare remote control	16391
47	Display case	16392
48	Heat pump outdoor (refer next page for individual spares)	HONRTX60

This diagram is provided to assist you to identify parts if replacement is necessary. Contact your place of purchase or the manufacturer to enquire about parts, availability and/or service.



Ref.	Description / ID		Part No.
1	Front panel assembly (includes 1.1) 5-8kW	12222000013505	14292
1.1	Air outlet grille 2.5-8kW	12122000026421	14113
2	Axial flow fan 5-8kW	12100105000841	
3	Brushless DC motor 5-8kW	11002015022212	14274
4	Motor bracket 5-8kW	12222000012371	
5	Condenser assembly 5-7kW	15822000010723	
6	Left side panel 5-8kW	12222000012929	
7	Top cover assembly 5-8kW	12222200005737	14128
8	Partition plate 5-8kW	12222000012366	
9	Right clapboard assembly 5-8kW	12222000019705	
11	Big handle assembly 5-8kW	12122000035404	
13	Chassis assembly 5-6kW	12222000013647	
14	DC inverter rotary compressor 5-6kW	11103020012419	
19	Rear net 5-8kW	12222000013085	
20	4-way valve assembly 5-6kW	15422000024499	
20.1	Gas valve 5-6kW	15500204000058	
20.2	4-way valve 5-8kW	15500216000026	
20.3	Valve plate 5-8kW	12222000017927	
21	Liquid valve assembly 5-6kW	15422000027835	
21.1	High pressure valve 2.5-8kW	15500208000028	
21.2	Throttle valve 5-6kW	15500210004469	
21.2	Throttle valve element 5-6kW	15500210004528	
21.3	Radiator 5-9kW	11203803006816	
21.4	U-type support with copper pipe 5-8kW	12122000033624	
23	Nut brass flare ¼ "	15500406000016	15016
23	Nut brass flare ½ "	15500406000012	15018
24	Combination sensor 5-8kW	11201011000187	14165
25	Electronic installing box sub-assembly 5-6kW	12222000021365	
26	Electronic control box assembly 5-6kW	17222000A72573	14275
26.1	Cover of electronic control box 5-9kW	12122000032542	
26.2	Outdoor main control board sub-assembly 5-6kW	17122000A47675	
28	Terminal board assembly 2.5-8kW	17222000A72534	14269
28.1	Electronic installing box 2.5-8kW	12122000037530	
28.2	Power module board assembly 2.5-8kW	17122000A47674	
28.3	Cover of electronic control box 2.5-9kW	12122000037505	
99	Compressor wires sub-assembly 2.5-8kW	17401203012697	