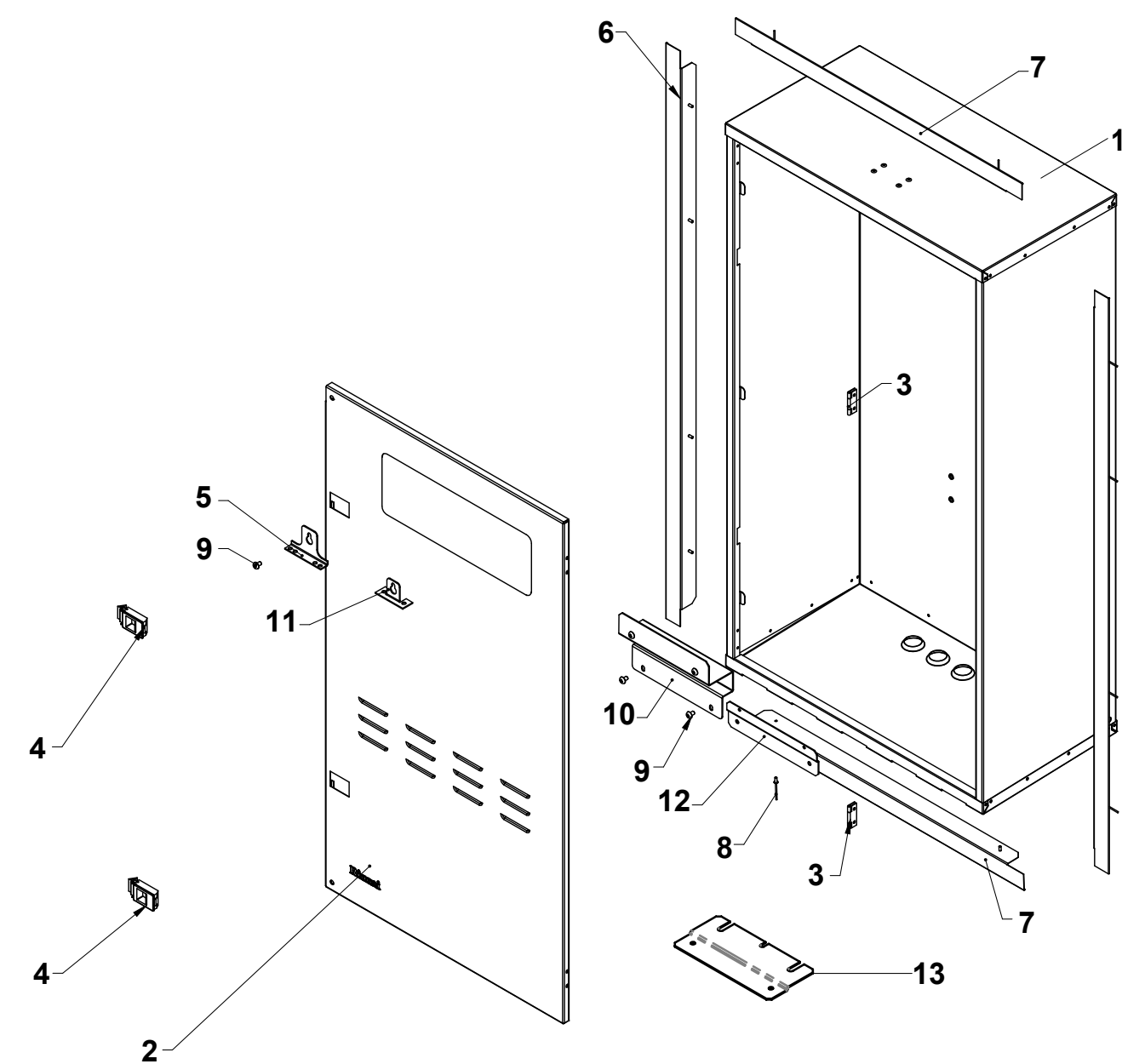


Rinnai

Recess box R1407 v4 (model 4)

This diagram is provided to assist you to identify parts if replacement is necessary. Contact your place of purchase or the manufacturer to enquire about parts, availability and/or service.
Please note: The spares detailed are for version/model four of the R1407 recess box, manufactured from May 2025 onwards.



Ref.	Description	Qty.	Part No.
1	R1407 body	1	-
2	R1407 door	1	6123R
3	Stainless steel (304) hinges	2	6003
4	Black snap-lock latches	2	9609
5	INFINITY top keyhole mounting bracket	1	6103R
6	Side trims	2	5991R
7	Top and bottom trims	2	5992R
8	Stainless steel pop rivets	12	9309
9	Stainless steel (304) M5x8 screws	3	9110
10	EF26 adapter bracket	1	6118R
11	HD49kWe top mounting bracket	1	6119R
12	HD49kWe lower adapter bracket	1	6120R
13	HD56kWe lower adapter bracket	1	6122R

R1407 v4 includes modification to the door, and includes an additional lower bracket to allow an HD56kWe unit to fit.