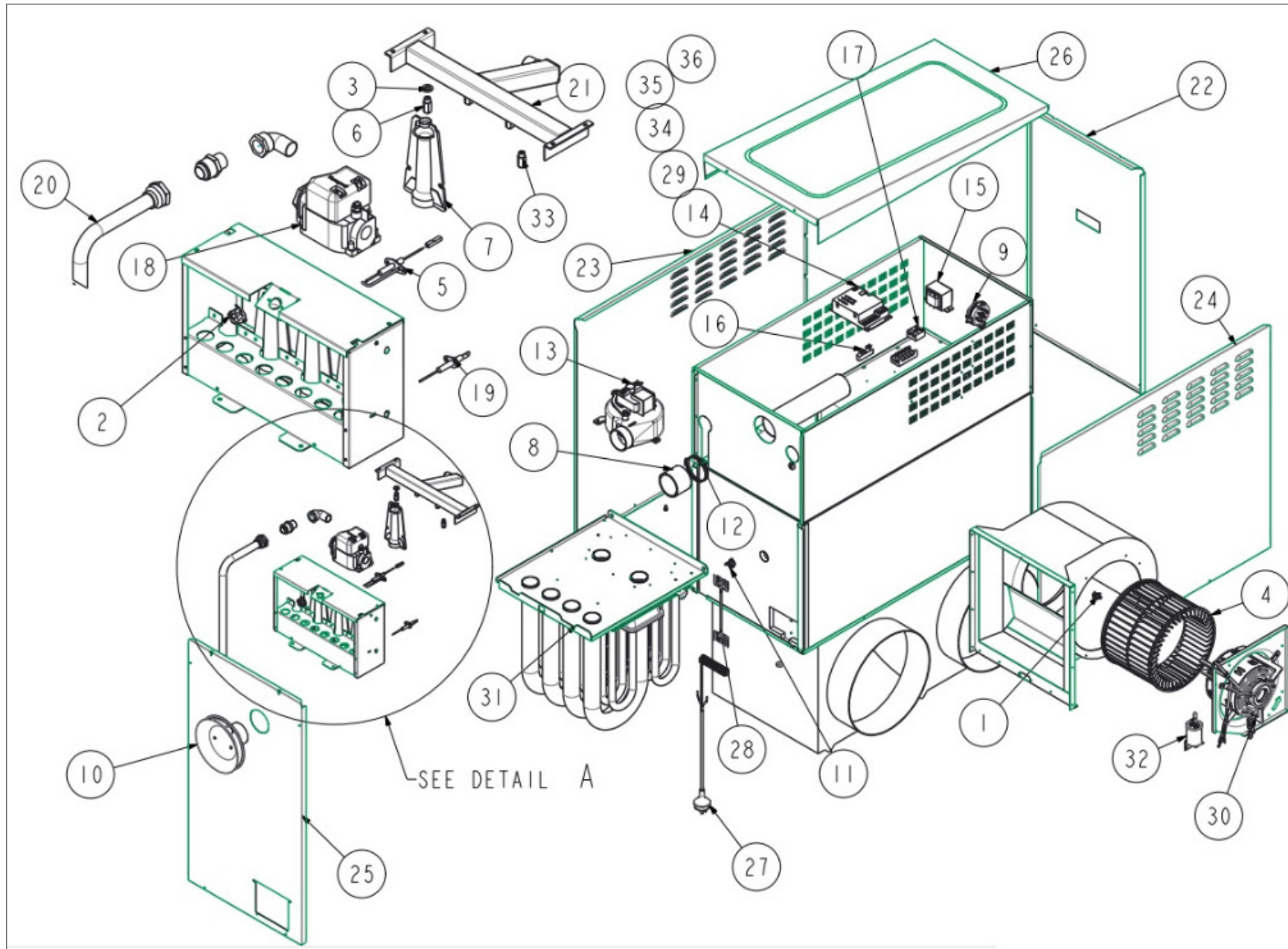




Buffalo 3-star BX326EN 28 kW external spares list

exploded diagram and spares listing



Ref.	Description	
1	Thermostat overhear 57 °C	-
2	Thermostat overhear 90 °C	B009361
3	Washer gas injector C4400	-
4	Fan wheel 10 x 10 plastic	B000127
5	Ignitor spark XXxXX	B021025
6	Injector 2.25 mm NG	-
7	Burner inshot buckets XXxXX	-
8	Joiner flue fan outlet MXeXX	B021368
9	Press switch NS2-1072-00 80 Pa	-
10	Flue terminal assembly XXeXX	B021385
11	Thermostat overhear 110 °C	B021403
12	Clamp hose 59-83 mm HS044	-
13	Combustion fan sohen	-
14	Electronic control tytronics HCDS124-1	B024700
15	Transformer CSX	-
16	Terminal block 4-way	-
17	Terminal black 2-way	-
18	Gas valve CSX Honeywell javelin	-
19	Sensor flame CSX spade	-
20	Feed tube	-
21	Manifold injector NG	-
22	Cabinet end	-
23	Cabinet side LH	-
24	Cabinet side RH	-
25	Cabinet end heat exchanger	-
26	Cabinet lid	-
27	Loom mains heater	-
28	Loom controls extension	-
29	Fuse 2 A 250 V fast glass 2 x 20 mm	B061361
30	Motor assembly	-
31	Heat exchanger assembly plus box	-
32	Capacitor	-
34	Loom CSX fan cabinet	-
35	Loom overhear and powerswitch CSX	-
36	Loom NX BX3	-



Buffalo 3-star BX326EN 28 kW external spares list


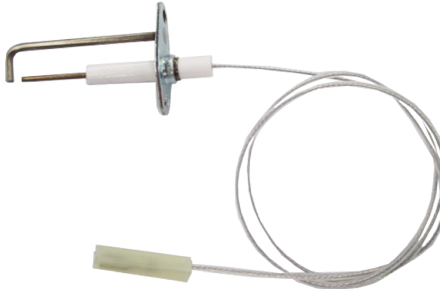
fan, cabinet assembly, electrical controls & components

<p>1</p> 	<p>2</p> 	<p>3</p> 	<p>4</p> 	<p>5</p> 
<p>Fan assembly Capacitor 15 uF 40 QPA 15 kW B019859</p>	<p>Cabinet assembly Joiner flue fan outlet B021368</p>	<p>Electrical controls & components Electronic control tytronics HCDS124-1 B024700</p>	<p>Electrical controls & components Fuse 2 A 250 V fast glass 5 x 20 mm B061361</p>	<p>Electrical controls & components Thermostat overheat 90 °C B009361</p>



Buffalo 3-star BX326EN 28 kW external spares list

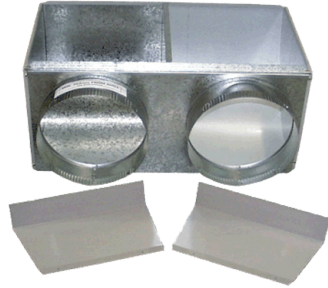
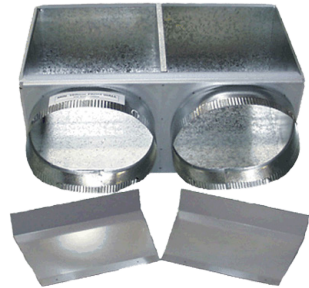
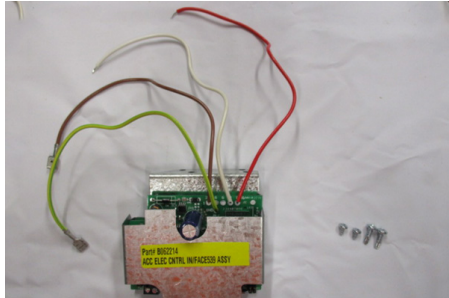
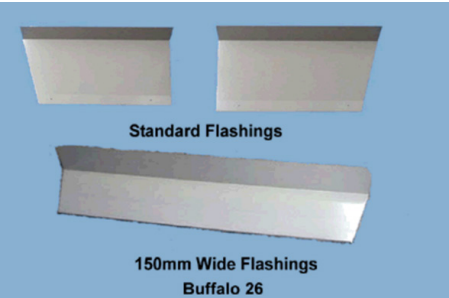

fan assembly, and ignition assembly

<p>1</p> 	<p>2</p> 	<p>3</p> 
<p>Fan assembly Combustion fan GP-motor GRA120 B063030</p>	<p>Fan assembly Fan wheel 10 x 10 plastic B000127</p>	<p>Ignition assembly Ignitor spark XXxXX B021025</p> <p>Take care not to handle ceramic probe as it can be easily damaged.</p>



Buffalo 3-star BX326EN 28 kW external spares list

odds and sods

<p>1</p> 	<p>2</p> 	<p>3</p> 	<p>4</p>  <p>Standard Flashings 150mm Wide Flashings Buffalo 26</p>	<p>5</p> <p>no image available</p>	<p>6</p> 
<p>Base box assembly 14/26 std B010576</p>	<p>Base box 400 mm 26XA B012134</p>	<p>Elect. control interface 539 assy. B062214</p>	<p>Flashing 150 mm B26 std B019007</p>	<p>Flashing 200 mm 26/26XA B019008</p>	<p>Flashing 250 mm 26/26XA B019009</p>
<p>7</p> <p>no image available</p>	<p>8</p> <p>no image available</p>	<p>9</p> <p>no image available</p>			
<p>Flashing 300 mm 26/26XA B0190010</p>	<p>Flashing 350 mm 26/26XA B0190011</p>	<p>Flashing 400 mm 26/26XA B0190012</p>			