

Rinnai

Linear 800 FlameTech log set installation

Experience has shown that the majority of performance problems are caused by burn media being installed incorrectly. Please take the time to read and follow these instructions as malfunctioning due to incorrect burn media placement is not covered by warranty.

- The Linear MUST NEVER be used with other burn media or burn media that is damaged.
- The Linear burn media sets are different and cannot be interchanged, ensure you have ordered the correct set before installation.

Correct placement

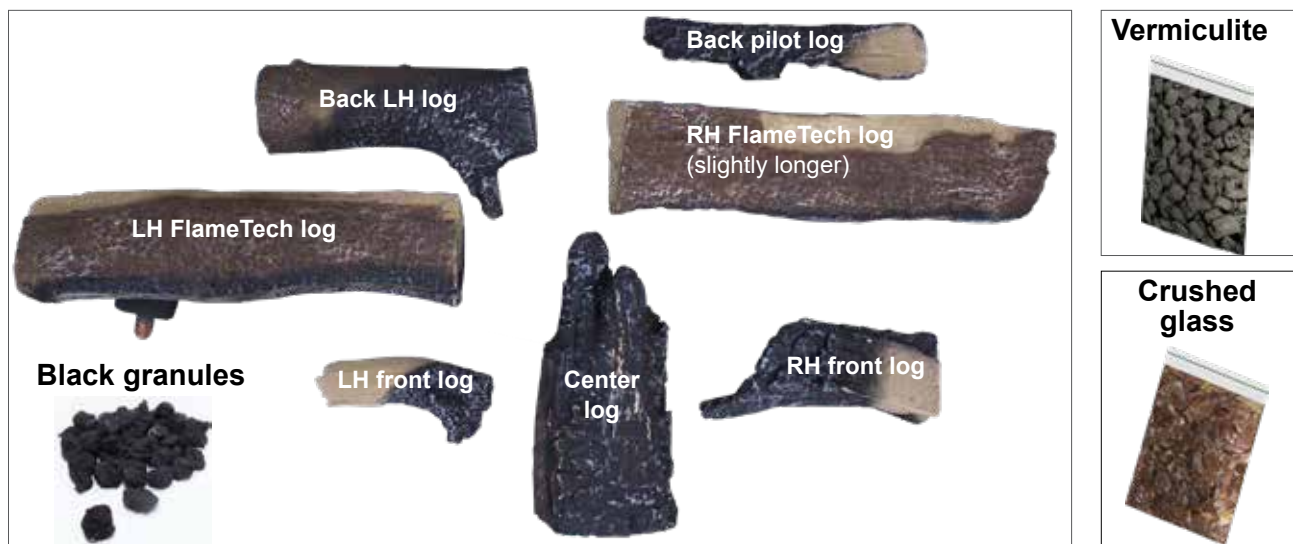
It is important to place the burn media in the correct position. Incorrect placement can create carbon build-up and affect performance.

Single-sided/double-sided

When installing the burn media you will ALWAYS be working on the side where the pilot assembly is to the back of the firebox.

Linear 800 FlameTech log set kit contents

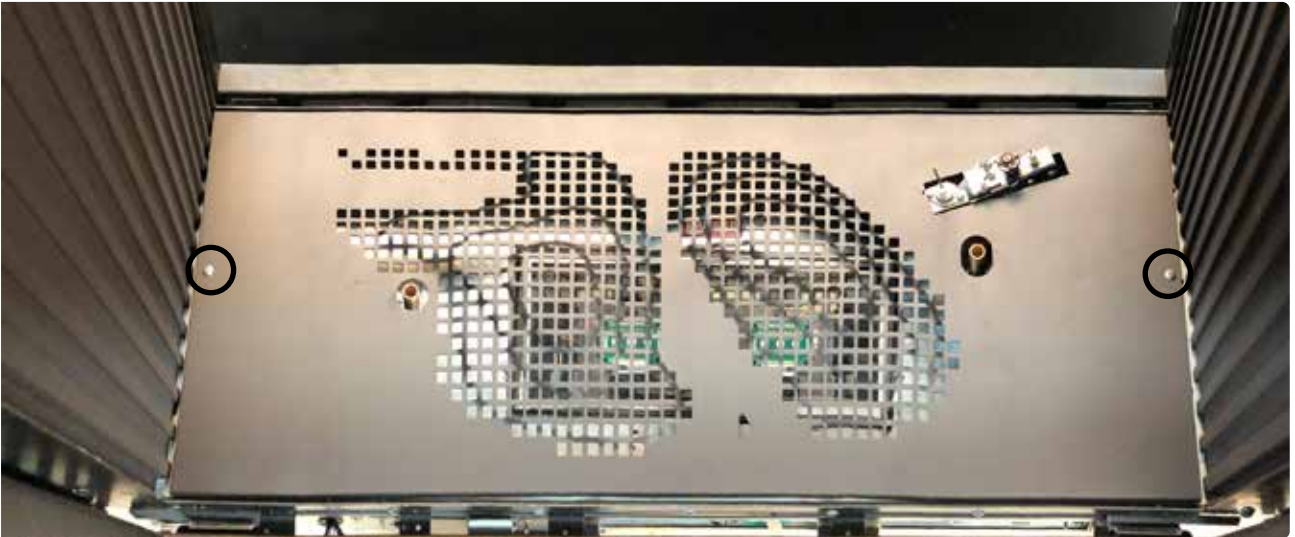
| Part number | Description | Quantity |
|-------------|-----------------|-------------------------|
| 13044 | Vermiculite | 1 bag (approx. 0.375 L) |
| 13471 | Black granules | 1 bag |
| 13472 | Crushed glass | 1 bag (approx. 2.3 kg) |
| 13497 | FlameTech logs | two |
| 13499 | Decorative logs | five |





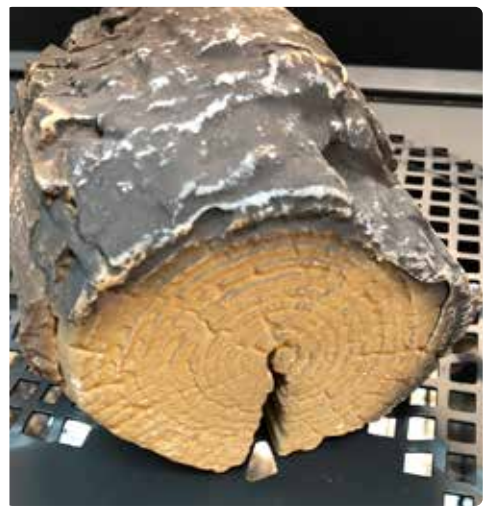
1. Fit the burner tray

Secure the burner tray in place with the two black screws supplied. The installation assumes fitting from the front with the pilot at the back and on the right hand side.



2. Fit the centre log

Sit the log flat on the base and push back into the shape formed in the base panel, note the location of the front slot.



3. Add glass media

Spread approximately 80% of the crushed glass over the base in a single layer as shown. Leave the areas around the pilot, injectors, and back left corner clear.

Check that the injectors are not blocked and the surrounding area is free from glass.



4. Position back left hand log

Fit the second log into the back left corner as shown.



5. Install the FlameTech logs

- Identify the left and right hand flame tech logs—the left is the shorter of the two.
- Starting with the left log carefully fit the FlameTech logs over the aerations sleeves and slide down until the burner sits on the base panel and the center log.

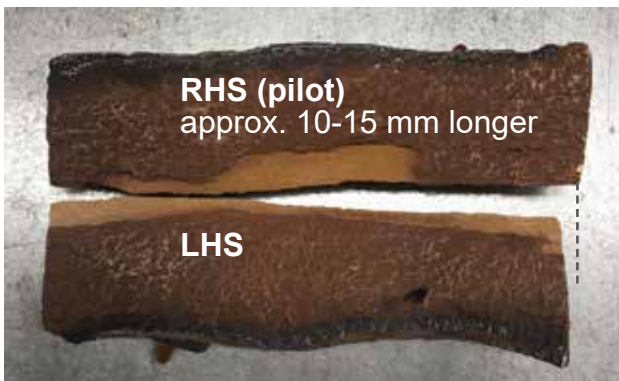
When correctly fitted, the block around the copper tube will sit slightly above the base panel.

All the weight of the burner should be supported by the ends of the log NOT the block or copper tube.

The logs, where they intersect, should have a slight gap between them, and they should sit centrally within the firebox where they cross.

Important

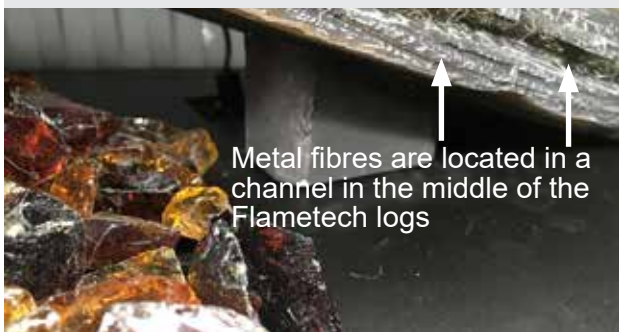
The flame rod needs to be 3-5 mm from the slot in the burner. Make sure there are **no metal fibre strands¹ near the flame rod** as these can touch the flame rod when the fire is going and cause a false flame failure error code. If some strands are poking out of the channel, snip them off—to-date most of the installation problems are due to wires touching the flame rod.



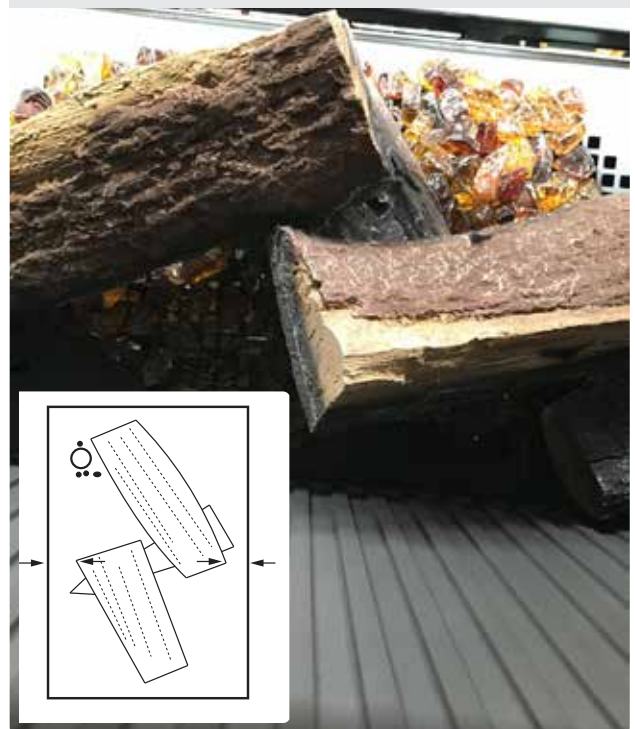
FlameTech logs sit on the base panel and center log.



FlameTech log showing the burner block.



FlameTech logs sit centrally with a small gap between.



Flame rod CLEAR of metal log fibres.



¹ There is a rope of metal fibres that sit in the slot around the base of the burner that the gas diffuses through, and depending on how well it's been packed into the slot, there can be random strands sticking out that can touch the flame rod.

6. Apply remaining glass

Apply the remaining glass around the FlameTech logs as shown—if a double-sided model, check layout from both sides.



7. Fit the two front logs

Fit the two front decorative logs as shown.



8. Fit pilot log

Fit pilot log as shown.



9. Apply granules and vermiculite

Add the large black granules and black vermiculite, and arrange as shown. The granules and vermiculite can be spread around the base panel if desired as it is only decorative—DO NOT PLACE AROUND THE PILOT.



10. Test operation

Start the fire and check for complete ignition around both burners. If the fire starts then turns off after five seconds, it is most likely due to the flame rod being too far away from the burner, adjust as required.



Rinnai Australia Pty Ltd

100 Atlantic Drive, Keysborough, Victoria 3173
P.O. Box 460, Braeside, Victoria 3195
Tel: +613 92716625
Fax: +613 92716622

National Help Line

Tel: 1300 555 545* Fax: 1300 555 655*

** Cost of a local call higher from mobile or public phones*

www.rinnai.com.au
enquiry@rinnai.co.au

Rinnai New Zealand Ltd

105 Pavilion Drive, Mangere, Auckland 2022
P.O. Box 53177, Auckland Airport, Auckland 2150
Tel: +64 9 257 3800
Fax: +64 9 257 3899

0800 Rinnai

0800 746 624

www.rinnai.co.nz
info@rinnai.co.nz