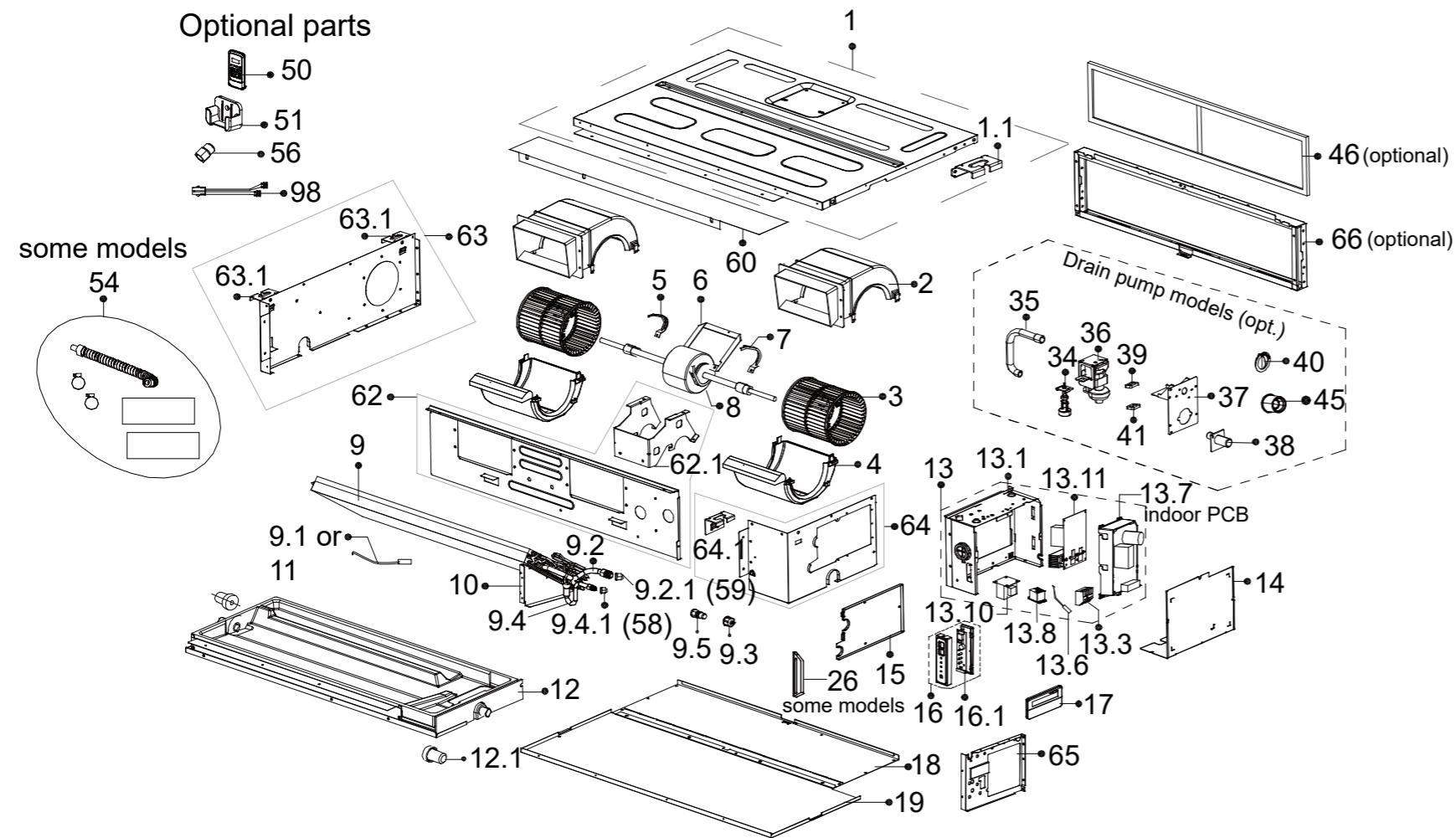


Pro Series Ducted 7 kW indoor unit (DINLR07B1)

This diagram is provided to assist you to identify parts if replacement is necessary. Contact your place of purchase or the manufacturer to enquire about parts, availability and/or service.

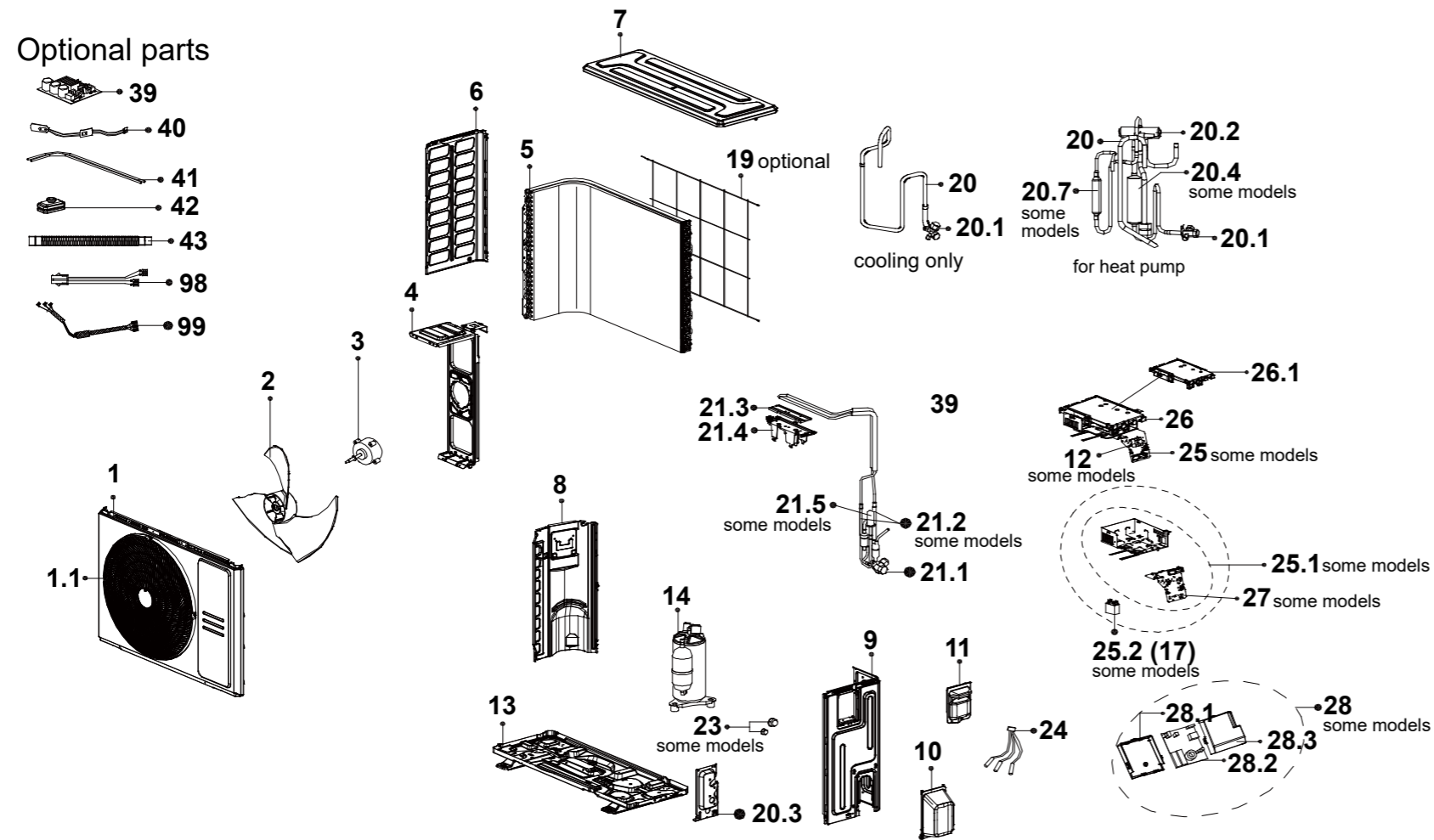


Ref.	Description (ID)	Part No.
1	Chassis sub-assembly	12223000008107
1.1	Hook	12223000012926
2	Top volute sub-assembly	12123000002521
3	Fan scroll	12100103000586
4	Bottom volute	12123000000806
5	Fan motor axes clamp (left)	12222500000253
6	Fan motor fixing board	12223000000537
7	Cover	12222500000255
8	Brushless DC motor	11002015002521 14151
9	Evaporator assembly	15823000004563

Ref.	Description (ID)	Part No.
9.1	Pipe temperature sensor	11201007000136 14156
9.2	Evaporator outlet pipe sub-assy	15123000008702
9.3	Pipe nut	15500404000005
9.4	Evaporator inlet pipe sub-assembly	15123000011148
9.5	Detection valve	15500209000002
10	Evaporator right support board sub-assy	12223000006644
12	Water collector assembly	12823000000130
12.1	Plug	12600801000883
13	Duct electronic control box sub-assy	17223000A07238
13.3	Terminal	17400401000080

Ref.	Description	Part No.
13.6	Room temperature sensor	11201007000283 14157
13.7	Duct main control board sub-assembly (indoor PCB)	17123000A03550 14226
13.10	Reactor	17400306000070
13.11	Inverter control board sub-assembly	17122000051662
14	Electronic control box cover	12223000006641
16	Duct display board sub-assembly	17223000000003 84000085
16.1	Duct display board sub-assembly	17123000002712
18	Rear cover sub-assembly	12223000007988
19	Top cover sub-assembly	12223000007989
26	Right clapboard strengthen board	12223000006643
34	Water level sensor	11201005000006
36	Induction pump	11001010000063
37	Exhaust pump sub-assembly	12223000A02732
38	Drain hose	12100510000021
39	Drain pump rubber washer	12622500000004
40	Cover of water testing hole	12123000000043
41	Drain pump rubber washer	12622500000003
54	Accessory kit	12011600A00310
58	Flare nut	15500406000010
59	Flare nut	15500406000003
60	Front beam sub-assembly	12223000008112
62	Middle beam sub-assembly	12223000008875
63	Left clapboard sub-assembly	12223000008111
63.1	Hook	12223000012927
64	Right clapboard sub-assembly	12223000008113
64.1	Hook	12223000012927
65	Right side plate	12223000008114
66	Right clapboard sub-assembly	12223000008109

This diagram is provided to assist you to identify parts if replacement is necessary. Contact your place of purchase or the manufacturer to enquire about parts, availability and/or service.



Ref.	Description	Part No.	
21	Liquid valve assembly	15422000024128	
21.1	Liquid valve	15500208000286	
21.2	Throttle valve	15500210003309	
21.3	Radiator	11203803001176	
21.4	U-type support with copper pipe	12122000011478	
23	Flare nut	15500406000003	
23	Flare nut	155004060000010	
24	Combination sensor	11201011000188	14129
25	Terminal board sub-assembly	17222000031639	14146
26	Electronic control box sub-assembly	17222000035814	14206
26.1	Electronic installing box	12122000008999	
26.2	Outdoor main control board sub-assembly	17122000061294	
28	Terminal board sub-assembly	17222000036636	14207
28.1	Electronic installing box	12122000026561	
28.2	Inverter control board sub-assembly	17122000054444	
28.3	Electronic control box cover	12122000026562	
33	Outdoor unit name plate	16022000C11074	
99	Compressor wire sub-assembly	17401203012697	

Ref.	Description (ID)	Part No.	
1	Front panel	12222000013505	
1.1	Air outlet grille	12122000026421	
2	Axial flow fan	12100105000841	
3	Brushless DC motor	11002015000366	14127
4	Fan motor bracket	12222000012371	
5	Condenser assembly	15822000009796	
6	Left side panel	12222000012929	
7	Top cover assembly	12222200005737	14128
8	Partition board assembly	12222000013245	
9	Right clapboard assembly	12222000012930	

Ref.	Description (ID)	Part No.
10	Water collector	12122000007150
11	Big handle assembly	12122000031166
13	Chassis assembly	12222000013247
14	DC inverter rotary compressor	11103020004360
19	Rear net	12222000013085
20	4-way valve assembly	15422000016833
20.1	Gas valve	15500204000502
20.2	4-way valve	15500216000026
20.3	Valve plate	12222200005738
20.7	Muffler sub-assembly	15122000025163