

Linear / LS collection Outer finishing trim installation



New Zealand model - Linear, Australian model - LS

Installation of the Linear / LS requires combustible wall linings to be installed flush with the lips of the appliance. With plasterboard a smooth flush finish can be problematic. The outer finishing trim accessory, powder coated black, is designed to achieve a smooth edge finish without plastering against the fire. The image at the bottom of the page shows the 15 mm outer finishing trim installed. There are two finishing trims available:

- Thin 15 mm finishing trim—provided as standard in Australian LS models
- Wide 50 mm finishing trim

The trims are easy to install, no fixing is required. They are designed to be clipped via tabs (circled below) into the finishing trim latches positioned on the fire.



The trim is not designed to be inserted in and out of the trim latches multiple times. This will weaken and potentially break the metal tabs. We suggest fitting the trim once the wall is completed—ensure the wall is flat and smooth, and avoid joins in the lining around the fire.

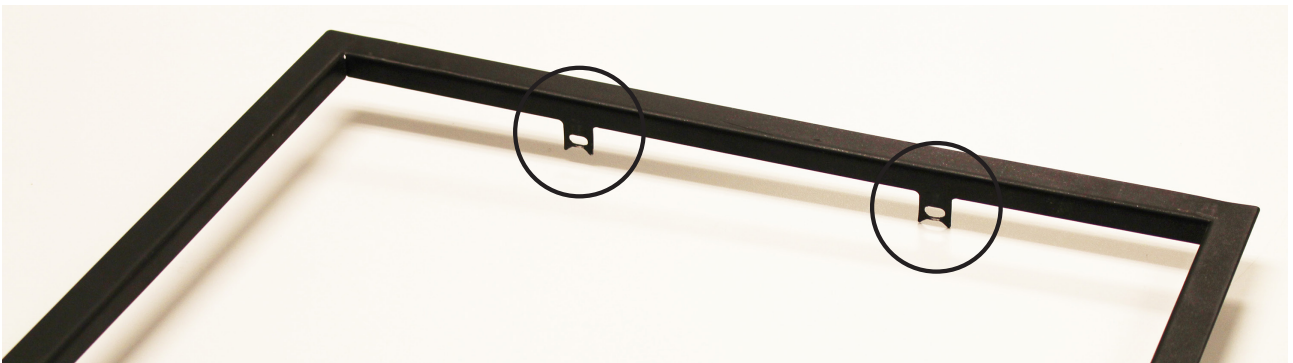
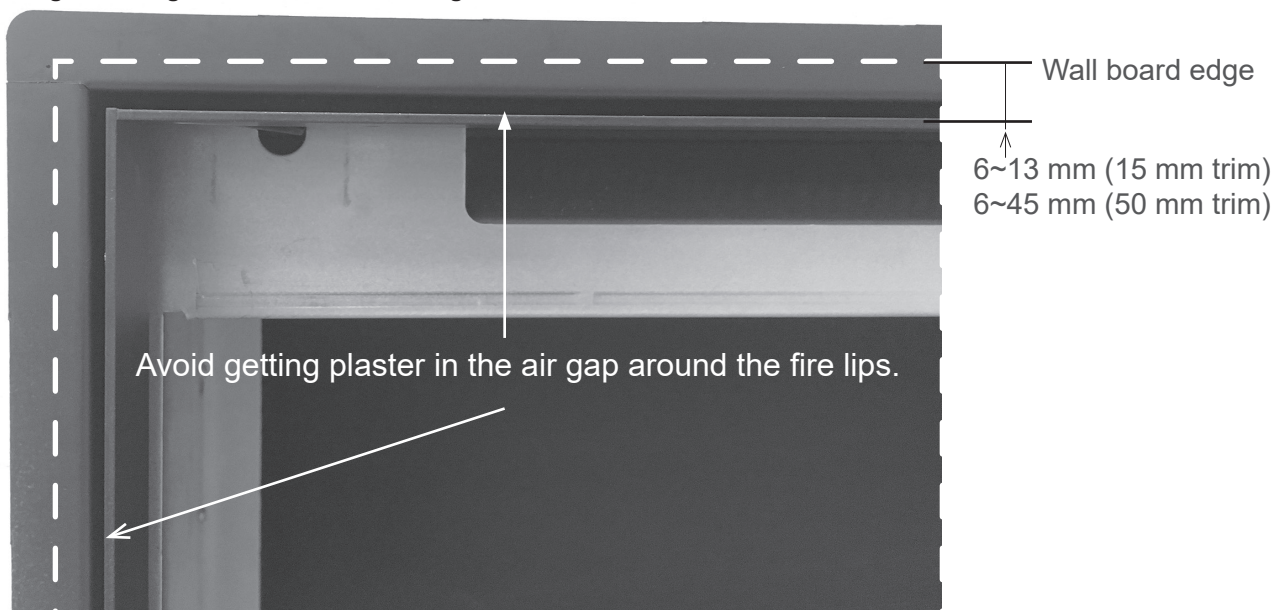


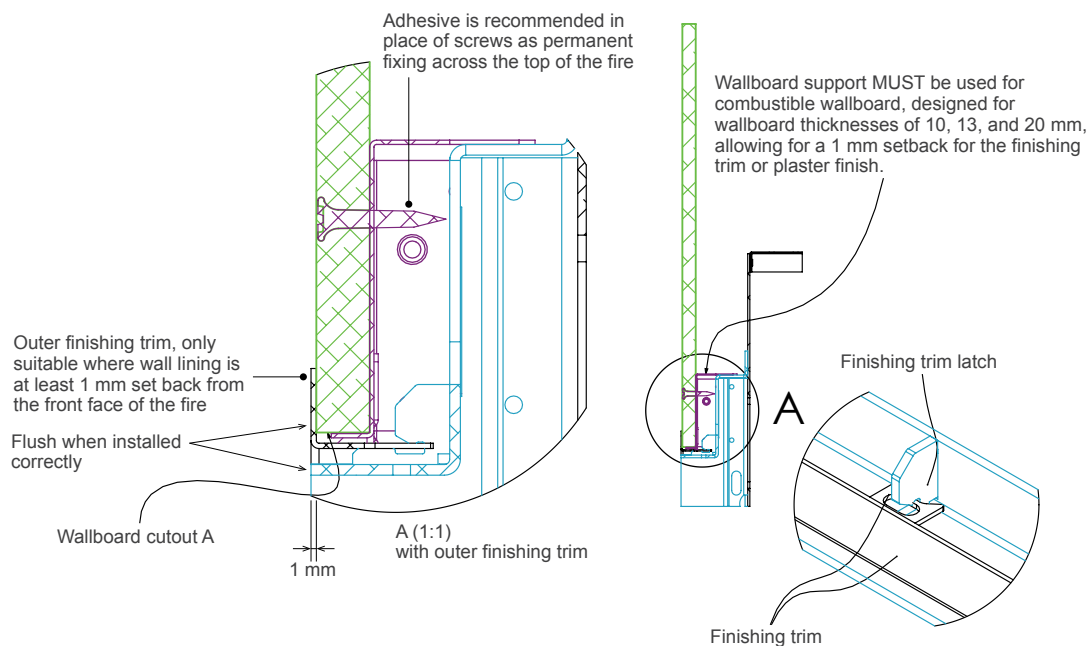
Image showing the thin 15 mm finishing trim installed



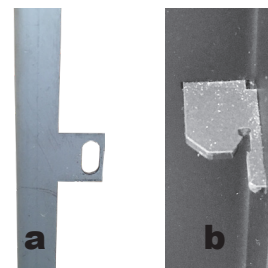
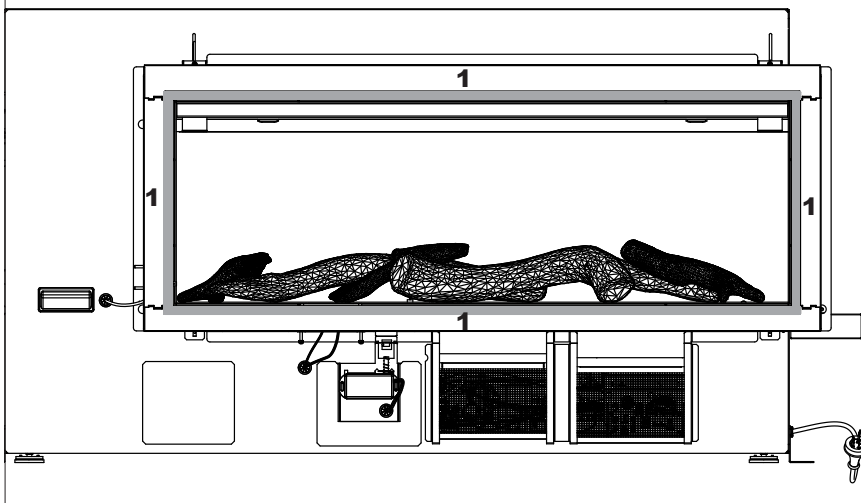
Linear / LS collection Outer finishing trim installation

Installation

1. Line up the finishing trim in front of the fire. It will be fitted **INSIDE** the metal wallboard support rails that surround the fire. Refer grey shaded section in the line drawing at the bottom of the page.
2. Carefully bump the trim into place using the base of your palm. Only do this where the clips are, you will hear a slight click as the tabs lock in place. Below is an image to highlight the connection of the slot into the latch (top section example).



Grey shaded section around the fire shows the position of the outer finishing trim. This example shows the thin 15 mm variant. The sections denoted **(1)** are the wall support rails.



- | | |
|----------|---|
| a | Outer finishing trim (side view).
N.B: Final trim is painted black |
| b | Example of a side trim latch.
N.B: You will not see this when installing the trim as the wallboard support rail will be covering it. |