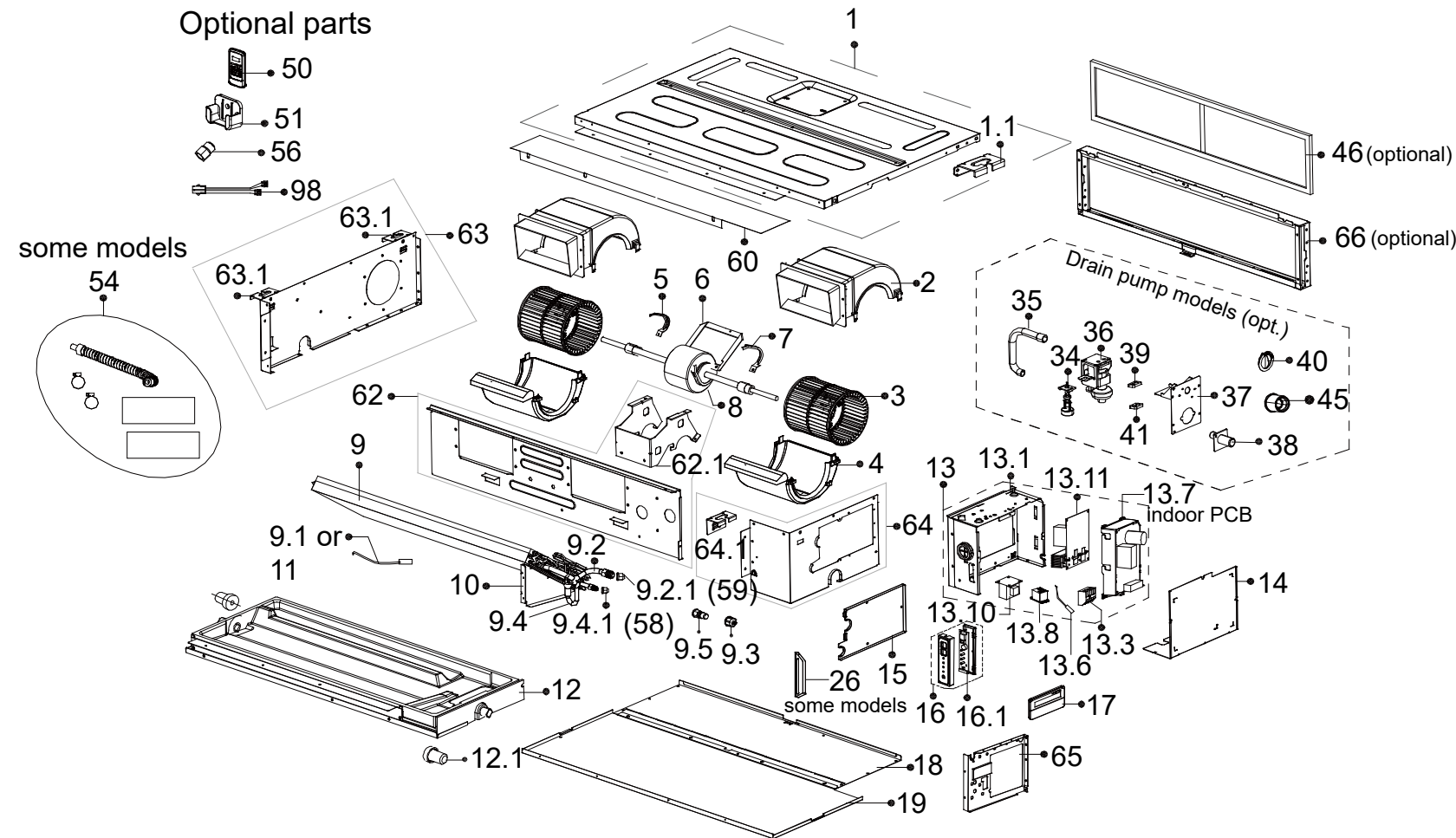


Pro Series R32 Ducted 9 kW indoor unit (DINLR09B1)

This diagram is provided to assist you to identify parts if replacement is necessary. Contact your place of purchase or the manufacturer to enquire about parts, availability and/or service.



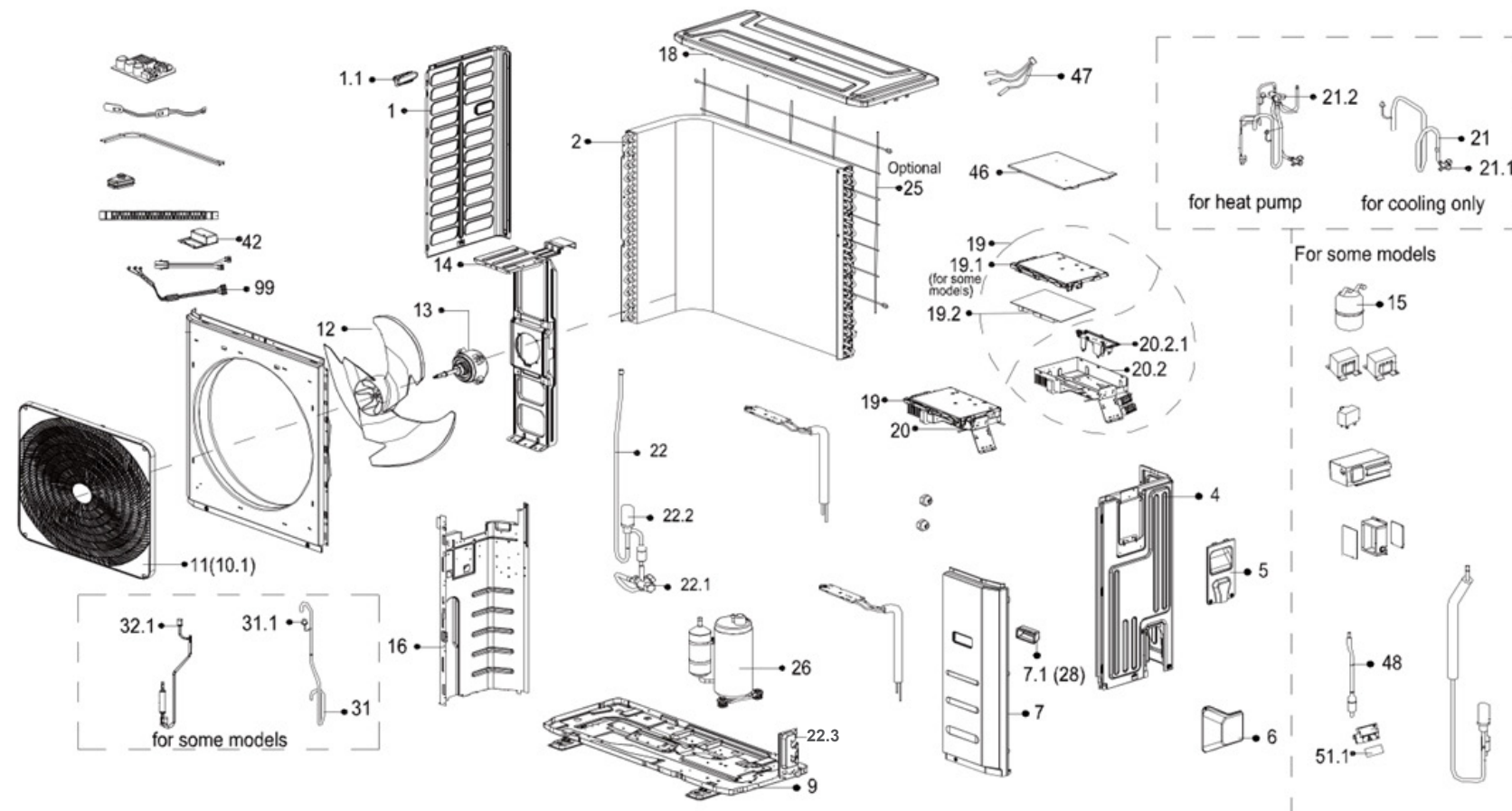
Ref.	Description (ID)	Part No.	
1	Chassis sub-assembly	12223000008585	
1.1	Hook	12223000012926	
2	Top volute sub-assembly	12123000002301	
3	Fan scroll	12100103000984	
4	Bottom volute	12123000002523	
5	Fan motor axes clamp (left)	12222500000253	
6	Fan motor fixing board	12223000006639	
7	Cover	12222500000255	
8	Brushless DC motor	11002015002541	14198
9	Evaporator assembly	15823000004564	

Ref.	Description (ID)	Part No.	
9.1	Pipe temperature sensor	11201007000136	14156
9.2	Evaporator outlet pipe sub-assembly	15123000008702	
9.3	Pipe nut	15500404000005	
9.4	Evaporator inlet pipe sub-assembly	15123000011147	
9.5	Detection valve	15500209000002	
10	Evaporator right support board sub-assy	12223000006644	
12	Water collector assembly	12823000000110	
12.1	Plug	12600801000883	
13	Duct electronic control box sub-assy	17223000A07239	
13.3	Terminal	17400401000023	

Ref.	Description (ID)	Part No.	
13.6	Room temperature sensor	11201007000283	14157
13.7	Duct main control board sub-assy (indoor PCB)	17123000A03548	14227
13.10	Reactor	17400306000070	
13.11	Inverter control board sub-assy	17122000027748	
14	Electronic control box cover	12223000006641	
15	Pipe clamp board sub-assembly	12223000A02730	
16	Duct display board sub-assembly	17223000000003	84000085
16.1	Duct display board sub-assembly	17123000002712	
18	Rear cover sub-assembly	12223000008584	
19	Top cover sub-assembly	12223000008586	
26	Right clapboard strengthen board	12223000006643	
34	Water level sensor	11201005000006	
36	Induction pump	11001010000063	
37	Exhaust pump sub-assembly	12223000A02732	
38	Drain hose	12100510000021	
39	Drain pump rubber washer	12622500000004	
40	Cover of water testing hole	12123000000043	
41	Drain pump rubber washer	12622500000003	
54	Accessory kit	12011600A00310	
58	Flare nut	15500406000010	
59	Flare nut	15500406000003	
60	Front beam sub-assembly	12223000008583	
62	Middle beam sub-assembly	12223000008856	
63	Left clapboard sub-assembly	12223000008111	
63.1	Hook	12223000012927	
64	Right clapboard sub-assembly	12223000008113	
64.1	Hook	12223000012927	
65	Right side plate	12223000008114	
66	Right clapboard sub-assembly	12223000008579	

Pro Series R32 Ducted 9 kW outdoor unit (DONSR09B1)

This diagram is provided to assist you to identify parts if replacement is necessary. Contact your place of purchase or the manufacturer to enquire about parts, availability and/or service.



Ref.	Description (ID)	Part No.
1	Left side plate assembly of cabinet	12222000006665
1.1	Small handle	12100701000033
2	Condenser assembly	15822000014415
4	Rear right clapboard assembly	12222000006664
5	Big handle assembly	12222000013365
6	Water collector	12122200002695
7	Front right clapboard assembly	12222500A00135
7.1	Handle	12100702000038
9	Chassis assembly	12222000004018
10	Front panel	12222000004983

Ref.	Description	Part No.
11	Air outlet grille	12122000020245
12	Axial flow fan	12100105000084
13	Brushless DC motor	11002015000247
14	Motor bracket assembly	12222000005162
15	Liquid-storage tank	15500508000002
16	Partition board assembly	12222000012328
18	Top cover assembly	12222500000587
19	Electronic control box subassembly	17222000036014
19.1	Cover of electronic control box	12122000025662
19.2	Outdoor main control board sub-assy	17122000053863

Ref.	Description	Part No.	Part No.
20	Terminal board sub-assembly	17222000036015	14205
20.1	Terminal	17400401000075	
20.2	Electronic installing box sub-assembly	12222000012985	
20.2.1	U-typed support with copper pipe	12122000024381	
21	4-way valve assembly	15422500000236	
21.1	Gas valve	15500204000025	
21.2	4-way valve	15500216000681	
21.4	Suction pipe	15123000008207	
21.5	Discharge pipe	15123000003661	
22	Liquid valve assembly	15422000020353	
22.1	Liquid valve	15500208000286	
22.2	Valve plate	15500213002289	
22.3	Valve plate	12222200002110	
24	Flare nut	15500406000003	
24	Flare nut	15500406000010	
25	Rear net	12222000006604	
26	DC inverter rotary compressor	11103020000719	
31	Suction pipe assembly	15122500001076	
31.1	Pressure switch	17400516000848	
32	Discharge pipe assembly	15122000028897	
32.1	Pressure switch	17400516000849	
42	DR module box sub-assembly	17222300002768	
46	Electronic control box cover	12122000016029	
47	Combination sensor	11201011000188	14129
48	Throttle valve sub-assembly	15422000020352	
51	Key board box sub-assy (not shown)	17222000031403	
51.1	Key board sub-assembly	17122000048520	
51.2	DR installing foundation	12122000025661	
53	Outdoor unit name plate	16022000C11074	
99	Compressor wire sub-assembly	17401203000751	