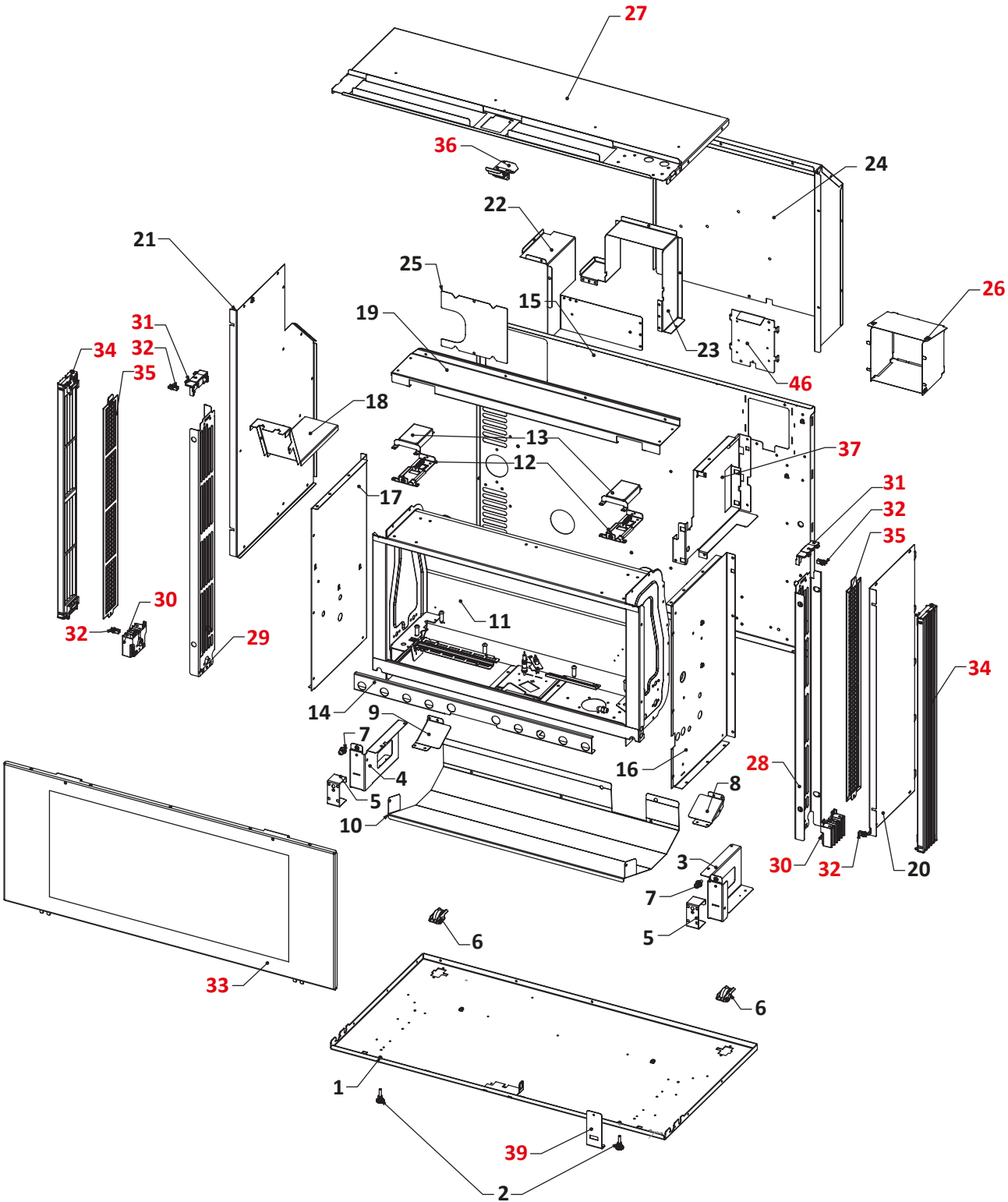


Rinnai

Arriva 750 gas fireplace

This diagram is provided to assist you to identify parts if replacement is necessary. Contact your place of purchase or the manufacturer to enquire about parts, availability and/or service.

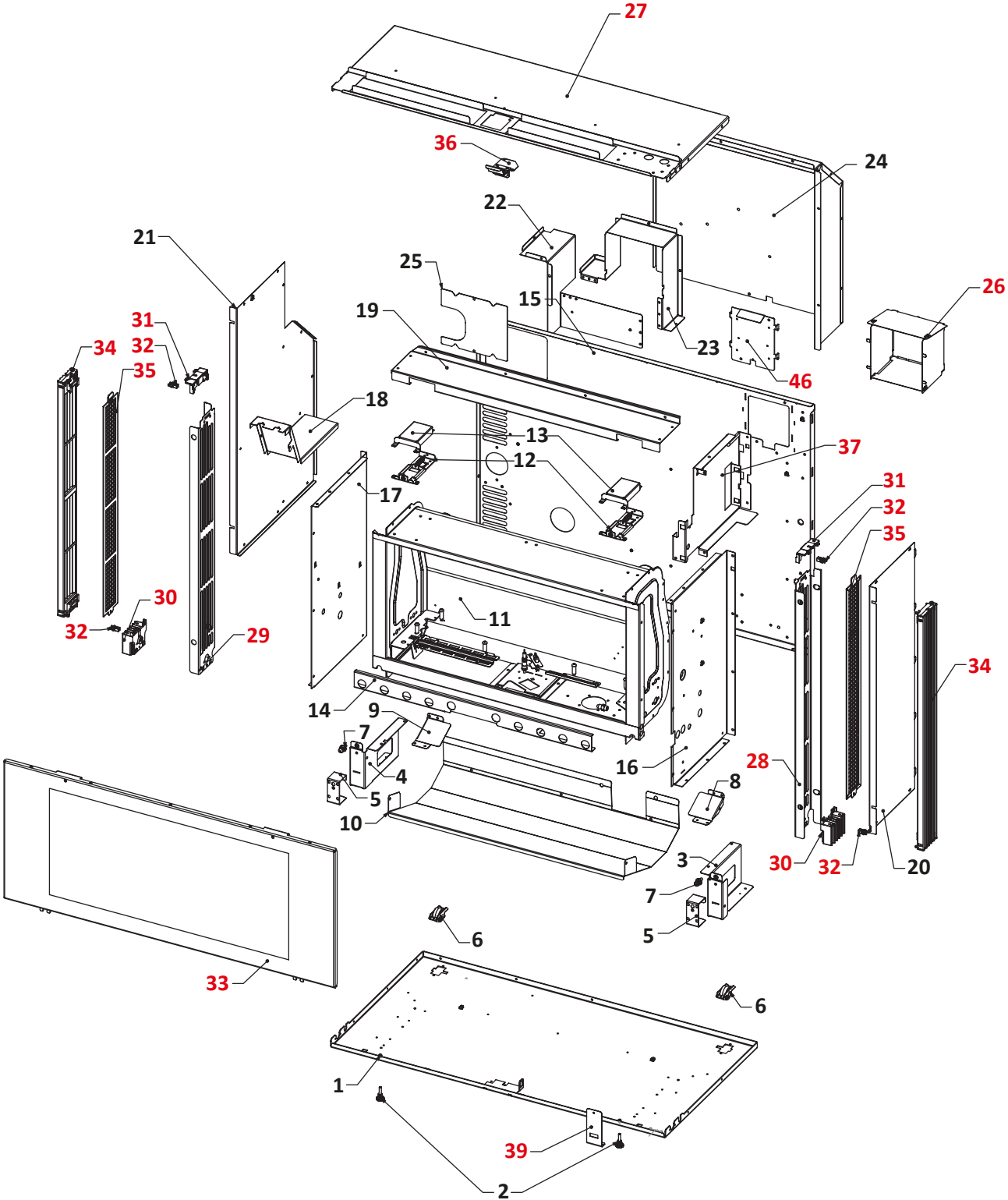


Ref.	Description	Qty.	Part No.
1	Base panel	1	10201
2	Foot kit	2	10777
3	Bracket combustion chamber support RH (non-serviceable part)	1	-
4	Bracket combustion chamber support LH (non-serviceable part)	1	-
5	Bracket front mount	2	10458
6	Wheel kit Arriva/Lumina	2	10751
7	Glass retainer spring kit	2	10778
8	Panel air diverter RH	1	10232
9	Panel air diverter LH	1	10231
10	Panel lower air guide - powder coat	1	10209M
11	Combustion chamber assembly painted (non-serviceable part)	1	-
12	Glass retainer slide assembly	2	10780
13	Glass retainer slide cover	2	10390
14	Panel burner shield painted	1	10224
15	Panel heat shield rear	1	10204
16	Panel heat shield RH	1	10202
16	Panel heat shield RH JP (manufactured 25-Feb 2009 and after, serial number starting at 12845. NOTE: #16a, 61a and 65a must be replaced as a set)	1	10427
17	Panel heat shield LH	1	10203
17	Panel heat shield LH JP (manufactured 22-Apr 2009 and after, serial number starting at 12927)	1	10431
18	Panel combustion fan flue divider	1	10262
18	Panel combustion fan flue divider JP (manufactured 03-Feb 2009 and after, serial number starting at 12766)	1	10432
19	Panel flue infill	1	10208
20	Panel outer RH	1	12233
21	Panel outer LH	1	12232
22	Panel combustion fan inlet 'A'	1	10263
23	Panel rear air inlet 'B'	1	10264
24	Combustion fan cover	1	10781
25	Panel cover flue outlet	1	10213
	numbers 26-46 (in red) shown on next page		

Rinnai

Arriva 750 gas fireplace

This diagram is provided to assist you to identify parts if replacement is necessary. Contact your place of purchase or the manufacturer to enquire about parts, availability and/or service.

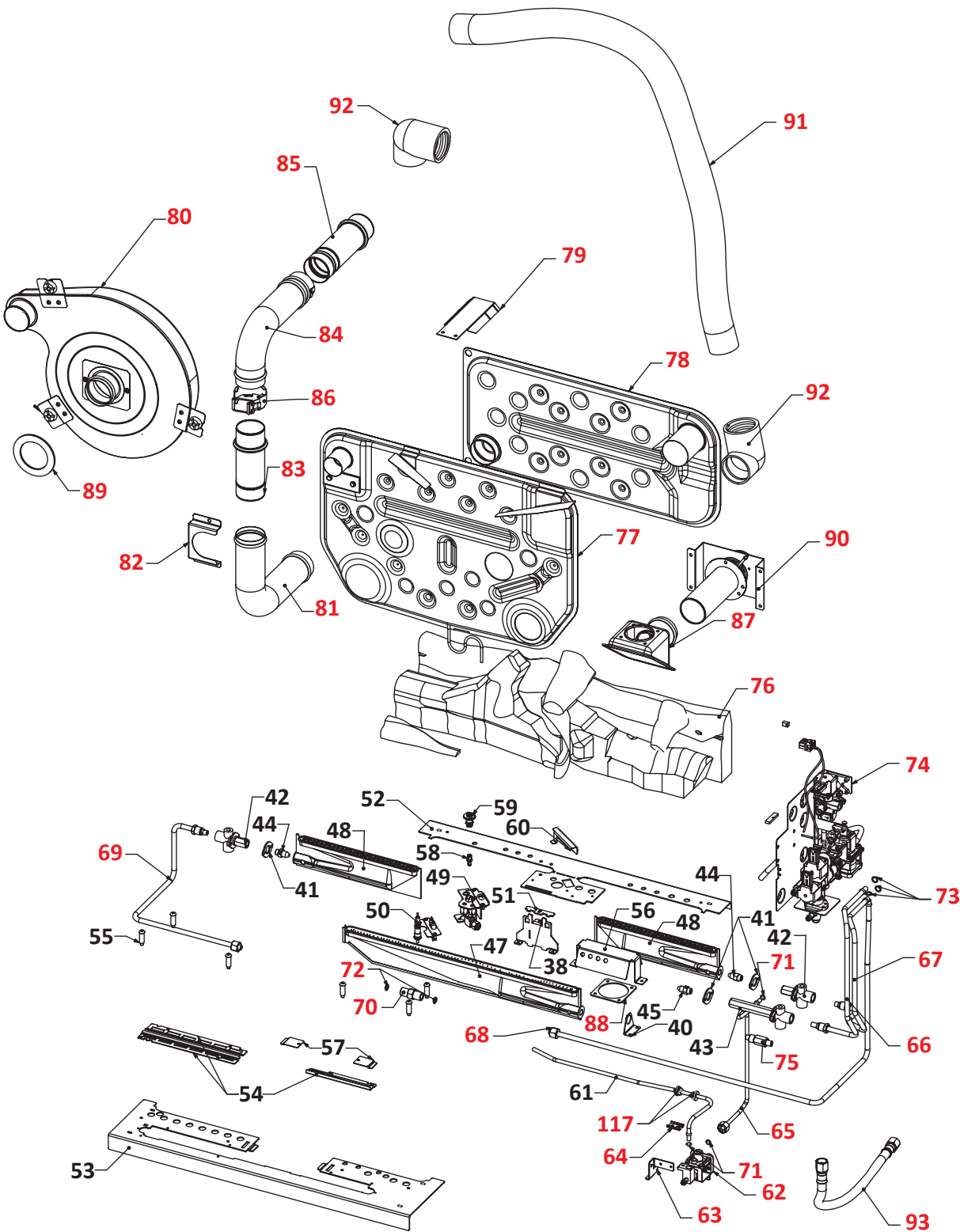


Ref.	Description	Qty.	Part No.
26	Panel cover transformer	1	10412
26	Panel cover transformer (manufactured 26-Feb 2009 and after, serial number starting at 12861)	1	10869
27	Top panel engine assembly	1	10207
28	Louvre side support RH black	1	10296M
29	Louvre side support LH black	1	10297M
30	Louvre hinge kit (contains 1 upper and 1 lower hinge)	2	10752
31	Louvre hinge kit (contains 1 upper and 1 lower hinge)	2	10752
32	Door latch kit (contains 4 latches)	1	10750
33	Combustion chamber glass assembly	1	10782
-	Glass seal - 2 m required per glass frame (glass seal is typically part of 10782: Combustion chamber glass assy)	1	10356
34	Louvre side assembly	2	10783
35	Screen kit	2	10784
36	Wax element assembly	1	10785
37	Main PCB bracket assembly	1	10786
39	Bracket receiver	1	10255
46	Bracket transformer mount	1	10413

Rinnai

Arriva 750 gas fireplace

This diagram is provided to assist you to identify parts if replacement is necessary. Contact your place of purchase or the manufacturer to enquire about parts, availability and/or service.

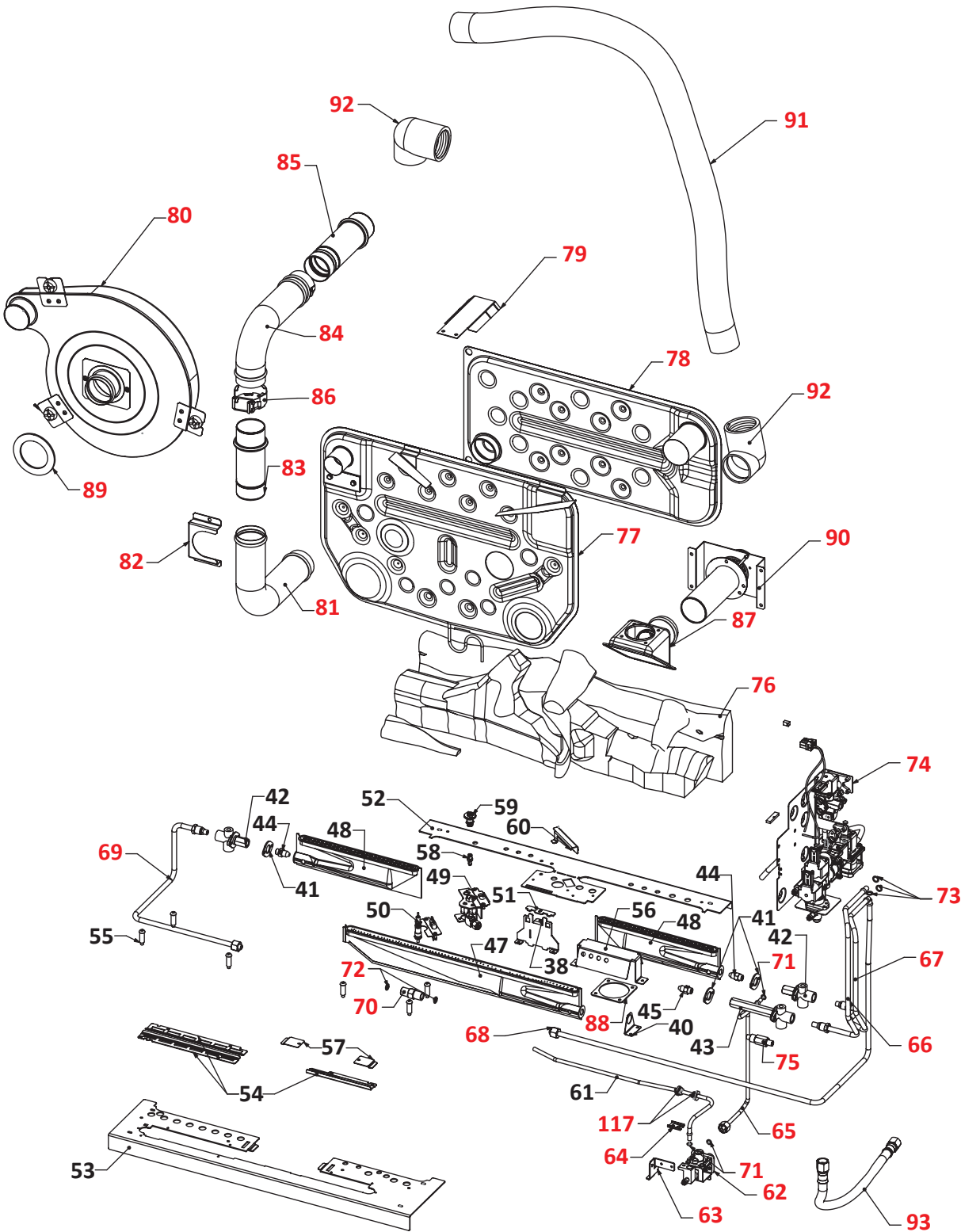


Ref.	Description	Qty.	Part No.
38	Bracket rear burner support	1	10418
40	Bracket injector support	1	10226
41	Injector packing kit	3	10755
42	Injector block kit rear	2	10753
43	Injector block kit front	1	10754
44	Injector 0.9 mm LPG/Propane	2	5436
44	Injector 1.45 mm NG	2	7185
45	Injector 1.75 mm NG	1	5425
45	Injector 1.05 mm LPG/Propane	1	5548
47	Front burner assembly Bray 450 2 x Ø7.5 LPG	1	10277B
47	Front burner assembly Bray 450 + bush NG	1	10275A
48	Rear burner assembly Bray 250 2 x Ø4.5 NG (left and right)	2	10359A
Rear burner assembly LPG serial numbers up to and incl. 14705 (before 30 Jul 2013)			
48	Rear burner assembly Bray 250 2 x Ø8.5 LPG (right only)	1	10359I
48	Rear burner assembly Bray 250 2 x Ø8.0 LPG (left only)	1	10359H
Rear burner assembly LPG serial number starting 14706 (date 30 Jul 2013)			
48	Rear burner assembly Bray 250 2 x Ø8.5 LPG	2	10359I
49	Pilot housing (requires injector)	1	10764
50	Pilot electrode kit (includes double electrode, flame rod and clamps)	1	10772
51	Bracket rear burner clamp	1	10419
52	Panel burner surround rear black	1	10212
53	Panel burner surround front black (manufactured before July 2009)	1	10210
53	Panel burner surround front black (manufactured July 2009 ONWARDS, serial number starting at 13064)	1	10549
54	Aeration plate set LPG	1	10763
54	Aeration plate set NG	1	10762
55	Log pin set (6 x long pins + screws + 4 x short screws)	1	10758
56	Panel air inlet cover	1	10215
57	Expansion plate kit	2	10759
58	Injector LPG 35	1	7873
58	Injector NG 62	1	7795
59	Pilot convertible hood 3-flame	1	10272
60	Bracket cross lighting NG	1	10425
60	Bracket cross lighting LPG	1	10426
61	Gas supply tube pilot B	1	10288
61	Gas supply tube pilot B JP (manufactured 25-Feb 2009 and after, serial number starting at 12845, refer note #16)	1	10430
numbers 62-117 (in red) shown on next page			

Rinnai

Arriva 750 gas fireplace

This diagram is provided to assist you to identify parts if replacement is necessary. Contact your place of purchase or the manufacturer to enquire about parts, availability and/or service.

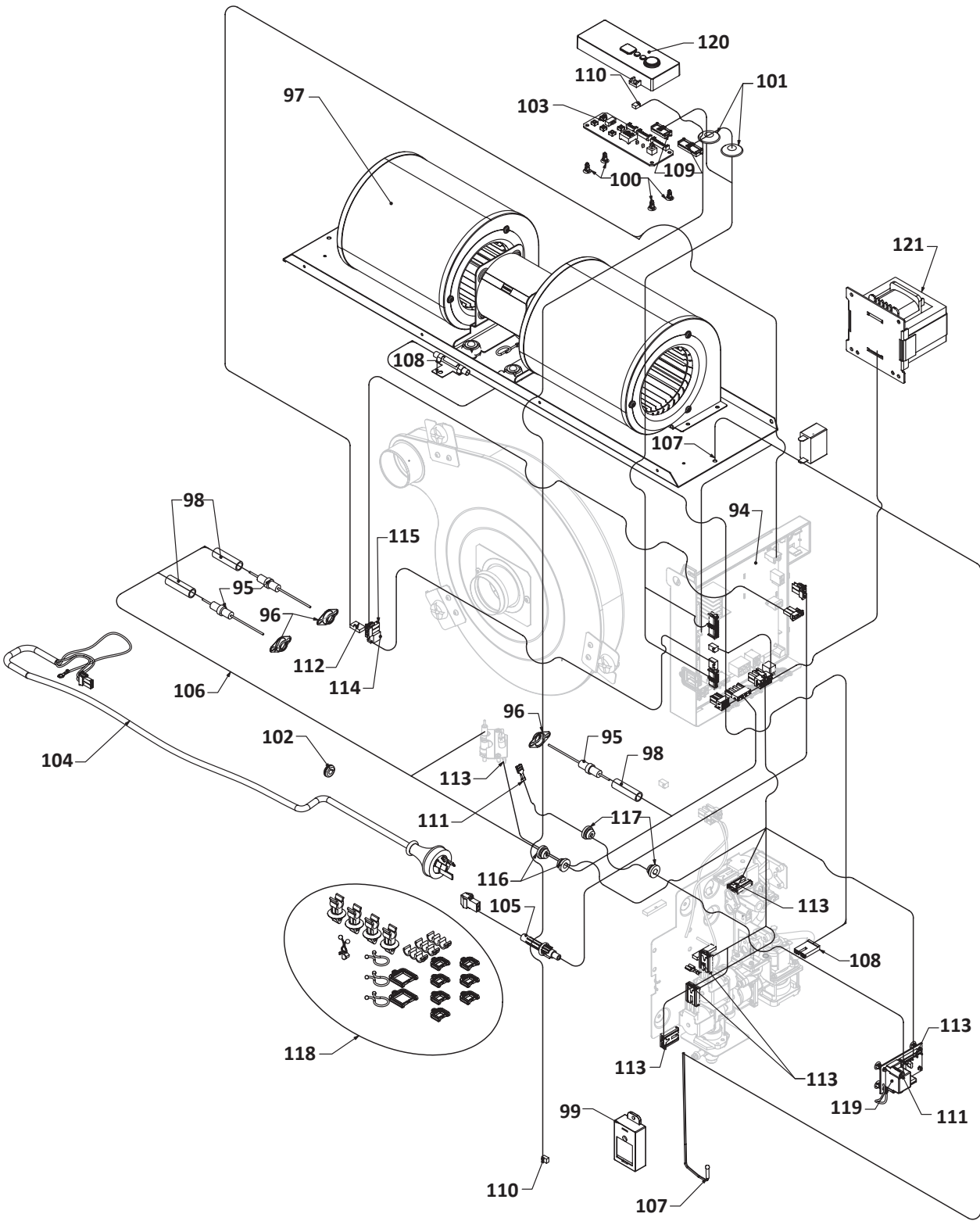


Ref.	Description	Qty.	Part No.
62	Regulator assembly 7~13 mbar NG	1	10789
62	Regulator assembly 15~25 mbar LPG	1	10790
63	Bracket regulator mount	1	10267
64	Gas tube retainer	1	6313
65	Gas supply tube assembly pilot A	1	10287
65	Gas supply tube assembly pilot A JP (manufactured 25-Feb 2009 and after, serial number starting at 12845, refer note #16)	1	10441
66	Gas supply tube front	1	10248
67	Gas supply tube RR	1	10247
68	Gas supply tube assembly RL RH	1	10249A
69	Gas supply tube RL LH	1	10249B
70	Joiner 8 mm	1	10520
71	O-ring kit (includes 8 assorted o-rings and instruction sheet)	1	10756
72	O-ring kit (includes 8 assorted o-rings and instruction sheet)	1	10756
73	O-ring kit (includes 8 assorted o-rings and instruction sheet)	1	10756
74	Gas control sub-assembly (includes wiring harness)	1	10775
75	Test point CC	1	10429
76	Log set (manufactured BEFORE Jul-09)	1	10355
76	Log set (manufactured Jul-09 ONWARDS, serial number starting at 13064)	1	10355US
77	Front heat exchanger assembly (non-serviceable part)	1	-
78	Heat exchanger rear (non-serviceable part)	1	-
79	Bracket heat exchanger top	1	10227
80	Combustion fan assembly	1	10793
81	Tube combustion exhaust lower	1	10341
82	Bracket exhaust tube	1	10345
83	Tube flue slide 50 x 135	1	4326
84	Flue pipe set (was 10270)	1	10313
85	Flue pipe set (was 10279)	1	10313
86	Flue clamp 50 mm	1	4823
87	Air inlet box front	1	10234
88	Packing for air inlet box	1	10271
89	Packing combustion fan	1	10278
90	Air inlet assembly	1	10795
91	Air inlet hose	1	10349
92	Air inlet elbow B 50 x 50	1	4328
93	Hose SS 530 3/8 SAE	1	10330
-	Reducing flare (adaptor for hose 1330, to connect to main gas supply)	1	5074
117	Grommet kit (contains 4 x Ø4 and 2 x 2Ø1.8 holed grommets)	1	10767

Rinnai

Arriva 750 gas fireplace

This diagram is provided to assist you to identify parts if replacement is necessary. Contact your place of purchase or the manufacturer to enquire about parts, availability and/or service.



Ref.	Description	Qty.	Part No.
94	PCB assembly	1	10797
95	Flame rod kit (contains 3 flame rods)	3	10768
96	Flame rod bracket kit (contains 3 brackets)	3	10770
97	Convection fan assembly	1	10791
98	Flame rod sleeve kit (contains 3 sleeves)	1	10769
99	Receiver assembly	1	10798
101	Body plug kit (contains 2 x body plugs and 1 x power cord grommet)	1	10779
102	Body plug kit (contains 2 x body plugs and 1 x power cord grommet)	1	10779
103	PCB display	1	10253
104	Power cord uni control black	1	13042
105	Harness fused power	1	10378
106	Harness flame rod	1	10281
107	Harness room thermistor	1	13034
108	Harness OHS thermal fuse	1	10283
109	Harness control panel	1	10284
110	Harness receiver	1	12656
111	HT lead	1	12657
112	Harness combustion fan	1	10289
-	Capacitor combustion fan	1	10744
113	Harness main	1	10348
114	Harness combustion fan speed	1	10480
115	Harness combustion fan thermistor fly	1	10507
116	Grommet kit (contains 4 x Ø4 and 2 x Ø1.8 holed grommets)	1	10767
117	Grommet kit (contains 4 x Ø4 and 2 x Ø1.8 holed grommets)	1	10767
118	Plastic clip kit	1	10776
119	Sparker kit (includes PCB spacers)	1	10766
120	Control pan cover kit (includes button)	1	10773
121	Transformer	1	10258
Parts not shown in exploded diagram			
-	Remote	1	12201
-	Top panel assembly flat (contains heat flap)	1	10447
-	Top panel assembly radius (contains heat flap)	1	10448
-	Granule pack (common to all fires)	1	2544
-	RHFE750 hex spacers with screws	1	R1871
Flueing related			
-	O-ring (for ESPIPE900, ASPDFK & ASPKIT03)	1	4350
-	Spacer (for ESPIPE900 & ASPDFK)	1	4351
-	Harness thermistor combustion fan (OH2)	1	13559