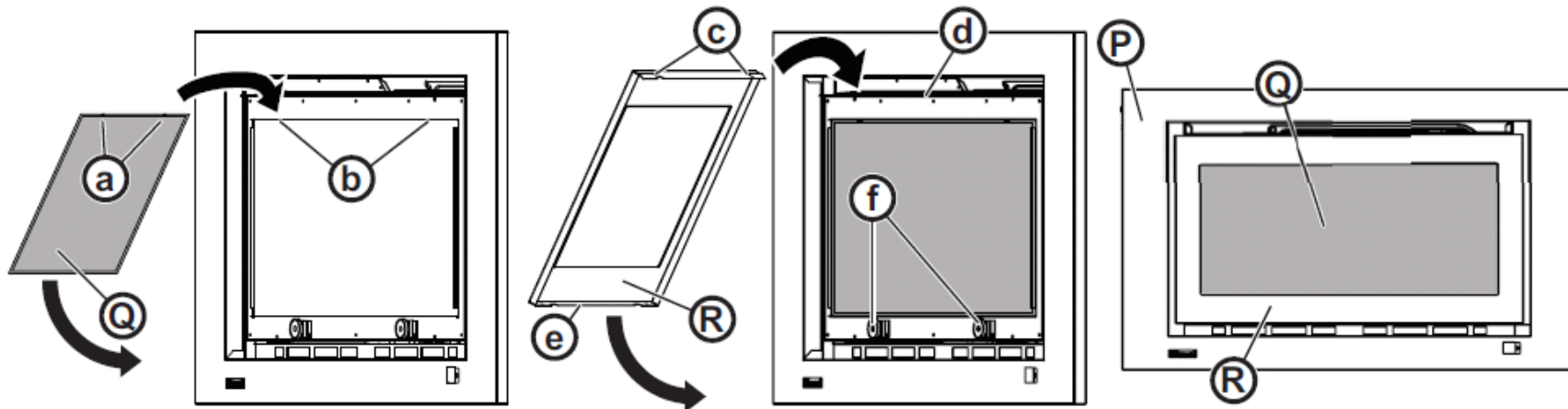


Rinnai

INSTALLING THE DRESS GUARD & INNER FASCIA PANEL

1. Using slots **(a)** hang the mesh dress guard **(Q)** onto the tabs **(b)** of the of combustion chamber glass frame.
2. Mount the inner fascia **(R)** to the engine by hooking the tabs of the inside top of the inner fascia **(c)** to the top lip of the combustion chamber frame **(d)**.



3. Rotate the bottom of the inner fascia **(e)** in towards the engine body allowing the magnets **(f)** to secure both the inner fascia and the dress guard to the heater engine.