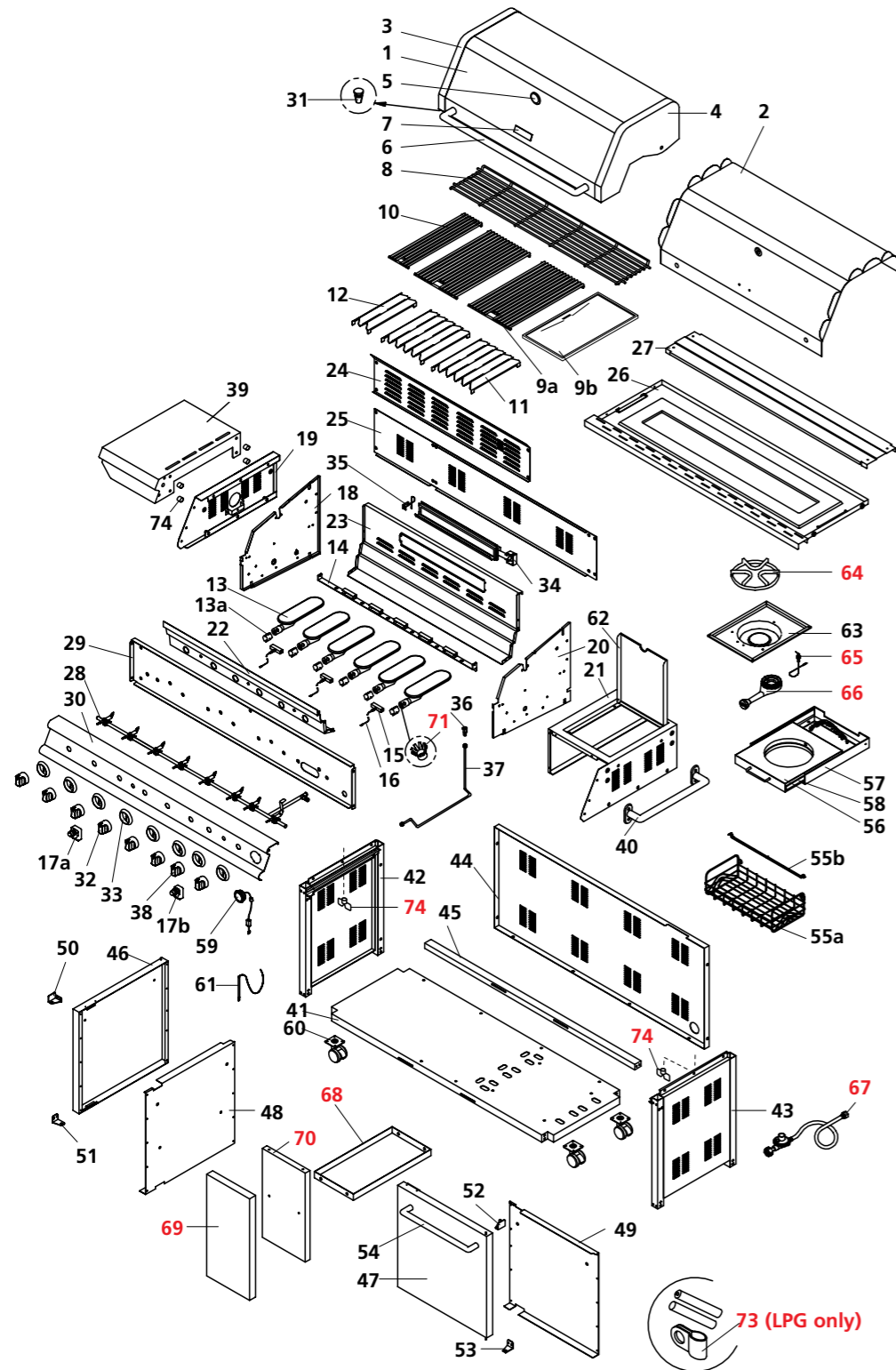


# Elite 8 burner (2003) BBQ

This diagram is provided to assist you to identify parts if replacement is necessary. Contact your place of purchase or the manufacturer to enquire about parts, availability and/or service.



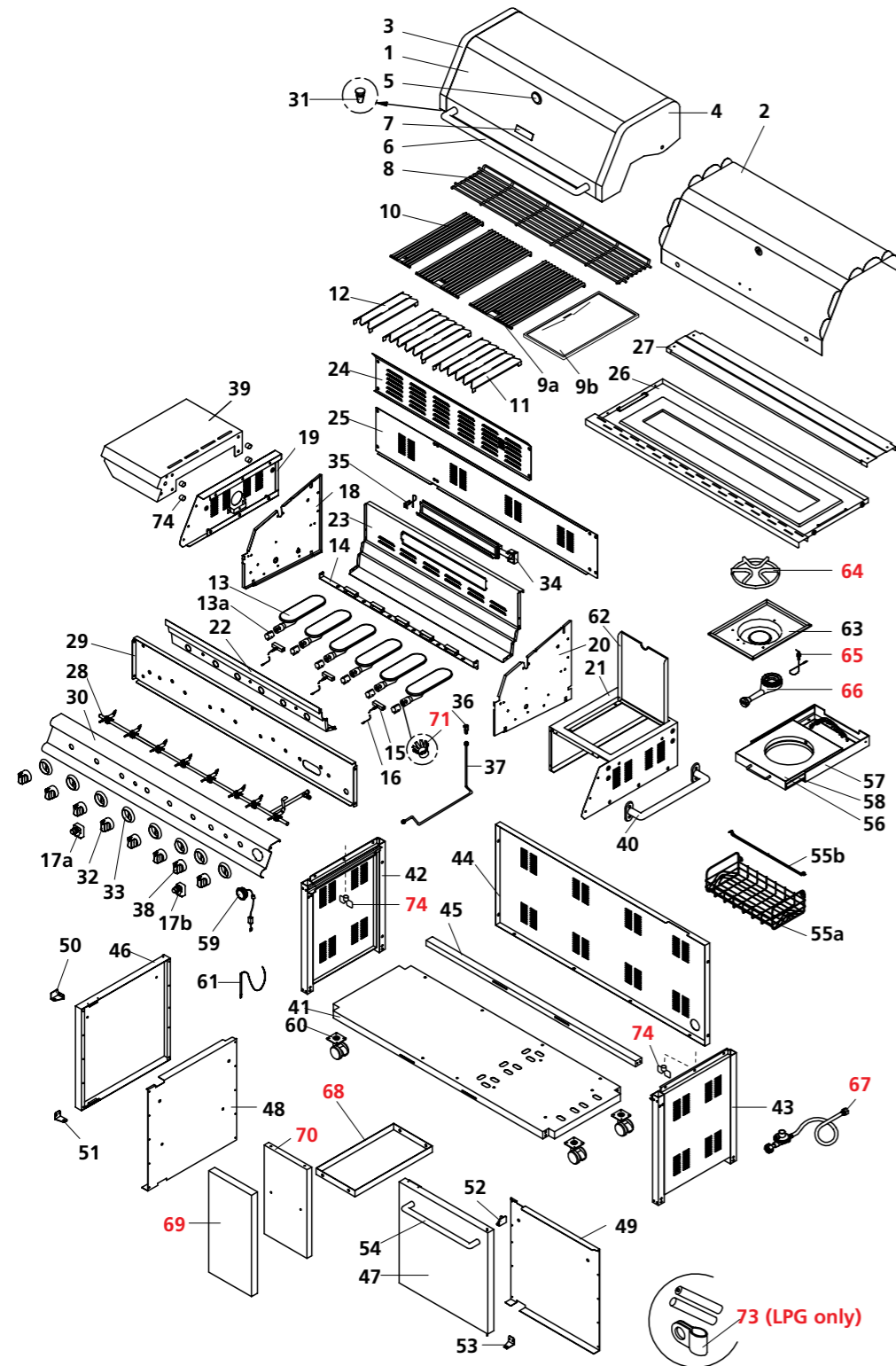
Ref.	Description	Qty.	Part No.
1	Stainless steel hood	1	17174
2	Stainless steel hood trim plate	1	17175
3	Hood side panel left	1	17176
4	Hood side panel right	1	17177
5	Temperature gauge	1	4649
6	Hood handle	1	17178
7	Rinnai badge	1	17104
8	SS secondary cooking rack	1	17180
9a	Stainless steel cooking grill	2	17181
9b	Hot plate ceramic coating	2	ABBQ2100
10	SS cooking grid 4 " size	1	17183
11	SS flame tamer	2	17184
12	SS flame tamer 4 " size	1	17185
13	Main burner	6	17186
14	Main burner bracket	1	17188
15	Gas collector box with electrode	3	17189
16	Ignition wire set	1	17190
17a	Electric ignitor - 4 ports	1	18107
17b	Electric ignitor - 2 ports	1	17192
18	Body panel left	1	17193
19	Body trim panel left	1	17194
20	Body panel right	1	17195
21	Body trim panel right	1	17196
22	Body panel front	1	17197
23	Body panel rear	1	17198
24	Wind shield a	1	17199
25	Wind shield b	1	17200
26	Pull out grease draining tray	1	17179
27	Grease draining tray heat shield	1	17201
28	Gas manifold / valves assy. LPG	1	17202
28	Gas manifold / valves assy. NG	1	17203
29	Control panel heat shield	1	17204
30	Control panel LPG	1	17205
31	Hood stopper	2	17207
32	Control knob main - nickel	7	17208
32	Control knob main - black	7	17208B
33	Control knob seat	8	17209

Ref.	Description	Qty.	Part No.
34	Rotisserie burner assy.	1	17210
35	Electrode for rotisserie burner	1	17211
36	Injector for rotisserie burner NG 1.50 mm	1	17213
36	Injector for rotisserie burner LPG 0.90 mm	1	17212
36a	Injector for main burner LPG 0.96 mm	1	17214
36b	Injector for side burner LPG 1.05 mm	1	17216
36b	Injector for side burner NG 1.75 mm	1	17217
37	Gas tube for rotisserie burner	1	17218
38	Control knob for rotisserie - nickel	1	17219
38	Control knob for rotisserie - black	1	17219B
39	Side shelf left	1	17220
40	Trolley side handle	1	17221
41	Bottom shelf	1	17222
42	Trolley side panel left	1	17223
43	Trolley side panel right	1	17224
44	Trolley rear panel	1	17225
45	Door bracket	1	17226
46	Door panel left	1	17227
47	Door panel right	1	17228
48	Door trim plate left	1	17229
49	Door trim plate right	1	17230
50	Door axle bracket top left	1	17231
51	Door axle bracket left bottom	1	17232
52	Door axle bracket right top	1	17233
53	Door axle bracket right bottom	1	17234
54	Stainless steel door handle	2	17235
55a	Wire basket	1	17236
55b	Division wire for wire basket	1	17237
56	Cylinder pull-out tray LPG	1	17238
57	Bracket for cylinder pull-out tray LPG	1	17239
58	Cylinder tray slide	1	17240
59	Fuel gauge display with ring assy. LPG	1	17241
60	Caster	4	17242
61	Manual lighting stick	1	17243
62	Stainless steel side burner lid	1	17244
63	Stainless steel side burner inner	1	17245

Numbers 64-74 (in red)—on page 2

# Elite 8 burner (2003) BBQ

This diagram is provided to assist you to identify parts if replacement is necessary. Contact your place of purchase or the manufacturer to enquire about parts, availability and/or service.



Ref.	Description	Qty.	Part No.
64	Pot support	1	17246
65	Side burner electrode	1	17247
66	Burner side assembly	1	1432
67	Regulator and hose assembly	1	17249
68	Division panel	1	17250
69	Decorative panel	1	17251
70	Decorative panel inside	1	17252
71	Heat insulating ring for main burner valve	6	17253
73	Wire fastener LPG	1	17255
74	Side shelf heat insulating spacer	4	-
<b>Not shown in exploded diagram</b>			
-	Left hand door assembly	1	17301
-	Right hand door assembly	1	17302
-	Wok handle	1	1343
-	Hardware pack	1	17256
-	Rotisserie handle	1	1291
-	Rotisserie prong	1	1293
-	Rotisserie motor battery 3 Volt	1	1290
-	Rotisserie bracket	1	1289
-	Rotisserie rod (2 pieces, older model)	1	15814
-	Rotisserie rod (1 piece, new model)	1	15818
-	BBQ cover	1	ABBQ2012