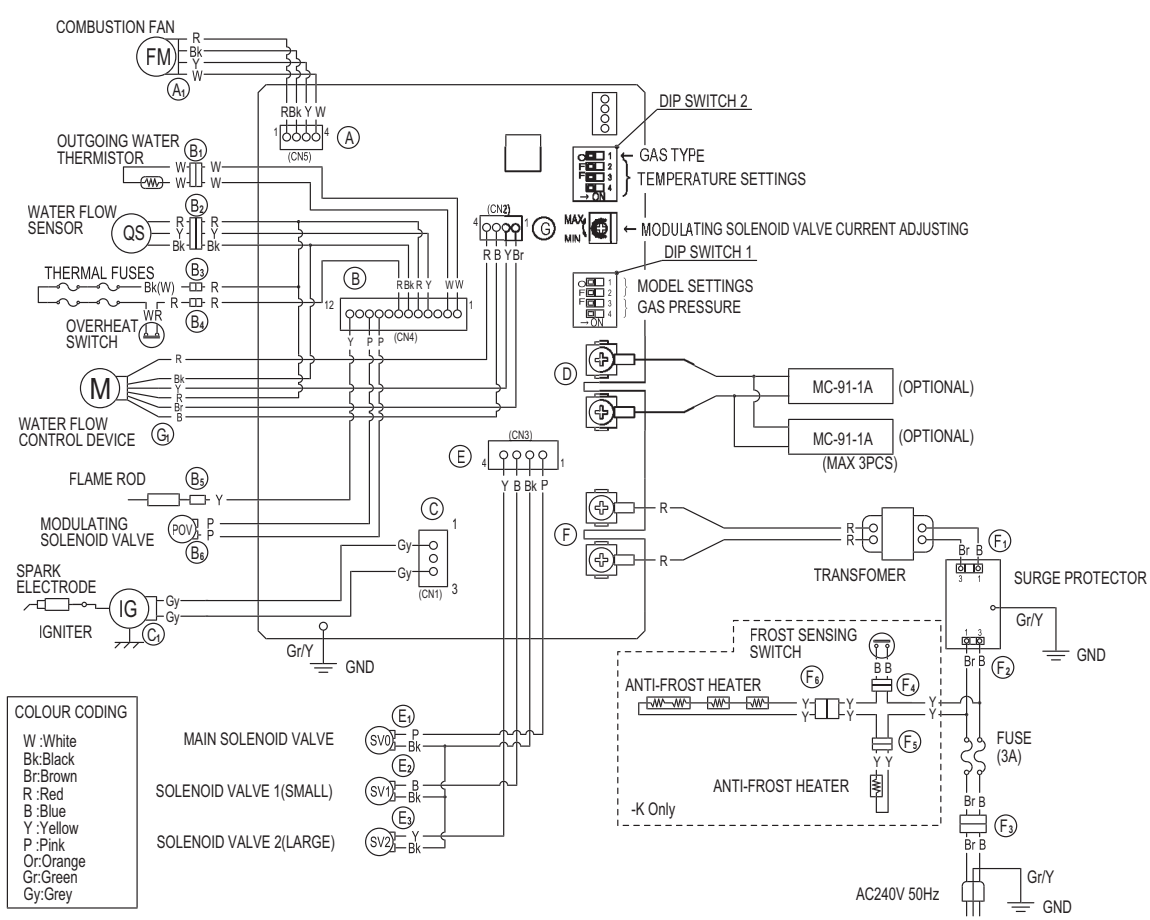


CIRCUIT DIAGRAM



DIAGNOSTIC POINTS

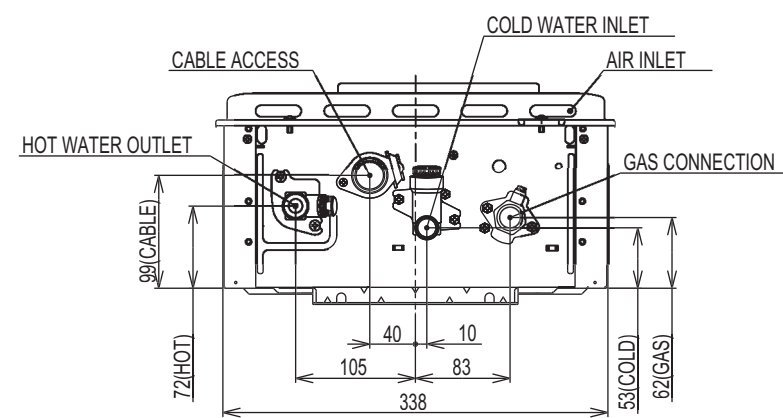
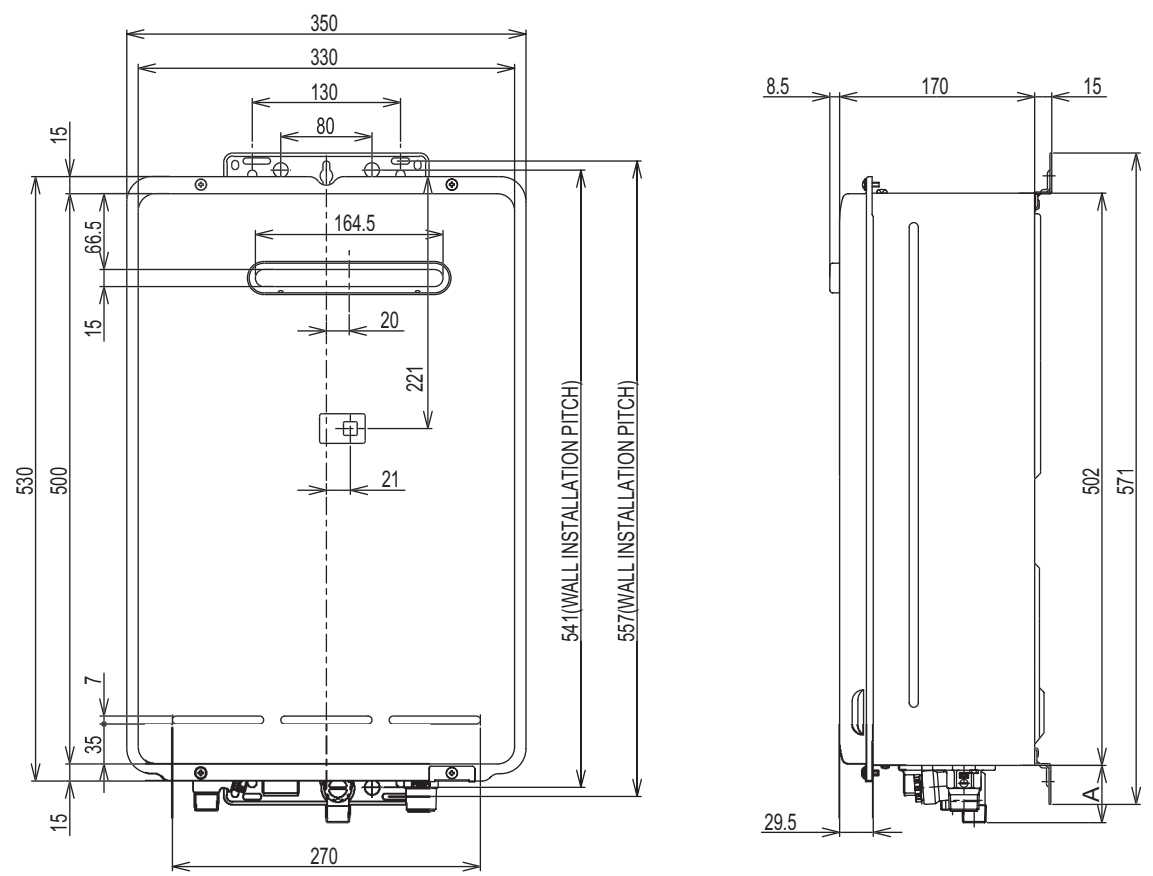
FLUID CHART No.	COMPONENT	MEASUREMENT POINT	WIRE COLOUR	NORMAL VALUE	A NOTE
1	SURGE PROTECTOR	F ₃	B-Br	AC207-264V	
2	WATER FLOW CONTROL DEVICE	G ₁	R(CN2-NO.4)-B	± DC11-13V (ONLY WHEN OPERATING)	OPERATE ELECTRICITY
			R(CN4-NO.5)-Bk	DC11-13V	CONTROL ELECTRICITY
			Bk-Y	BELOW DC1V(LIMITER ON)	FULL OPEN POSITION
3	REMOTE CONTROL	D (TERMINAL)	Bk-Br	DC4-6V(LIMITER OFF)	FULL OPEN POSITION
			Bk-Br	DC4-6V(LIMITER OFF)	FULL CLOSE POSITION
4	WATER FLOW SENSOR	B ₂	R-Bk GND	DC11-13V	(ONZ ALUMIN (33PZ) OVER 100PULSE/MIN OFF (7L/MIN)(20HZ) BELOW 130PULSE/MIN
5	COMBUSTION FAN	A ₁	R-Bk GND	DC4-7V(PULSE 20-320HZ)	
6	FLAME ROD	B ₅	Y-FlAME ROD	OVER DC1μA	FLAME CONDITION
7	MODULATING SOLENOID VALVE	B ₆	P-P	DC2-15V	65-85 Ω
8	OUTGOING WATER THERMISTOR	B ₁	W-W	15°C : 114-14.0 k Ω	
				30°C : 64-7.8 k Ω	
				45°C : 3.8-4.5 k Ω	
				60°C : 2.2-2.7 k Ω	
9	THERMAL FUSES	B ₃	R-W	BELOW 1 Ω	
			B ₄	R-Bk	BELOW 1 Ω
10	IGNITER	C ₁	Gy-Gy	AC90-110V	
11	MAIN SOLENOID VALVE	E ₁	P-Bk	DC80-100V	1.7-2.1 k Ω
12	SOLENOID VALVE 1 (SMALL)	E ₂	B-Bk	DC80-100V	1.7-2.0 k Ω
13	SOLENOID VALVE 2 (LARGE)	E ₃	Y-Bk	DC80-100V	1.7-2.1 k Ω

TRANSFORMER VOLTAGES AND RESISTANCES

CN	WIRE COLOUR	NORMAL VALUE
F	R-R	AC90-110V 1F-13 Ω
F ₁	B-Br	31-36 Ω

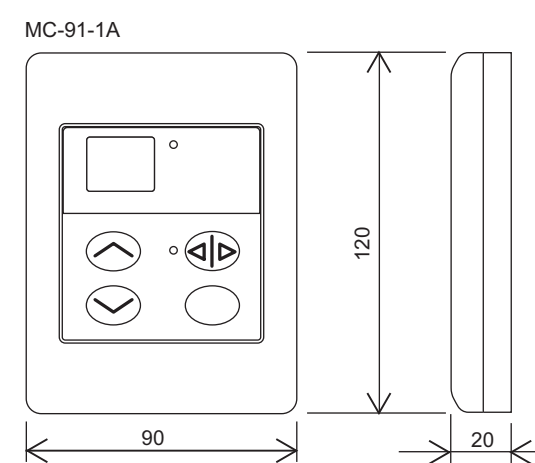
5

DIMENSIONS OF REU-V1616W SERIES



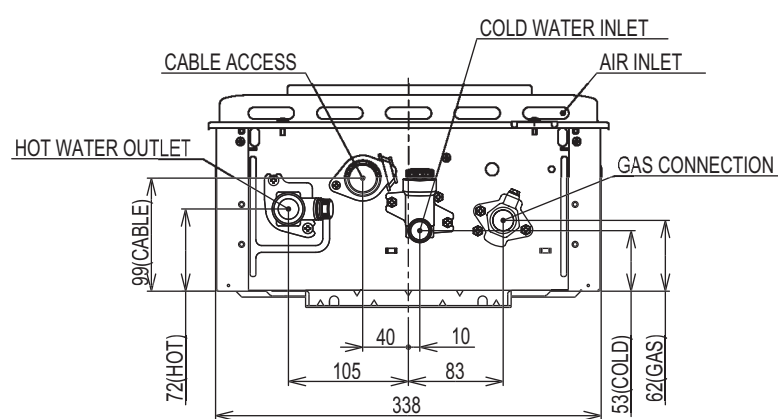
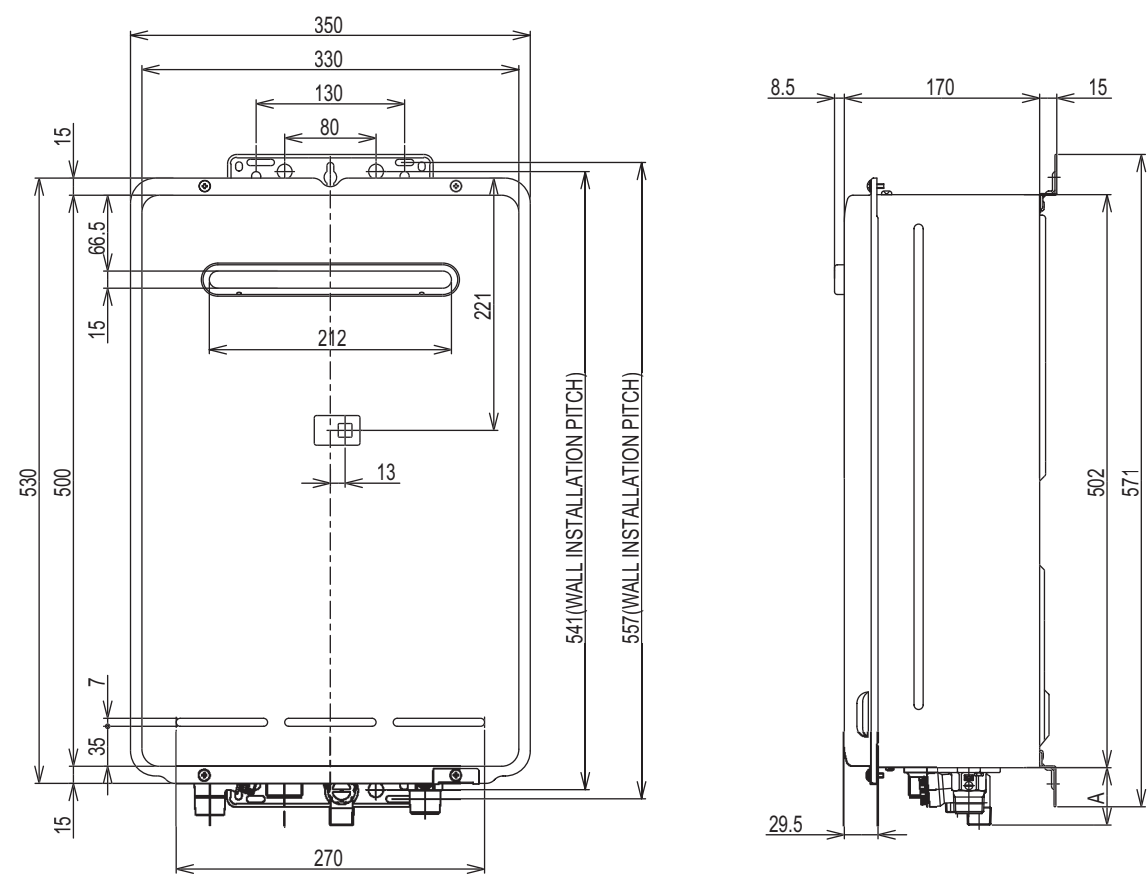
	A DIMENSION (mm)	CONNECTION
GAS	40	R $\frac{3}{4}$ (20mm)
COLD	50	R $\frac{1}{2}$ (15mm)
HOT	39	R $\frac{1}{2}$ (15mm)
CABLE ACCESS	26	—

REMOTE CONTROLLER DIMENSIONS



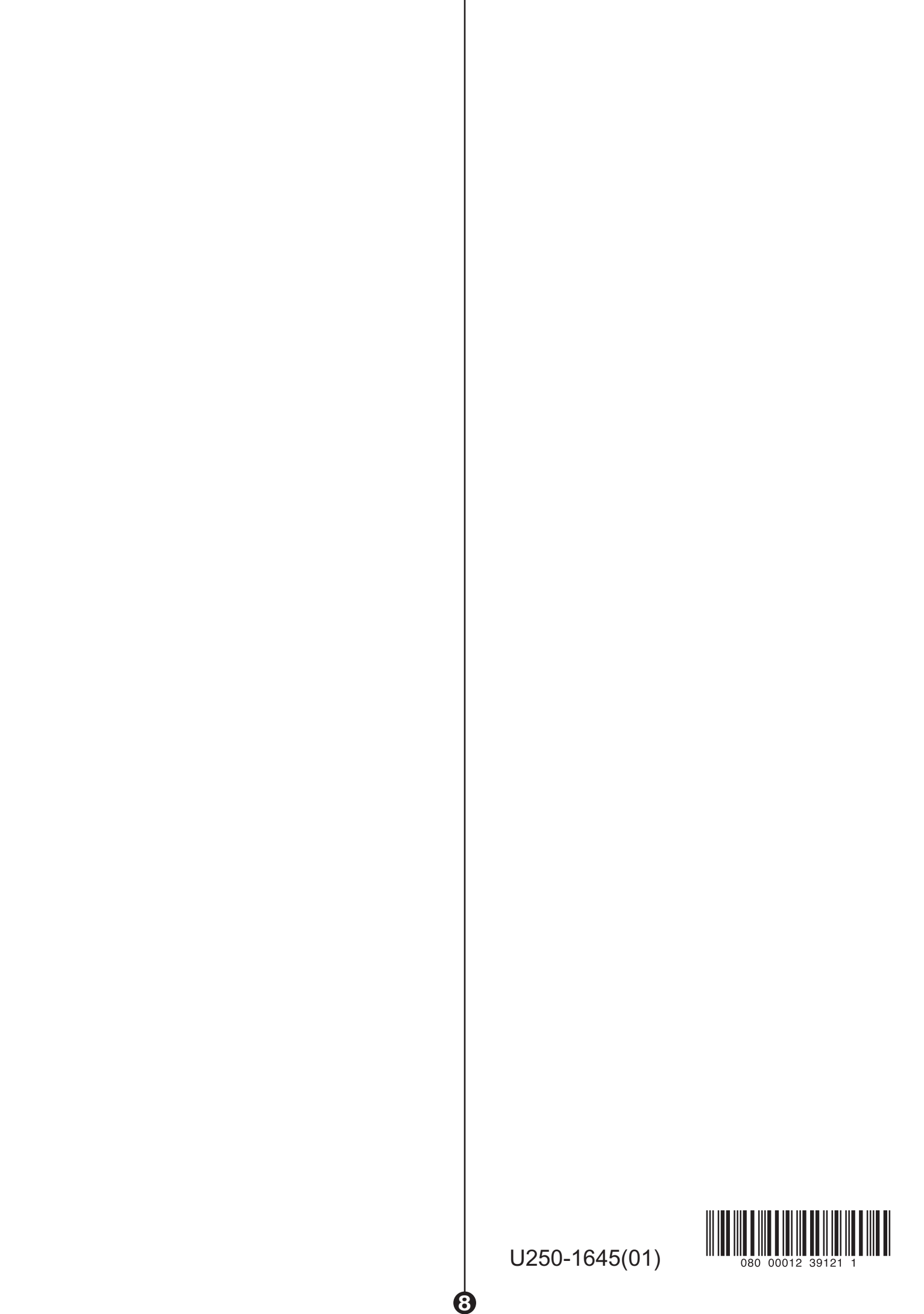
6

DIMENSIONS OF REU-V2020W/V2018W SERIES



A DIMENSION		
	A DIMENSION (mm)	CONNECTION
GAS	40	R $\frac{3}{4}$ (20mm)
COLD	50	R $\frac{1}{2}$ (15mm)
HOT	39	R $\frac{1}{2}$ (15mm)
CABLE ACCESS	26	—

7



8

