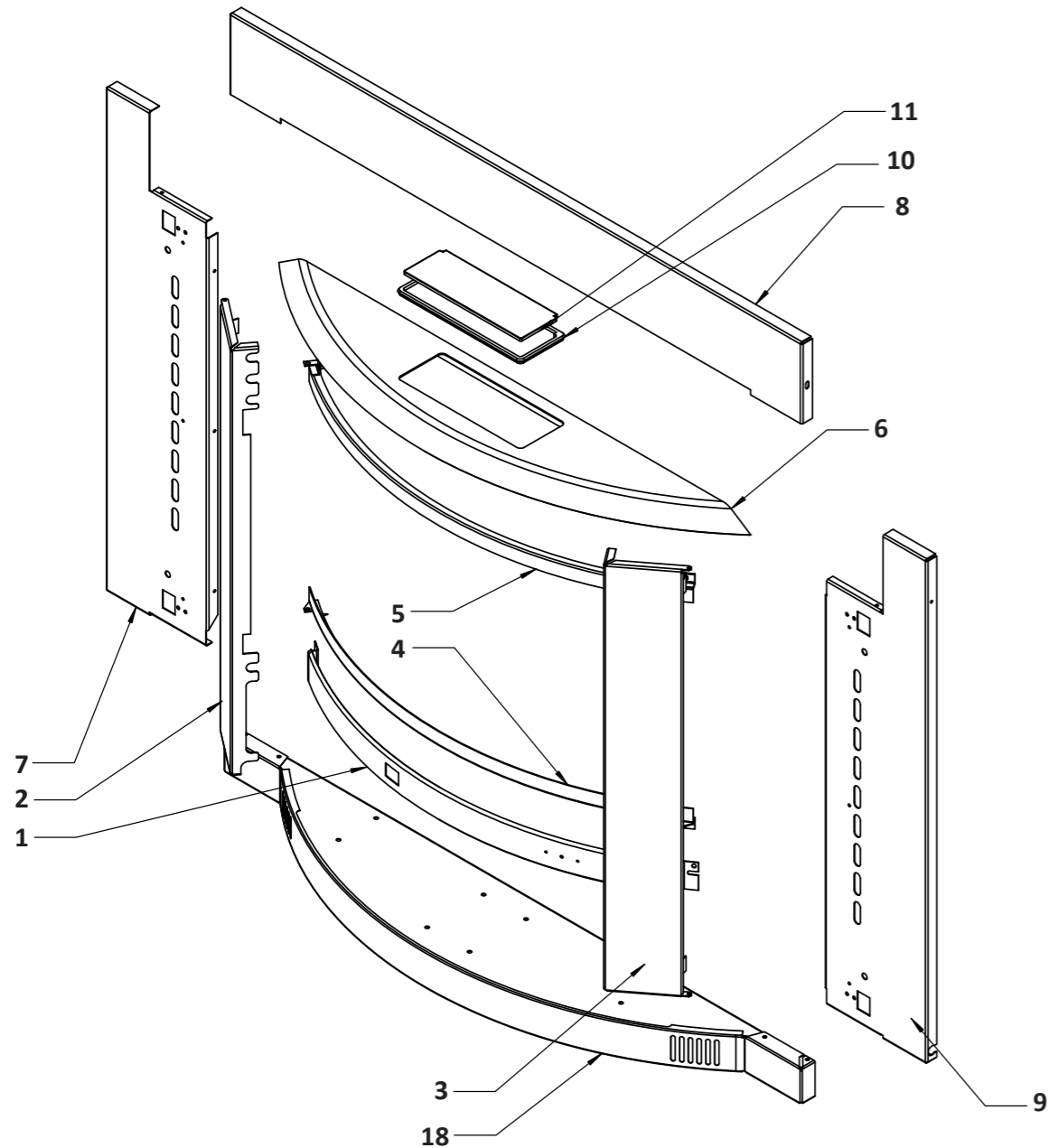


# Timberflame Radius ETR (IB35ETR) gas fireplace

This diagram is provided to assist you to identify parts if replacement is necessary. Contact your place of purchase or the manufacturer to enquire about parts, availability and/or service.

## Radius ETR outer painted panels



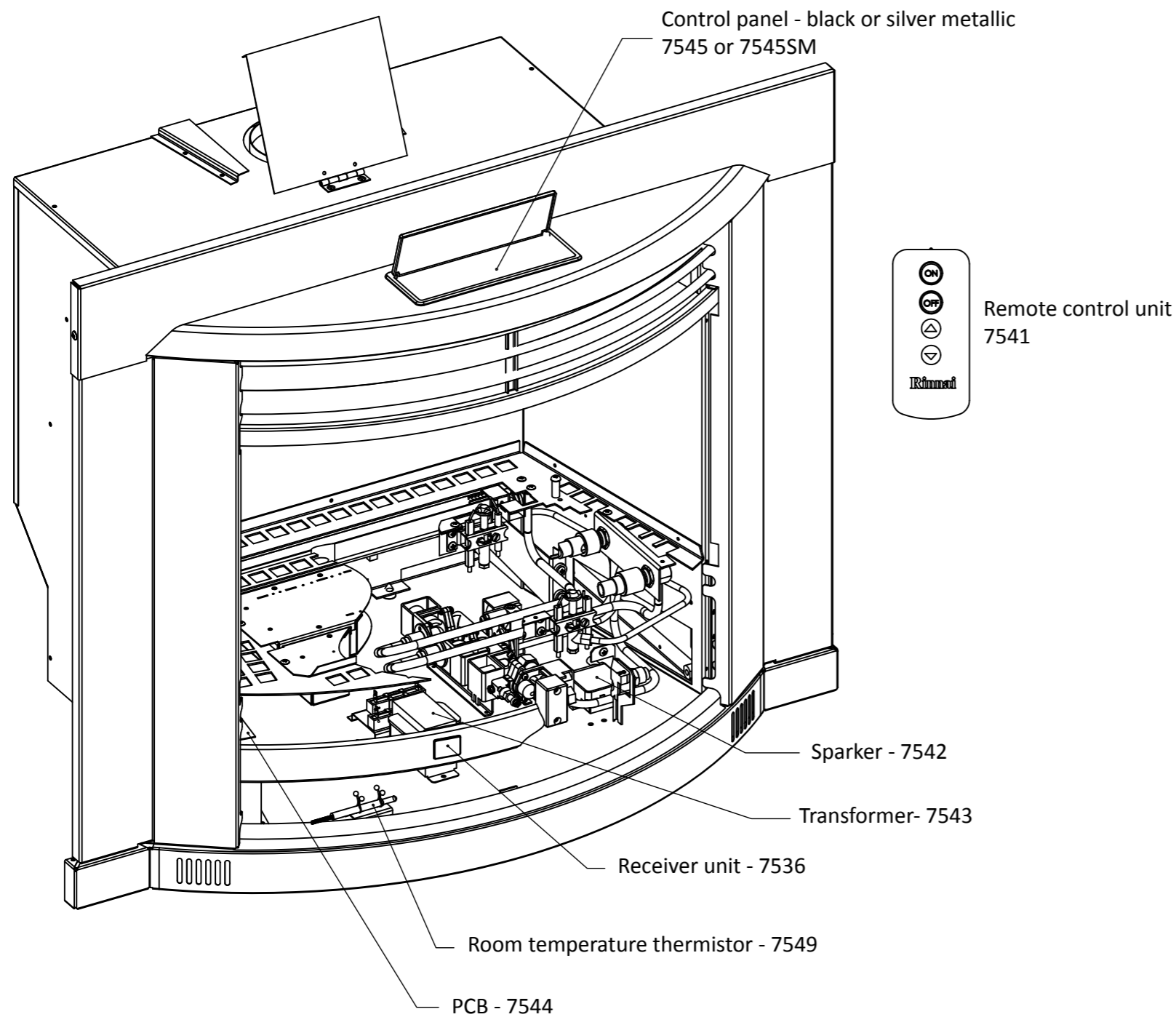
Ref.	Description	Qty.	Part No.
1	Front panel - silver metallic	1	7616SM
	Front panel - black satin (viper)	1	7616V
2	Door LH - silver metallic	1	7193SM
	Door LH - black satin (viper)	1	7193V
3	Door RH - silver metallic	1	7194SM
	Door RH - black satin (viper)	1	7194V
4	Glass retainer bottom	1	7037
	Glass retainer bottom - silver	1	7056S
5	Glass retainer top	1	7033
	Glass retainer top - silver	1	7057S
6	Top panel - silver metallic	1	7615SM
	Top panel - satin black (viper)	1	7615V
7	Surround LH - silver metallic	1	7191SM
	Surround LH - satin black (viper)	1	7191V
8	Top surround panel - silver metallic	1	7190SM
	Top surround panel - satin black (viper)	1	7190V
9	Surround RH - silver metallic	1	7192SM
	Surround RH - satin black (viper)	1	7192V
10	Control unit assembly - silver metallic	1	7545SM
	Control unit assembly	1	7545
11	Control panel lid - silver metallic	1	4985SM
	Control panel lid	1	4985
18	Plinth zero clearance - silver metallic	1	R1783-1SM
	Plinth zero clearance - satin black (viper)	1	R1783-1V
-	Plint kit satin black (viper)	1	AAC1783B
<b>Paint information</b>			
	Touch-up paint silver	1	R1880
	Touch-up paint - satin black (viper)	1	R1881

Paint supplier and code information
Silver powder coat: Rahasia silver, SP5182
Old silver: Rinnai silver, Orica 95496618
Old matt black: Black metallic, Orica 95483276
If you are seeking painted parts for older silver models (masque silver (S) and silver powder coat (SP)), please contact Rinnai Customer Services on 0800 746 624. They will be able to check stock availability for you.

# Timberflame Radius ETR (IB35ETR) gas fireplace

This diagram is provided to assist you to identify parts if replacement is necessary. Contact your place of purchase or the manufacturer to enquire about parts, availability and/or service.

## Radius ETR electrical components - front



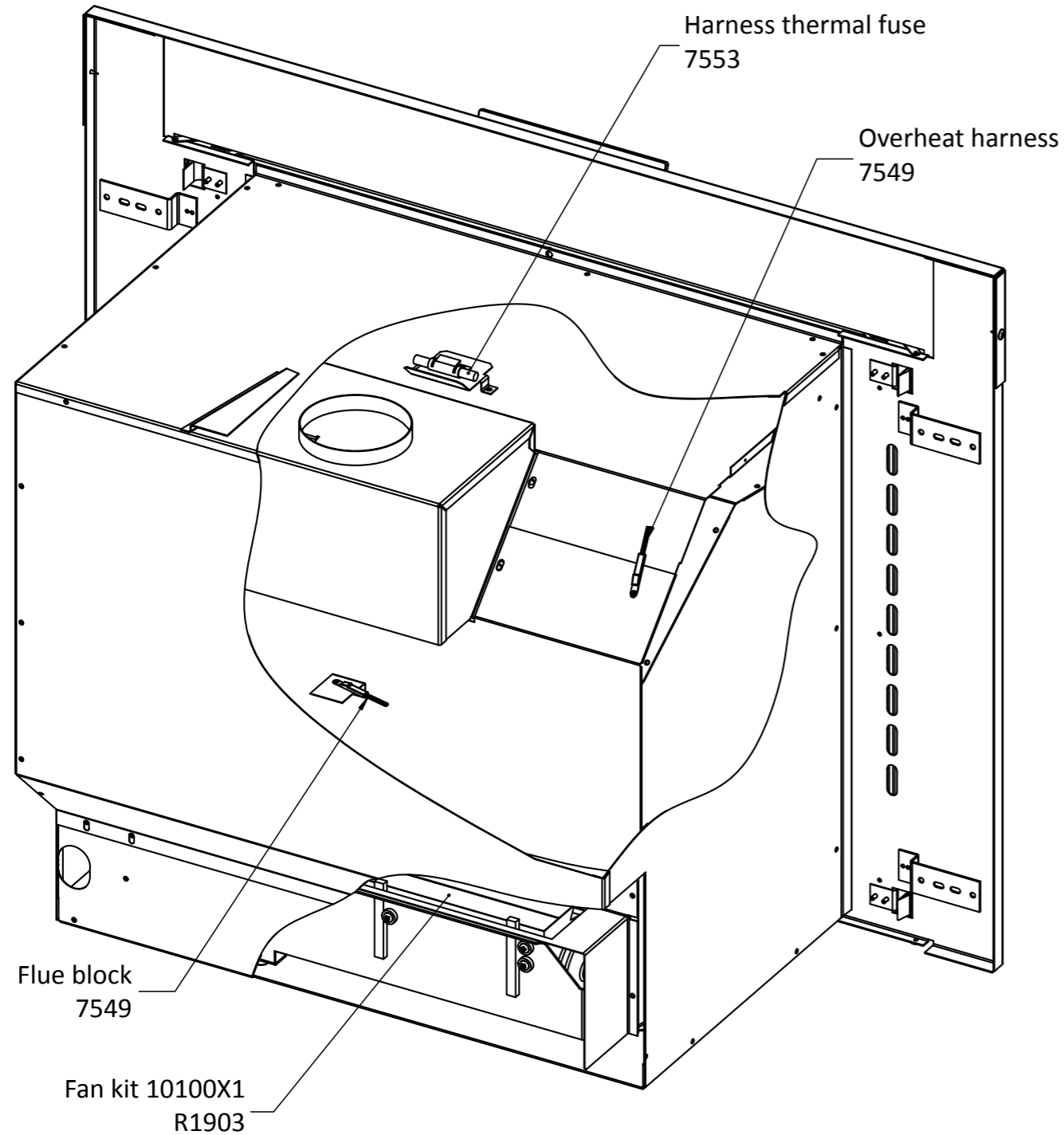
### Items not shown in exploded diagram

Description	Qty.	Part No.
Power cord uni control	1	13042
Universal high tension lead	1	R7205
Main harness	1	10303

# Timberflame Radius ETR (IB35ETR) gas fireplace

This diagram is provided to assist you to identify parts if replacement is necessary. Contact your place of purchase or the manufacturer to enquire about parts, availability and/or service.

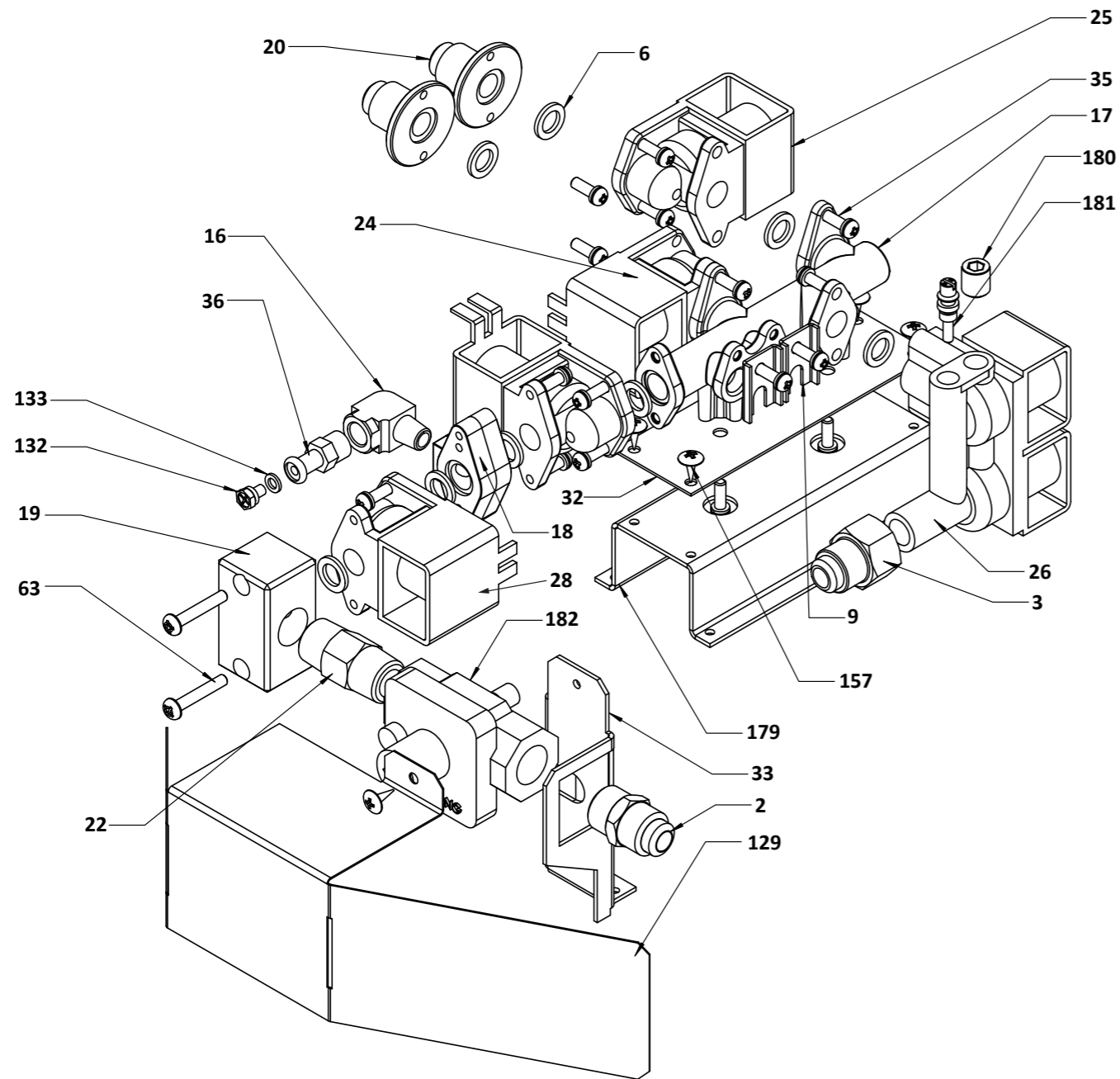
## Radius ETR electrical components - back



# Timberflame Radius ETR (IB35ETR) gas fireplace

This diagram is provided to assist you to identify parts if replacement is necessary. Contact your place of purchase or the manufacturer to enquire about parts, availability and/or service.

## Radius ETR manifold assembly



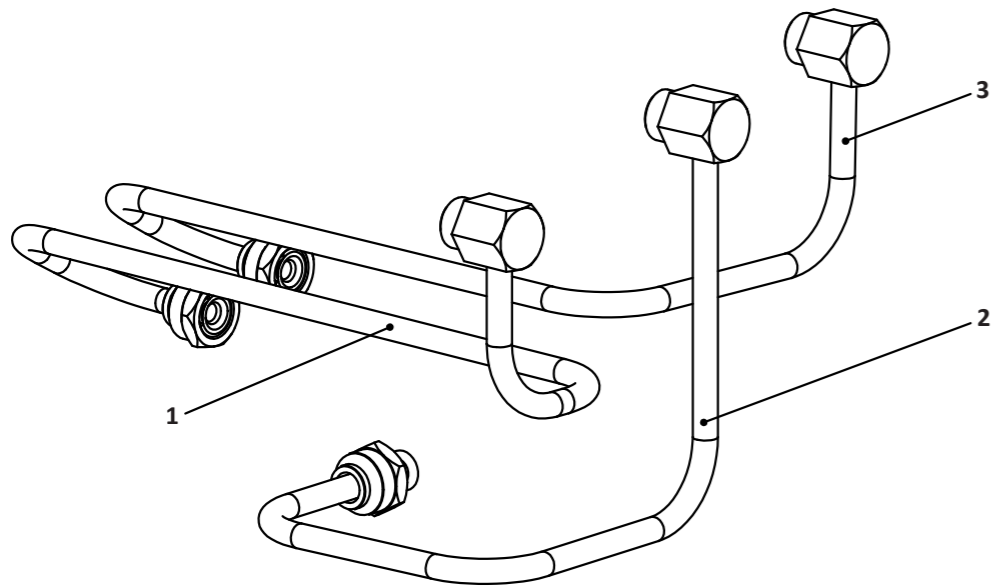
Ref.	Description	Qty.	Part No.
2	Union body	1	7031
3	Union 3/8	1	7973
6	Packing	9	6121
9	Gas tube retainer	2	6313
16	Elbow 1/8 inch male and female	1	7452
17	Manifold	1	7454
18	Manifold adaptor	1	7455
19	Manifold elbow	1	7456
20	Manifold tube adaptor	2	7974
22	Hex nipple 3/8 inch by 15 mm	1	7523
24	Solenoid	1	7558
25	Solenoid	1	7559
26	Manifold tube adaptor ETR	1	7560
28	Solenoid	1	7555
32	Gas manifolding mounting plate	1	7611
33	Regulator support	1	7614
35	Screw	20	9070
36	Pressure test point	1	9992
63	Screw	2	9076
129	Protective shield	1	7617-1
132	Test point screw	1	9994
133	Test point packing	1	9995
179	Manifold mounting bracket	1	-
180	Plug	1	6243
181	Bypass screw LPG	1	7533
	Bypass screw NG	1	7529
182	Regulator NG	1	7632
	Regulator LPG	1	7633

# Timberflame Radius ETR (IB35ETR) gas fireplace

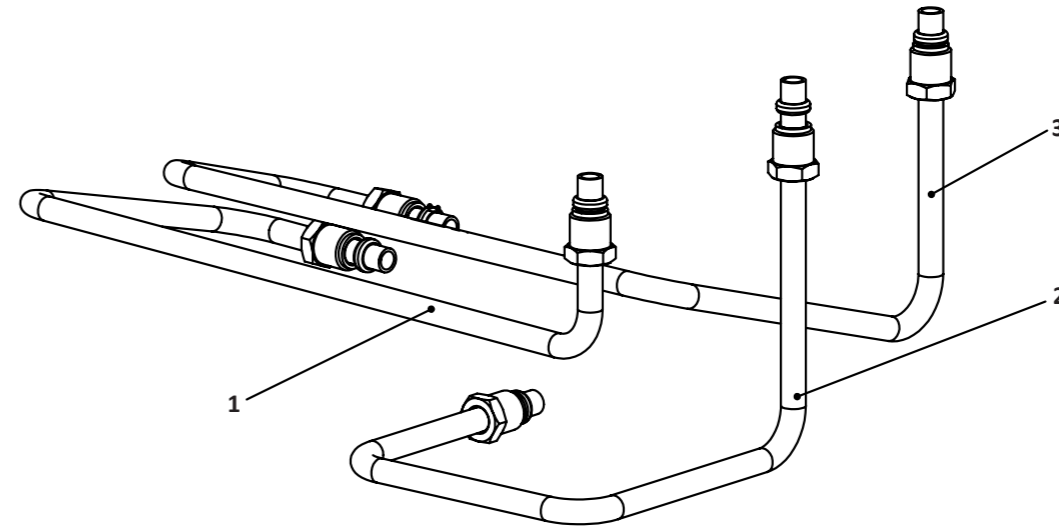
This diagram is provided to assist you to identify parts if replacement is necessary. Contact your place of purchase or the manufacturer to enquire about parts, availability and/or service.

## Burner supply tubes

IB35ETR up to 4th May 2004. Serial number: 8566



IB35ETR from 5th May 2004. Serial number: 8567



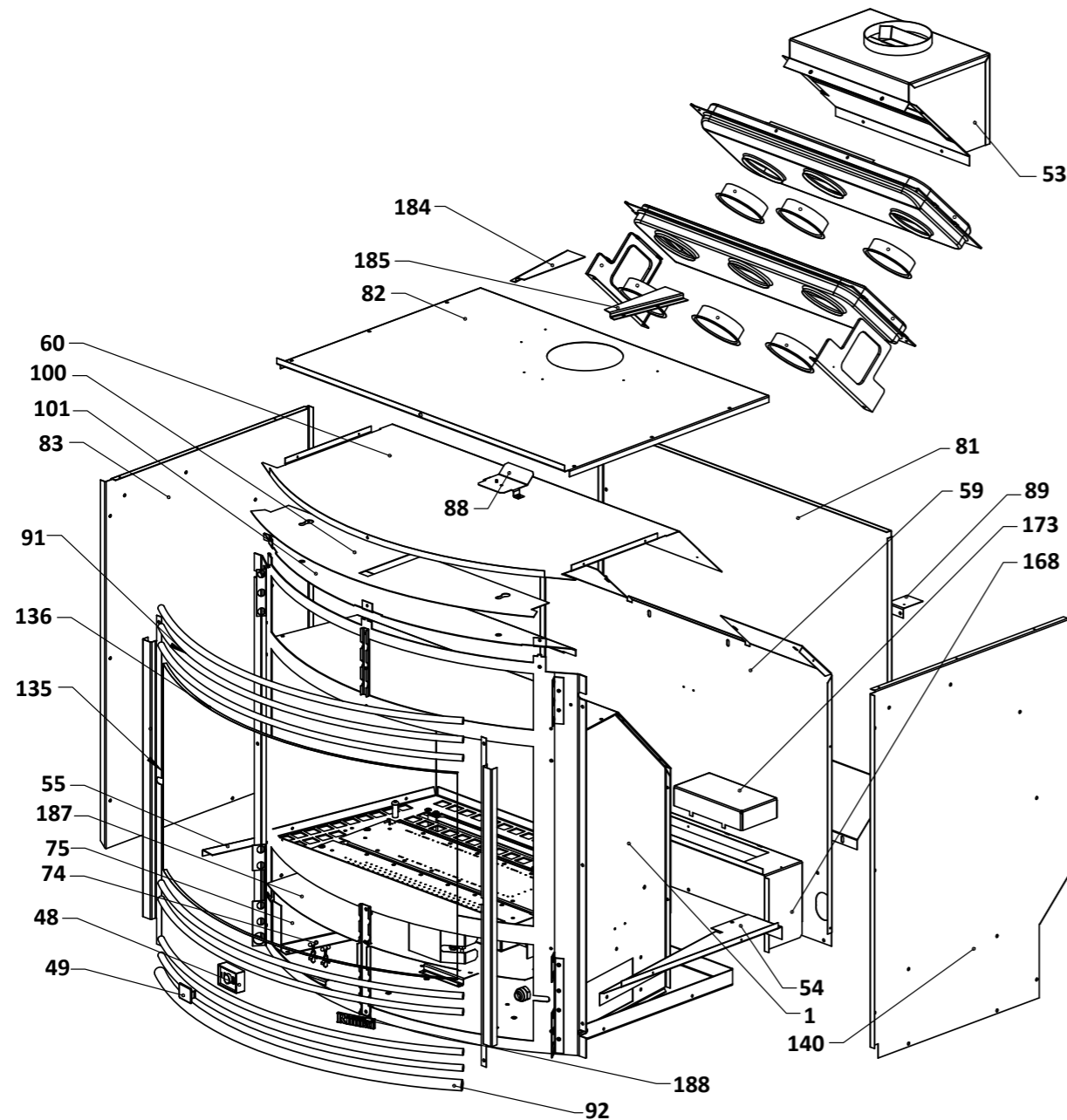
Ref.	Description	Qty.	Part No.
1	Tube gas supply assembly IB35ETRA	1	7580
2	Tube gas supply assembly IB35ETRB	1	7585
3	Tube gas supply assembly IB35ETRC	1	7590
<b>Not mapped</b>			
-	O-ring pilot	2	6308
-	Rear pilot tube	1	7595
-	Front pilot tube	1	7594

Ref.	Description	Qty.	Part No.
1	Tube gas supply assembly IB35ETRA	1	7933
2	Tube gas supply assembly IB35ETRB	1	7932
3	Tube gas supply assembly IB35ETRC	1	7931
<b>Not mapped</b>			
-	O-ring pilot	2	6308
-	Rear tube pilot	1	7595
-	Front tube pilot	1	7594

# Timberflame Radius ETR (IB35ETR) gas fireplace

This diagram is provided to assist you to identify parts if replacement is necessary. Contact your place of purchase or the manufacturer to enquire about parts, availability and/or service.

## Radius ETR panels

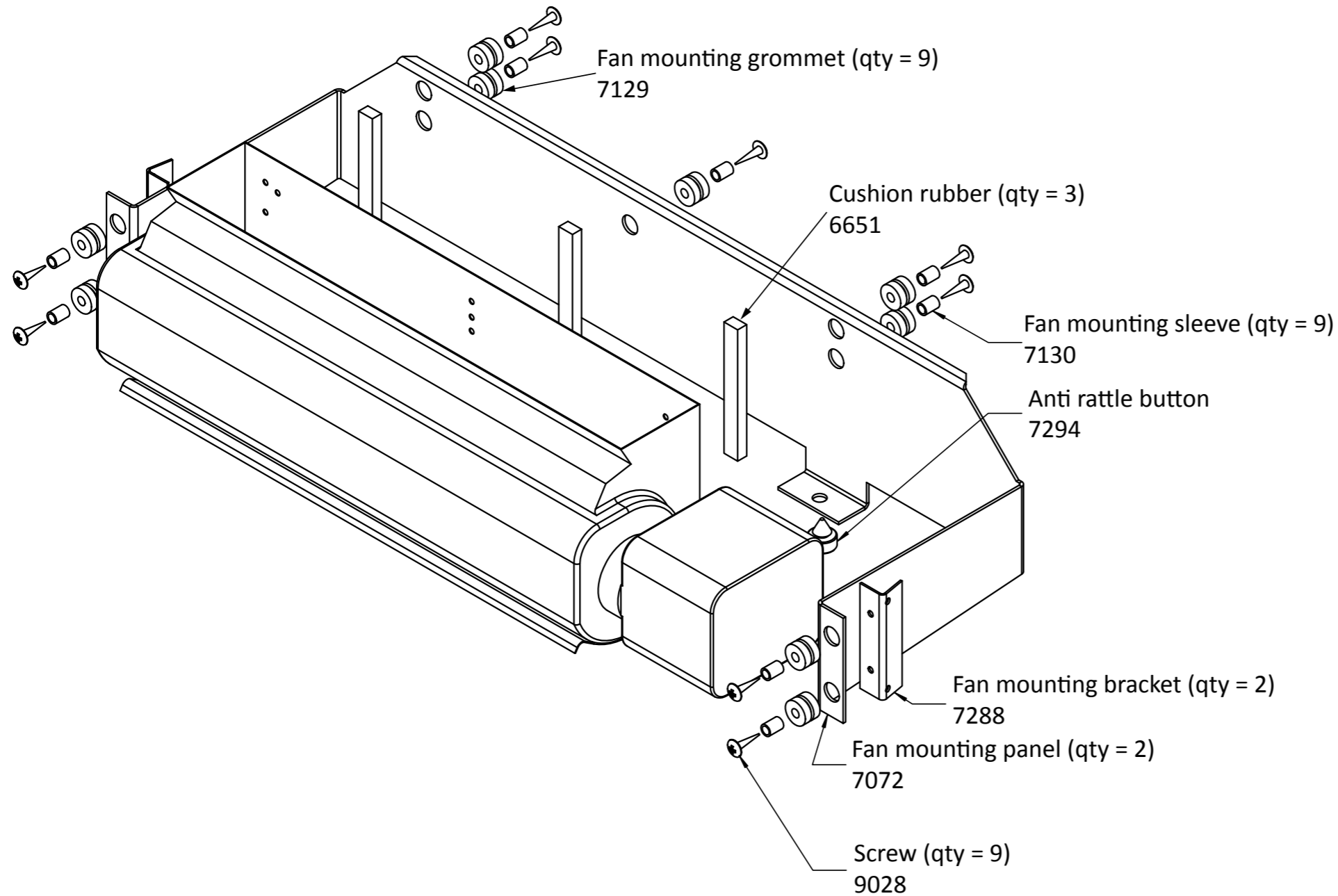


Ref.	Description	Qty.	Part No.	Ref.	Description	Qty.	Part No.
1	Combustion chamber	1	7602	-	Flue guard	1	7274
48	Receiver unit holder	1	7537	-	Flue seal foam	1	7186R
49	Receiver cover	1	7539	-	Dress guard	1	R1776
53	Flue spigot assembly	1	7174	-	Fire mounting bracket	1	7287
54	Fan partition lower panel	1	7202	-	Log set c/w granules	1	7044
55	Fan dividing panel bracket	1	7220	-	Granule pack	1	2544
59	Fan partition panel	1	7207	-	Flexitube replacement kit (fires manufactured BEFORE 21/02/04)	1	4988
60	Fan guide top	1	7601	-	Flexitube 3/8 x 8 CW 3/8-18 nuts AFTER 21/02/04)	1	7835
74	Clip thermistor	2	7554	-	Zero clearance box	1	ACC1783
75	PCB mounting bracket	1	7596	-	Hinge	1	7216
81	Rear panel	1	10903				
82	Rear top panel	1	7197				
83	Rear side panel	1	7198				
88	Bracket thermal fuse	1	7563				
89	Thermistor bracket rear	1	7621				
91	Louvre gold	7	7029				
92	Louvre rod	1	7198				
100	Air top guide	1	7227				
101	Front trim	1	7228				
135	Cable cover	2	7598				
136	Glass assembly (glass + seal tape)	1	4996				
-	Glass seal replacement tape kit	1	R7010				
140	Rear side panel RH	1	7199				
168	Fan discharge guide	1	7221				
173	Fan discharge shroud	1	7222				
184	Flue spigot guide LH	1	7241L				
185	Flue spigot guide RH	1	7241R				
187	Fan dividing panel MK2	1	7999				
188	Brand badge silver	1	5327S				
-	Louvre bracket top painted (goes at the top of the combustion chamber to hold the top louvres in place at the sides)	1	7217				

# Timberflame Radius ETR (IB35ETR) gas fireplace

This diagram is provided to assist you to identify parts if replacement is necessary. Contact your place of purchase or the manufacturer to enquire about parts, availability and/or service.

## Radius ETR fan assembly

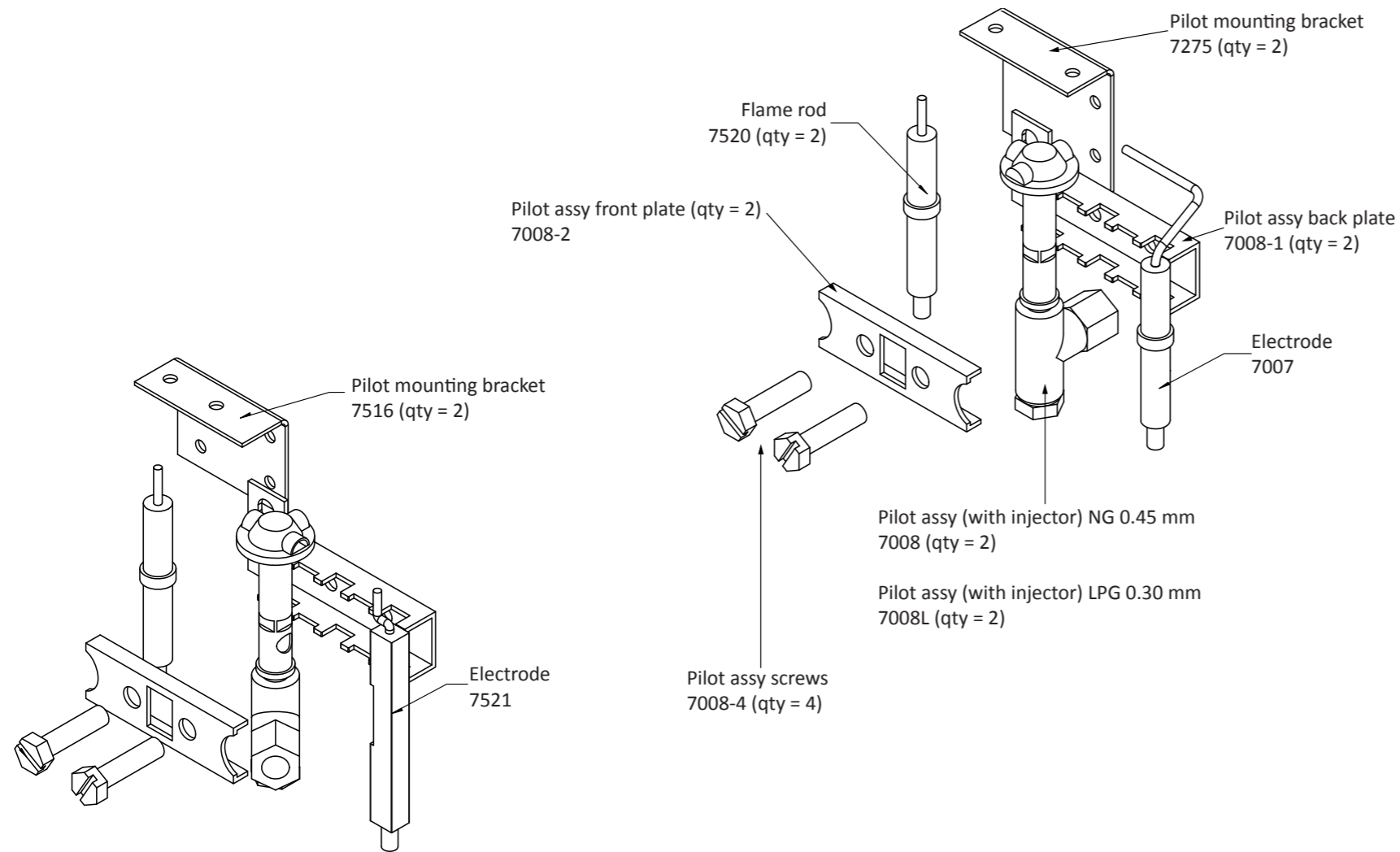


Item not shown in exploded diagram		
Description	Qty.	Part No.
Fan kit 10100X1	1	R1903

# Timberflame Radius ETR (IB35ETR) gas fireplace

This diagram is provided to assist you to identify parts if replacement is necessary. Contact your place of purchase or the manufacturer to enquire about parts, availability and/or service.

## Radius ETR pilot assembly



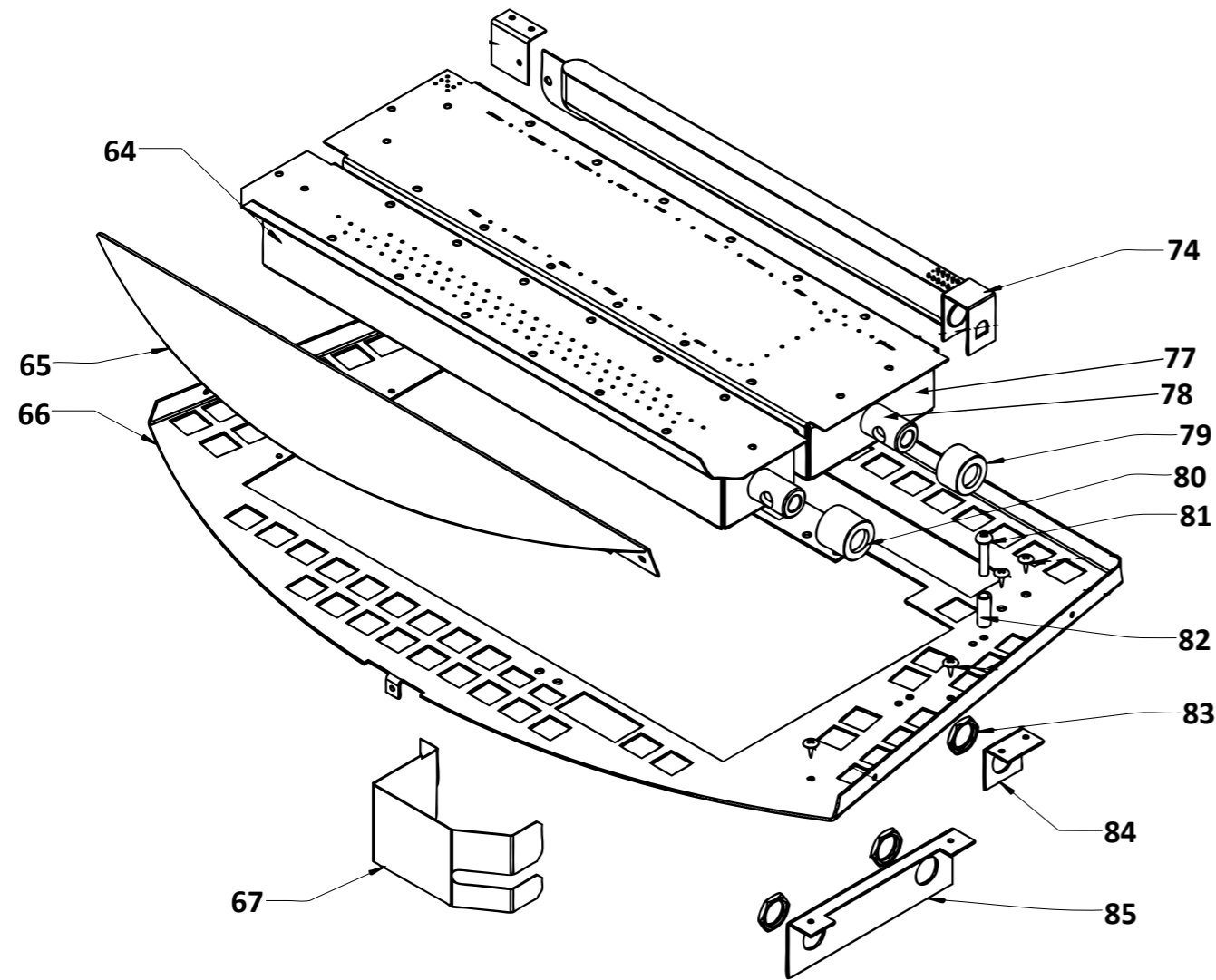
Items not shown in exploded diagram		
Description	Qty.	Part No.
Injector pilot LPG 0.30 mm	1	7009
Injector pilot NG 0.45 mm	1	9600
Flame rod harness (was 10307, reverse compatible for all models so no serial number transition is required)	1	10962
Test harness ETR (not a spare but used to test flame rod current)	1	9900



# Timberflame Radius ETR (IB35ETR) gas fireplace

This diagram is provided to assist you to identify parts if replacement is necessary. Contact your place of purchase or the manufacturer to enquire about parts, availability and/or service.

## Radius ETR burners



Ref.	Description	Qty.	Part No.
64	Front burner	1	7040
65	Front diverter panel	1	7004
66	Burner support	1	7473
67	Front shield	1	7518-1
74	Rear burner	1	6384
77	Main burner LPG	1	4971
77	Main burner NG	1	4970
78	Venturi	2	7038-3
79	Aeration sleeve short - NG only	1	7258
80	Aeration sleeve long - NG only	1	7293
81	Screw	2	9115
82	Log locating sleeve	2	7240
83	Lock nut	3	5070
84	Injector block bracket rear	1	7791
85	Injector block bracket front MK11	1	7950
-	Injector block a+b	3	7952
-	Burner bracket	1	7276