

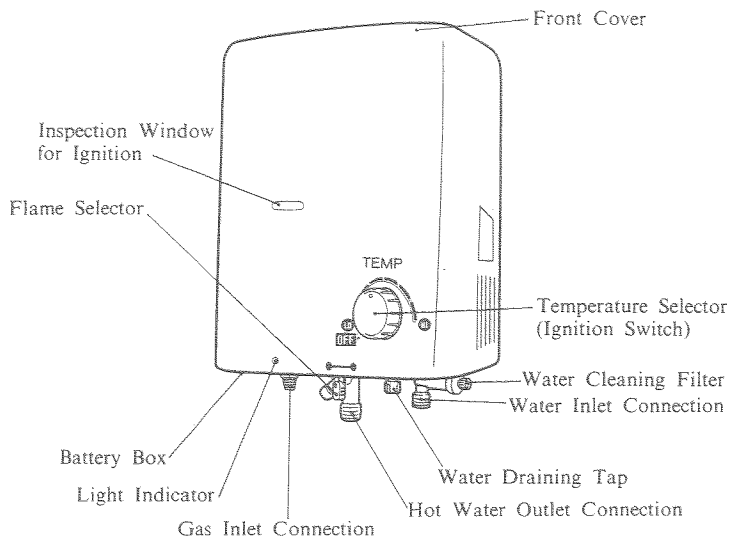
# Rinnai



## FULL AUTOMATIC GAS WATER HEATER OPERATING INSTRUCTIONS

MODEL REU-55FT/55FTL

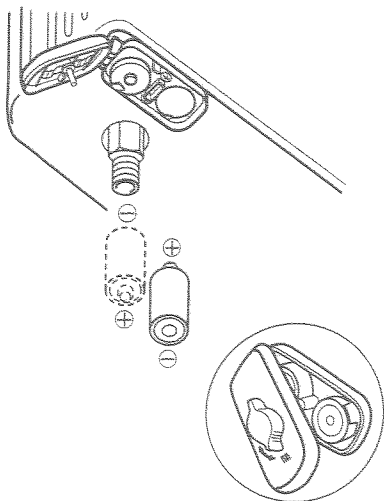
### 1. NAMES OF PARTS



### 2. HOW TO USE

#### 1. PREPARATION BEFORE USE

1. Fitting the battery:  
Fit the battery (1.5V, 2pcs) firmly in the battery box located at the left, bottom of the heater.
2. Make sure the water comes out from the hot water outlet.  
Turn off the gas supply first, and then supply water to the appliance by turning on the water inlet. Confirm the water comes out when the hot water tap is turned on. Then, turn off the hot water tap.
3. Turn on the gas supply.



### 2. OPERATION

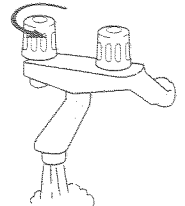
#### 1. Ignition & Hot Water Supply

The ignition is automatic by spark generator.

Turn the Temperature Selector to adjust suitable temperature and when the hot water tap is turned on the appliance will operate automatically. No pilot flame is used thus saving on gas consumption.

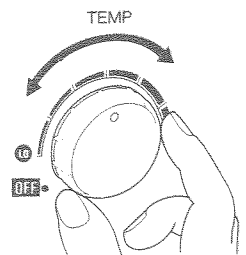
- Notes: \*
- \* Select suitable temperature before open the hot water tap.
  - \* Make sure to check the ignition flamed.
  - \* Light Indicator will flash when battery runs out.

\* If the water supply pressure becomes too low, the gas will not ignite on the burner as there is the safety device for preventing the heat exchanger from overheating.



#### 2. Temperature Control

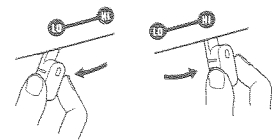
The water temperature can be adjusted by turning the temperature selector to a suitable position between "HI" and "LO"



#### 3. Flame Adjustment

The maximum gas flow can be obtained when the flame selector is set at "HI" position. The gas flow will be cut to half when the flame selector is set at "LO" position.

In summer or when the inlet water temperature is high, use the "LO" position.



#### 4. Hot Water Stop

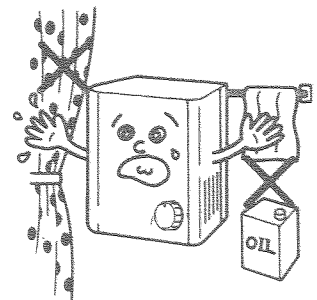
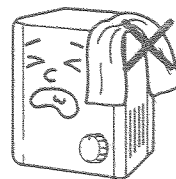
Hot water supply will be stopped when the hot water tap is turned off. Then the flame of main burner will be extinguished.

#### 5. Extinguishing

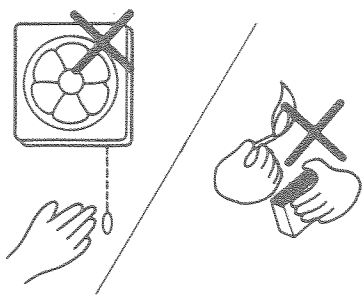
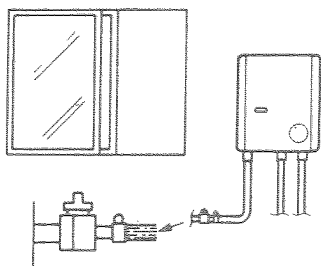
After use, turn Temperature Selector to be "OFF" position.

### 3. SPECIAL PRECAUTIONS

1. Do not use any gas other than the type specified on the label attached to the appliance.
2. Use it in a well-ventilated room but not facing against any draught.
3. Avoid putting any inflammable materials such as paper or clothes around the appliance.



4. While in use, do not go out or go to bed. Be sure to turn off the ignition switch and the gas supply after use. When going to bed or going out, be doubly sure that they are turned off.
5. Do not use a vinyl hose. It is able to be softened by heat. Use a fiber reinforced rubber hose or a metal braided flexible connector.
6. Do not use a worn-out rubber tubing, as it may be cracked and is not sufficiently elastic at both ends. Such a tubing is able to cause gas leakage.
7. If a gas leak is found, turn off the gas supply, open all the windows, and call your dealer to repair it. Refrain from turning electric switches on or off, lighting match, and using a lighter on any other equipment which could ignite the gas.

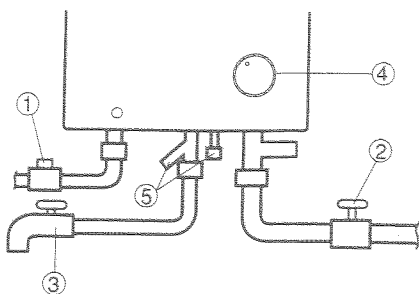


#### 4. ANTI-FREEZING DEVICE

This device will drain the water remaining inside the appliance and prevent the damage caused by freezing of the water.

##### How to Drain the Water

1. Turn off the gas inlet ①;
2. Turn off the water inlet ②;
3. Turn on the hot water outlet ③ fully;
4. Set the temperature selector ④ to "OFF";
5. The water will be drained from the appliance by releasing the water draining tap ⑤;



##### After the water is drained

Leave the hot water outlet ③ open and the water draining tap ⑤ released until the appliance is to be used again.

##### To Use the Appliance again

Before re-using the appliance, turn off the water draining tap ⑤ and turn on the water inlet ②. Confirm that the water comes out from the hot water outlet ③ and close it ③. Then, repeat the ignition procedure.

## 5. HANDLING WHEN SAFETY DEVICES WORK

### 1. Flame Failure Safety Device

The safety device will shut off the gas supply automatically when the flame is extinguished by wind or any other cause.

### 2. Incomplete Combustion Prevention Safety Device

Incomplete combustion can be caused by lack of oxygen if the appliance is used for a long period of time in an air tight room or the fins of the heat exchanger become clogged.

The incomplete combustion prevention safety device will shut off the gas supply automatically before incomplete combustion happens.

The ignition switch should be turned off immediately after you find out the incomplete combustion prevention safety device is functioned. Ventilate the room and repeat the ignition procedure.

### 3. Extra Safety Timer Device

Even if the water heater was forgotten to turn off the flame, it will automatically turn off after approx. 15-20 min. use continuously for extra safety function. In case you want to enjoy the shower again, please turn off the hot water tap and re-open again.

## 6. INSTALLATION

When this unit should be installed by Authorized person.

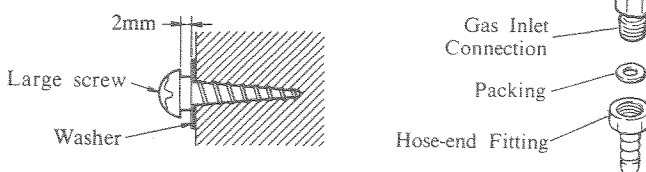
\* Do not fix in close flammable materials.

\* The height of installation shall be installed around 1.6-1.8 meter from ground due to easy checking of combustion flame.

### 1. The following parts are included:

Special large screw	1	Battery (1.5V)	2
Large screw	2	Hose-end Fitting	1
Washer	3	Packing	1

2. Attach the special large screw with washer after the location of fixing the appliance is marked. Hang the appliance and fix the lower rear panel to the wall with two large screws.



3. After installation, connect the gas supply, water inlet, and hot water outlet correctly. Fix a fiber reinforced rubber hose or a metal braided flexible connector at installation.

In case of using a rubber hose, use hose end and packing (Accessories). And check for gas escapes.

## 7. SPECIFICATION

Model		REU-55FT	REU-55FTL
Type of Gas		L.P. Gas	
Dimensions H×W×D (mm)		370×290×132	
Minimum Water Pressure (kg/cm <sup>2</sup> )		0.35	0.25
Connection	Gas Inlet	R 1/2 (15A)	
	Water Inlet	R 1/2 (15A)	
	Hot Water Outlet	R 1/2 (15A)	
Safety Device		1. Flame Failure Safety Device 2. Incomplete Combustion Prevention Safety Device 3. Extra Safety Timer Device	
Gas Consumption (kW)	Max.	11.0	7.3
	Min.	5.8	3.8
Weight (kg)		6.2	
Ignition		Automatic Spark Ignition	
Accessories		Battery, Screws Hose-end Fitting, Packing	

MANUFACTURED BY:

**Rinnai CORPORATION**

2-26 Fukuzumi Nakagawa Nagoya JAPAN

2001.11 U231-961×01