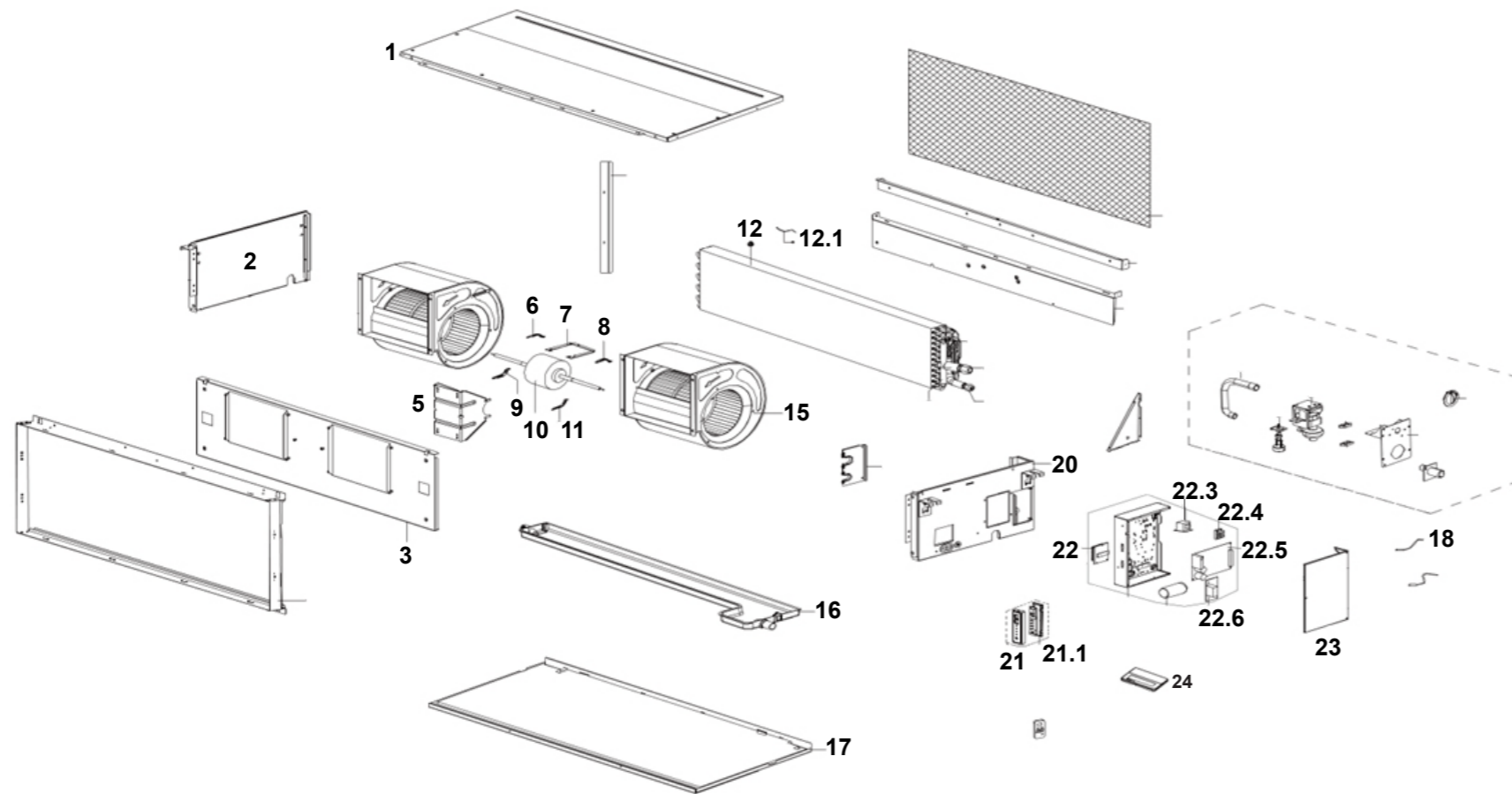


Pro Series R32 Ducted 11 kW indoor unit (DINLR11B1)

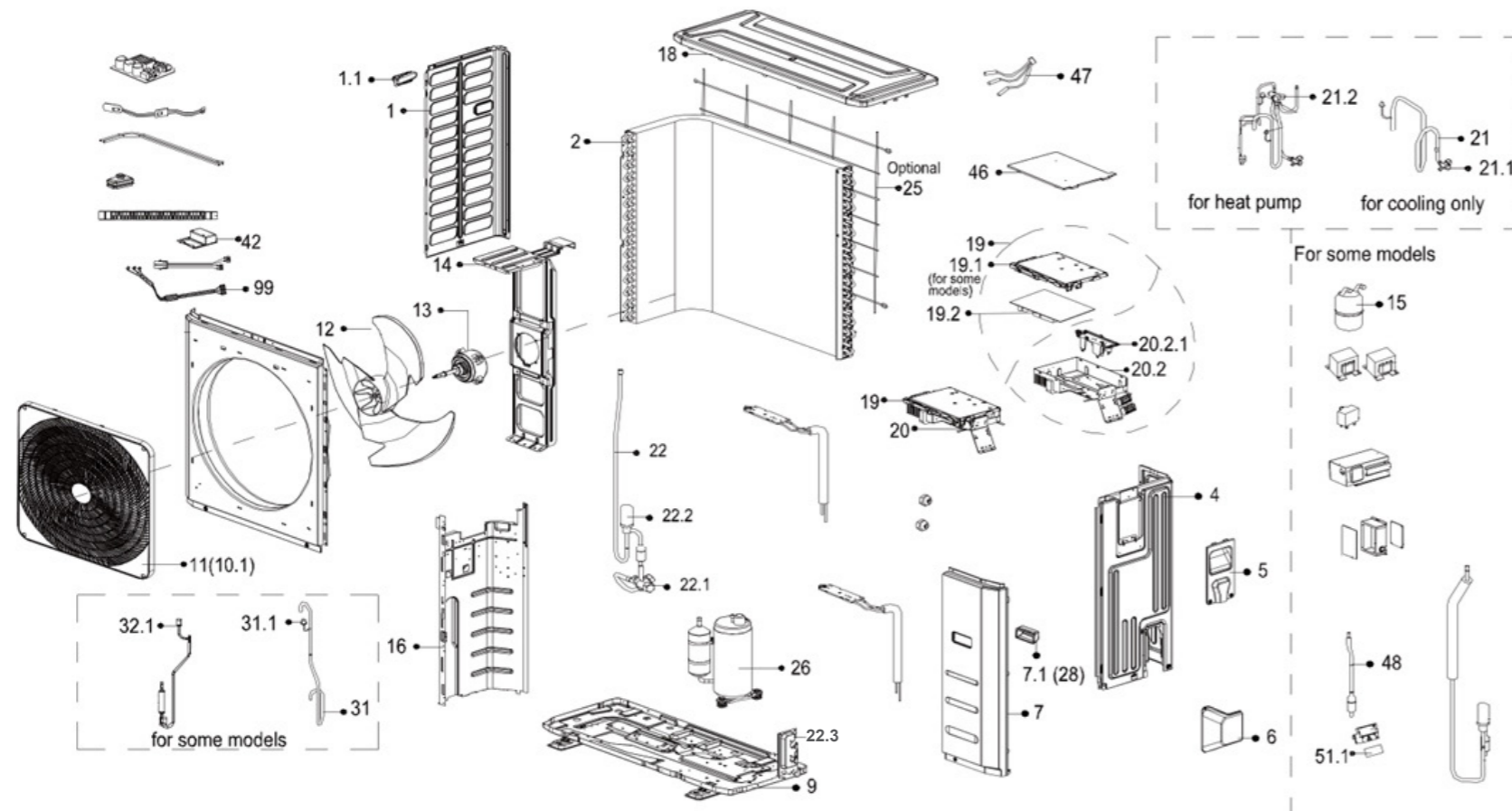
This diagram is provided to assist you to identify parts if replacement is necessary. Contact your place of purchase or the manufacturer to enquire about parts, availability and/or service.



Ref.	Description	Part No.
1	Top cover assembly	
2	Left side plate assembly of cabinet	
3	Front clapboard assembly	
5	Fan motor support	
6	Fan motor cover	
7	Fan motor fixing board	
8	Fan motor cover	
9	Fan motor cover	
10	Brushless DC motor	14199
11	Fan motor cover	
12	Evaporator assembly	
12.1	Pipe temperature sensor	84000019
15	Fan assembly	
16	Water collector assembly	
17	Chassis assembly	
18	Room temperature sensor	84000025
20	Right clapboard assembly	
21	Duct display board sub-assembly	84000085
21.1	Duct display board sub-assembly	
22	Duct electronic control box sub-assembly	
22.3	Reactor	
22.4	Terminal	
22.5	Duct main control board sub-assembly	
22.6	Inverter module sub-assembly	
23	Cover of electronic control box	
24	Wired controller	

Pro Series R32 Ducted 11 kW outdoor unit (DONSR11B1)

This diagram is provided to assist you to identify parts if replacement is necessary. Contact your place of purchase or the manufacturer to enquire about parts, availability and/or service.



Ref.	Description	Part No.
1	Left side plate assembly of cabinet	
1.1	Small handle	
2	Condenser assembly	
4	Rear right clapboard assembly	
5	Big handle assembly	
6	Water collector	
7	Front right clapboard assembly	
7.1	Handle	
9	Chassis assembly	
11	Air outlet grille	

Ref.	Description	Part No.
12	Axial flow fan	
13	Brushless DC motor	14149
14	Fan motor support sub-assembly	
15	Liquid storage tank	
16	Partition board assembly	
18	Top cover assembly	
19	Electronic control box sub-assembly	
19.1	Electronic control box cover	
19.2	Outdoor main control board sub-assembly	
20	Terminal board sub-assembly	14205
20.1	Terminal	
20.2	Electronic installing box sub-assembly	
21	4-way valve assembly	
21.1	Gas valve	
21.2	4-way valve	
22	Liquid valve assembly	
22.1	Liquid valve	
22.3	Valve plate	
25	Rear net	
26	DC inverter rotary compressor	
31	Suction pipe assembly	
31.1	Pressure switch	
32.1	Pressure switch	
42	DR module box sub-assembly	
46	Electronic control box cover	
47	Combination sensor	14129
48	Throttle valve sub-assembly	
51	Key board box sub-assembly (not shown)	
51.1	Key board sub-assembly	
99	Compressor wire sub-assembly	