

Linear 800 FlameTech log set installation

Experience has shown that the majority of performance problems are caused by burn media being installed incorrectly. Please take the time to read and follow these instructions as malfunctioning due to incorrect burn media placement is not covered by warranty.

We also have a seven minute burn media installation video, 'Linear 800 - FlameTech Log Set Installation', on the Rinnai NZ YouTube channel:

<https://www.youtube.com/watch?v=hGaMsnQSnlw&t=9s>.

The Linear **MUST NEVER** be used with other burn media or burn media that is damaged. The Linear burn media sets are different and cannot be interchanged.

Correct placement

It is important to place the burn media in the correct position. Incorrect placement can create carbon build-up and affect performance.

Single-sided/double-sided

When installing the burn media you will **ALWAYS** be working on the side where the pilot assembly is to the back of the firebox.

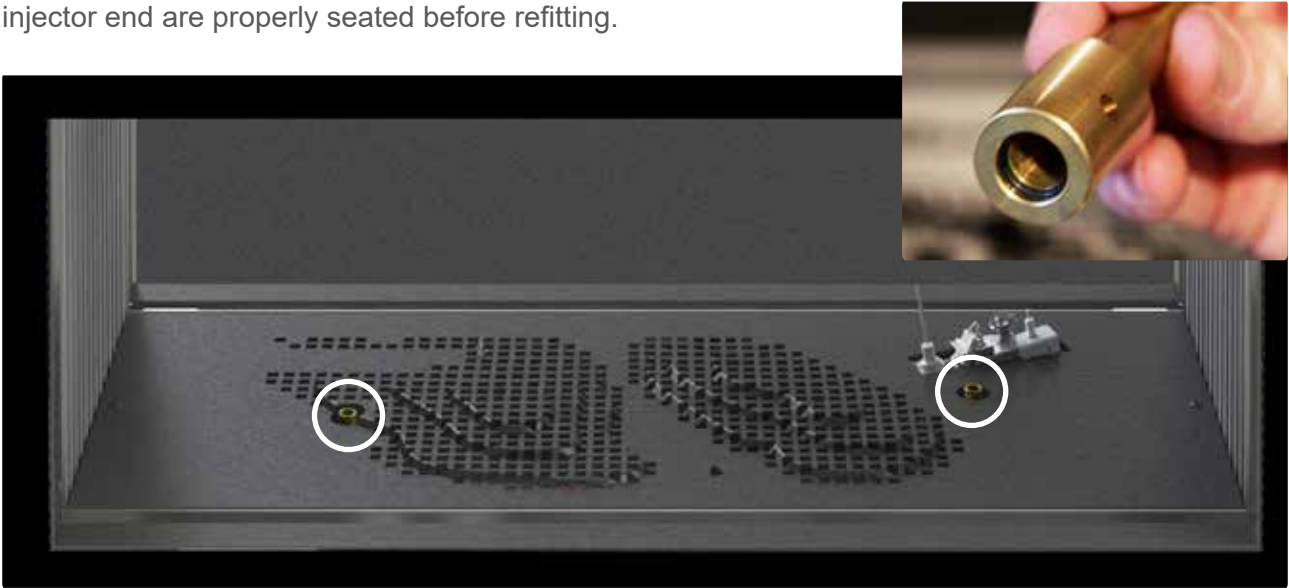
Linear 800 FlameTech log set kit contents



Before starting the installation, carefully unpack the entire burn media set. Inspect each part for damage, and lay them out as shown above, making sure that everything required has been supplied.

Base panel

Make sure the base panel is properly fixed in place and that the brass aeration sleeves are correctly fitted over the injectors with the top of the sleeve slightly above the fire base. If the aeration sleeves feel loose or you have removed them at some point, check the o-rings in the injector end are properly seated before refitting.



Centre log

Take the centre log and fit it into the valley in the middle of the base panel. There is a slot in the front of the panel that lines up with the notch in the end of the log.



Glass

Place a layer of glass over the holes in the base panel. Don't pour the glass out of the bag as there will be dust that has settled that will make the installation look messy when finished.

Avoid covering the area beyond the holes. You should only use about eighty percent of the glass for this step, refer image on next page.

If the layer of the glass is too thick the effectiveness of the lighting from below will be reduced.



Back left hand log

Fit the second log into the back left corner. The location of this log is less critical as there is a hollow in the base panel for guidance. You might need to move some of the glass to get the log to sit flat.



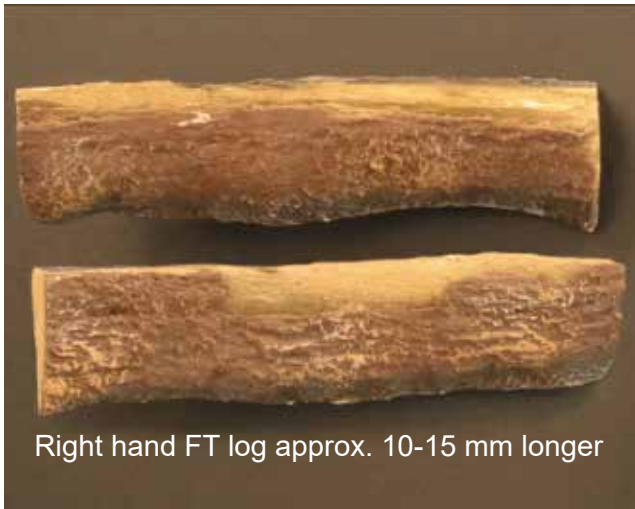
FlameTech logs

Identify the left and right hand FlameTech logs. The left log is slightly shorter than the right. Carefully inspect both logs. Check that the block and the copper sleeve on the base of the log are firmly attached. Inspect the channel where the wire wool wraps around the burner, look for chips or cracks in the channel.

Look for any large cracks in the burner. The gas flows through the burner itself and anything other than a small surface fissure could be a sign of damage. If the crack is big enough to see the inside edge of the crack the log should not be installed.

The wire wool should sit inside the channel around the burner with only the occasional strand of wool sticking out, and not so far back that you can see the sides of the channel.

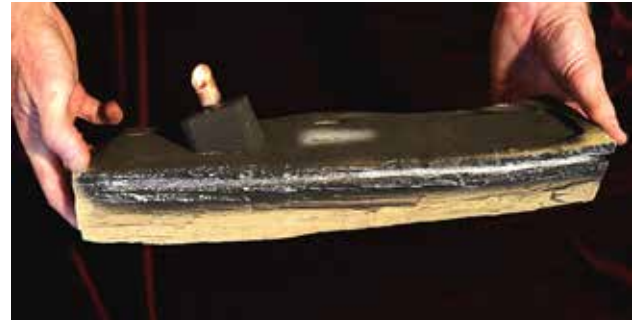
These logs have all been tested before leaving the factory but if the wire wool is not correctly placed, you might need to adjust it later.



Right hand FT log approx. 10-15 mm longer



Inspect the wire wool channel



Position right hand FlameTech log

Place the right hand log in position. Fit the copper sleeve on the base of the burner over the aeration sleeve. The outer, or right hand end of the log should sit on the base panel with the other end resting on top of the centre log. There should be a gap between the base panel and the block on the underside of the burner.



When correctly installed the log should sit evenly on the centre log, with a gap of around 5 mm between the log and the long flame rod to the left of the pilot.



Snip off any strands of wire wool sticking out around the flame rod. These are the most common source of installation problems. These strands can short the flame rod out and cause flame failure errors or pre-ignition flame rod failures.



Position left hand FlameTech log

Place the left hand log in position. The outer edge should sit on the base panel and the other end resting on the centre log. There should be a gap between the base panel and the burner block.

When correctly positioned, the gap between the two FlameTech burners will be about 5 mm with both burners sitting evenly on the centre log.



Start the fire

Start the fire and check for complete ignition around both burners. If the burners don't cross light you might need to adjust the gap between them.

If the fire starts and then goes out within a few seconds, it will almost certainly be a strand of wire wool touching the main burner flame rod.

Make sure to run the burners on high and low flame settings to ensure the flame rod is working correctly.

If the flames are a bit thin, with no glow around the wire wool, it could be the wire wool is jammed too tightly in the channel. Carefully tweeze the wool out of the channel in the affected areas.

If the flames look like a row of candles with no flames burning around the rim of the log, it could be that the wire wool is sitting too far out of the channel. Carefully push the wool back into the channel where necessary.

It might be necessary to adjust the position of the burners or, in some cases, the flame rod to get reliable operation.

Take care if adjusting the flame rod, the rod does not need to be in the middle of the flame to detect its presence, it works best on the edge of the flame.

The burners may work differently with the glass on, so briefly fit the glass and double check the operation. Once you are happy with the operation of the burners, it is time to dress the rest of the fire bed.



Place three remaining logs

Place the three remaining logs as shown.

When fitting the back pilot log, take care not to dislodge the FlameTech burner or to put the log where it could compromise the operation of the pilot.

If you can, connect to the Wi-Fi unit. You can use the Rinnai app to turn the LED lights under the burner bed on without the fire burning. This is helpful when finishing the media bed.

Place any remaining glass pieces around the logs and try to cover any parts where you can see directly through the base panel. This includes the log location slot.

Place the large black granules over the top of the glass. The granules are purely decorative and can be placed anywhere on the base panel as long as they don't block the pilot area.

If installing a double-sided fire, check the media bed from both sides to make sure there are no places where you can directly see the lights below the bed.

Sprinkle the vermiculite over and around the media bed to get the desired look.

Refit the glass and operate the fire for at least ten minutes to make sure the burner is operating with nice even flames on high and low burner settings. The installation of the media is now complete.



Rinnai Australia Pty Ltd

100 Atlantic Drive, Keysborough, Victoria 3173
P.O. Box 460, Braeside, Victoria 3195
Tel: +613 92716625
Fax: +613 92716622

National Help Line

Tel: 1300 555 545* Fax: 1300 555 655*

** Cost of a local call higher from mobile or public phones*

www.rinnai.com.au
enquiry@rinnai.co.au

Rinnai New Zealand Ltd

105 Pavilion Drive, Mangere, Auckland 2022
P.O. Box 53177, Auckland Airport, Auckland 2150
Tel: +64 9 257 3800
Fax: +64 9 257 3899

0800 Rinnai

0800 746 624

www.rinnai.co.nz
info@rinnai.co.nz