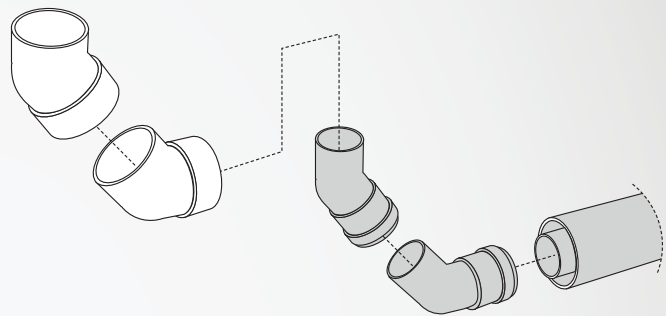
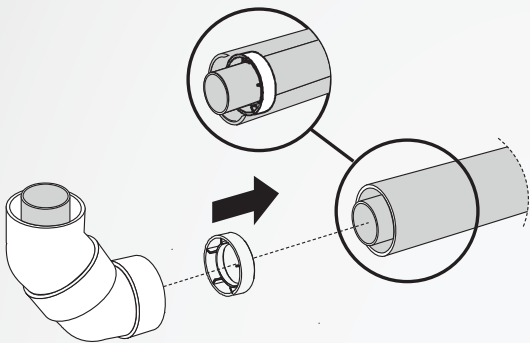


The ESBEND kit comes with two plastic spacers. These are fitted inside the component that joins the female end of the ESBEND. These spacers **MUST BE** fitted to ensure correct alignment of the flue components, and to prevent the plastic flue components from overheating.



The white plastic centering spacer is always positioned inside the component that joins the female end of the ESBEND.

Lubricate the ESBEND inner pipe o-rings and fit to the inner pipe of the preceding component.

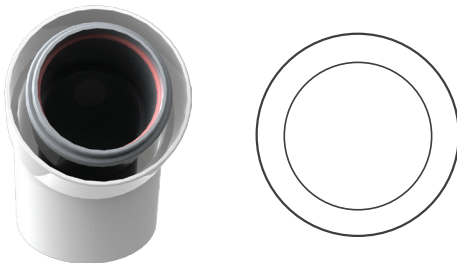
Secure the spacer with a small rivet or screw.

A spacer is not required when connecting the two bends in the ESBEND kit together.

When fitted correctly the inner and outer pipes of the ESBEND will be self centering.

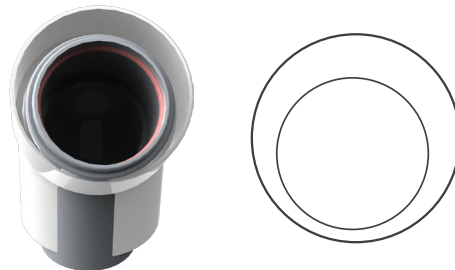
Correct ESBEND alignment

Inner and outer flue remain concentric when assembled.



Incorrect ESBEND alignment

Inner flue is almost touching the outer flue.



Cutting straight pipes to length to fit an ESBEND

When cutting straight flue components to fit an ESBEND it is important the cut ends are square and that the inner pipe protrudes exactly 12 mm from the outer pipe. The exact 12 mm measurement is required for the ESBEND to correctly align within the pipe.

ESBEND and pipe connections. Circled areas highlight sections that can overheat if incorrectly positioned.

